

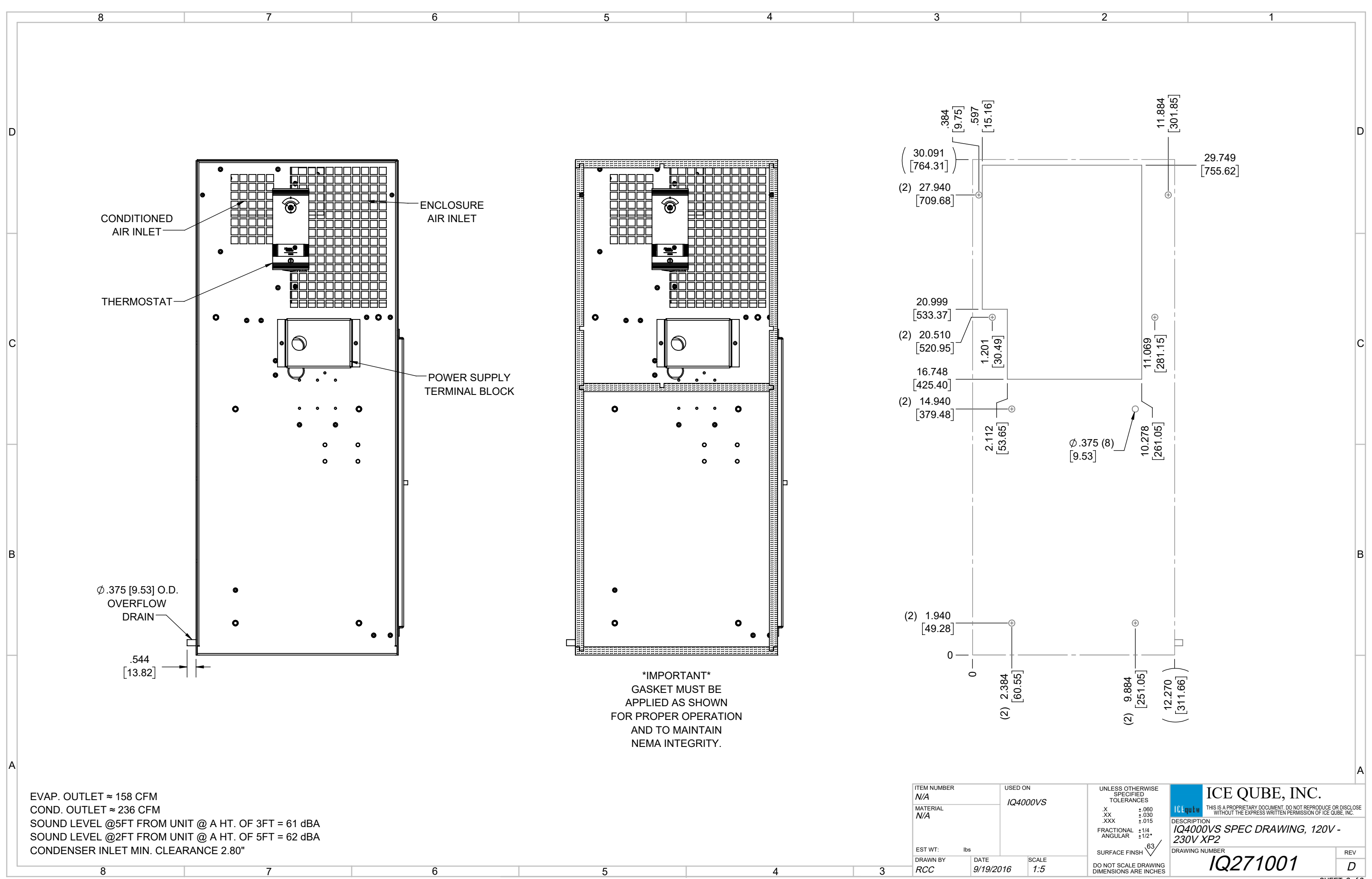
IQ4000VS
 COOLING CAPACITY: 4000 BTUH (1173W) @131°F (55°C)
 MAXIMUM AMPS: 8.7 (1044W) @120V 60HZ
 MAXIMUM AMPS: 4.5/5.0 (1035/1100W) @230/220V 60/50HZ
 MAXIMUM OPERATING TEMP: 131°F (55°C)
 MINIMUM OPERATING TEMP: -4°F (-20°C)
 DIMENSIONS: 30.09" (764MM) H X 12.27" (312MM) W X 8.34" (212MM) D
 WEIGHT: 80 LBS (36.4KG)

REV	REVISION	CHG	DATE	APP	DATE	CN #
D	CHANGED THERMOSTAT DIMENSIONS	NAT	2/17/2021			ECN-1434
C	ADDED CFM, dBA, AND CLEARANCE INFO	RCC	3/29/2018			1351
B	ADDED WATTAGE INFO	RCC	1/4/2018			
A	REDRAWN IN SW	RCC	9/19/2016			

ITEM NUMBER	N/A	USED ON	IQ4000VS
MATERIAL	N/A		
EST WT:	lbs		
DRAWN BY	RCC	DATE	9/19/2016
		SCALE	1:6

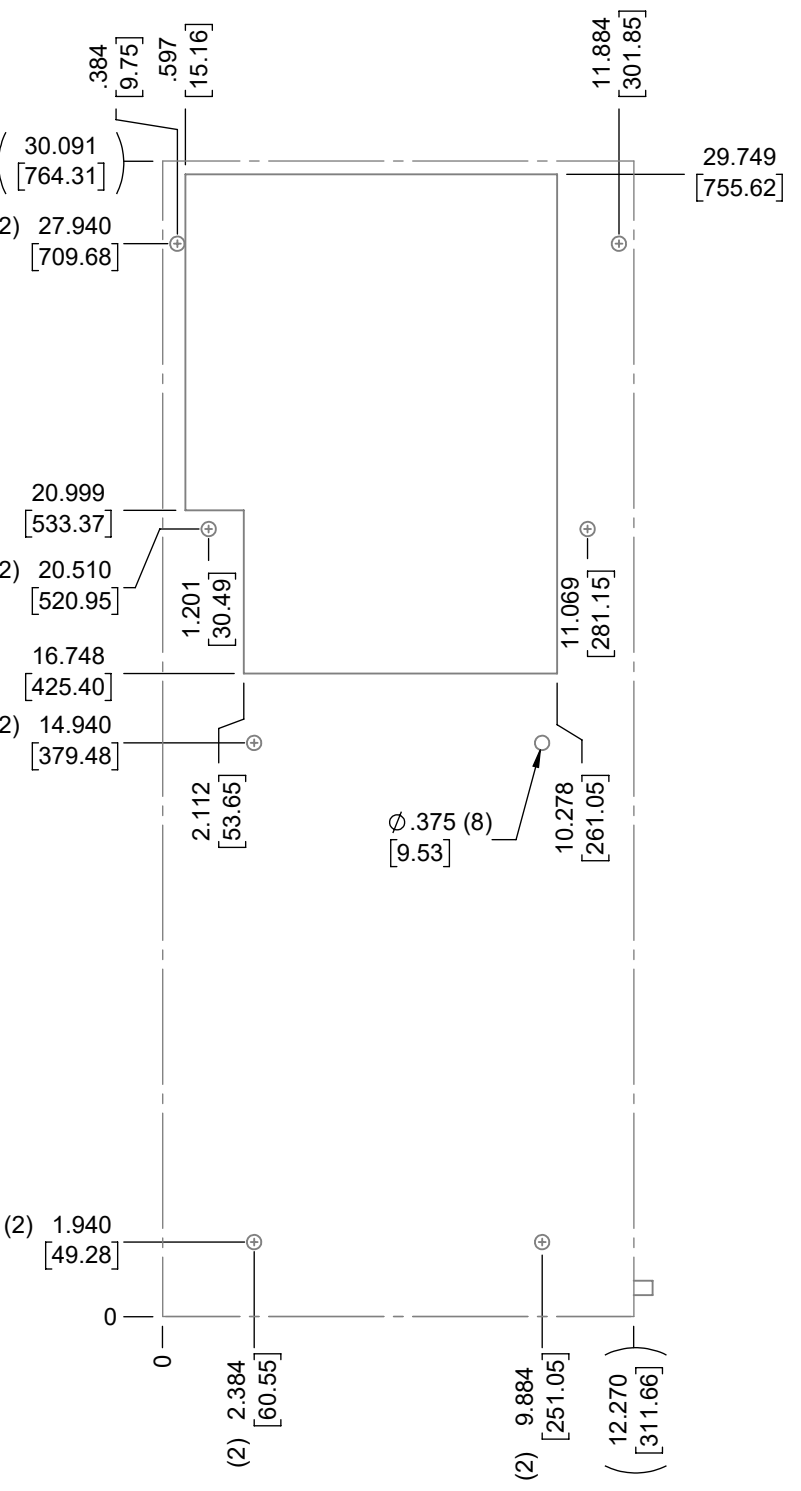
UNLESS OTHERWISE SPECIFIED TOLERANCES	
X	±.060
.XX	±.030
.XXX	±.015
FRACTIONAL	±1/16
ANGULAR	±1/2°
SURFACE FINISH	63
DO NOT SCALE DRAWING DIMENSIONS ARE INCHES	

ICE QUBE, INC.
THIS IS A PROPRIETARY DOCUMENT. DO NOT REPRODUCE OR DISCLOSE WITHOUT THE EXPRESS WRITTEN PERMISSION OF ICE QUBE, INC.
 DESCRIPTION
IQ4000VS SPEC DRAWING, 120V - 230V XP2
 DRAWING NUMBER
IQ271001



EVAP. OUTLET ≈ 158 CFM
 COND. OUTLET ≈ 236 CFM
 SOUND LEVEL @5FT FROM UNIT @ A HT. OF 3FT = 61 dBA
 SOUND LEVEL @2FT FROM UNIT @ A HT. OF 5FT = 62 dBA
 CONDENSER INLET MIN. CLEARANCE 2.80"

IMPORTANT
 GASKET MUST BE
 APPLIED AS SHOWN
 FOR PROPER OPERATION
 AND TO MAINTAIN
 NEMA INTEGRITY.



ITEM NUMBER N/A	USED ON IQ4000VS	UNLESS OTHERWISE SPECIFIED TOLERANCES X ±.060 .XX ±.030 .XXX ±.015	THIS IS A PROPRIETARY DOCUMENT. DO NOT REPRODUCE OR DISCLOSE WITHOUT THE EXPRESS WRITTEN PERMISSION OF ICE QUBE, INC.
MATERIAL N/A		FRACTIONAL ±1/4 ANGULAR ±1/2°	
EST. WT.: lbs	DATE 9/19/2016	SCALE 1:5	DESCRIPTION IQ4000VS SPEC DRAWING, 120V - 230V XP2 DRAWING NUMBER IQ271001
DRAWN BY RCC			SURFACE FINISH 63 DO NOT SCALE DRAWING DIMENSIONS ARE INCHES
			REV D