

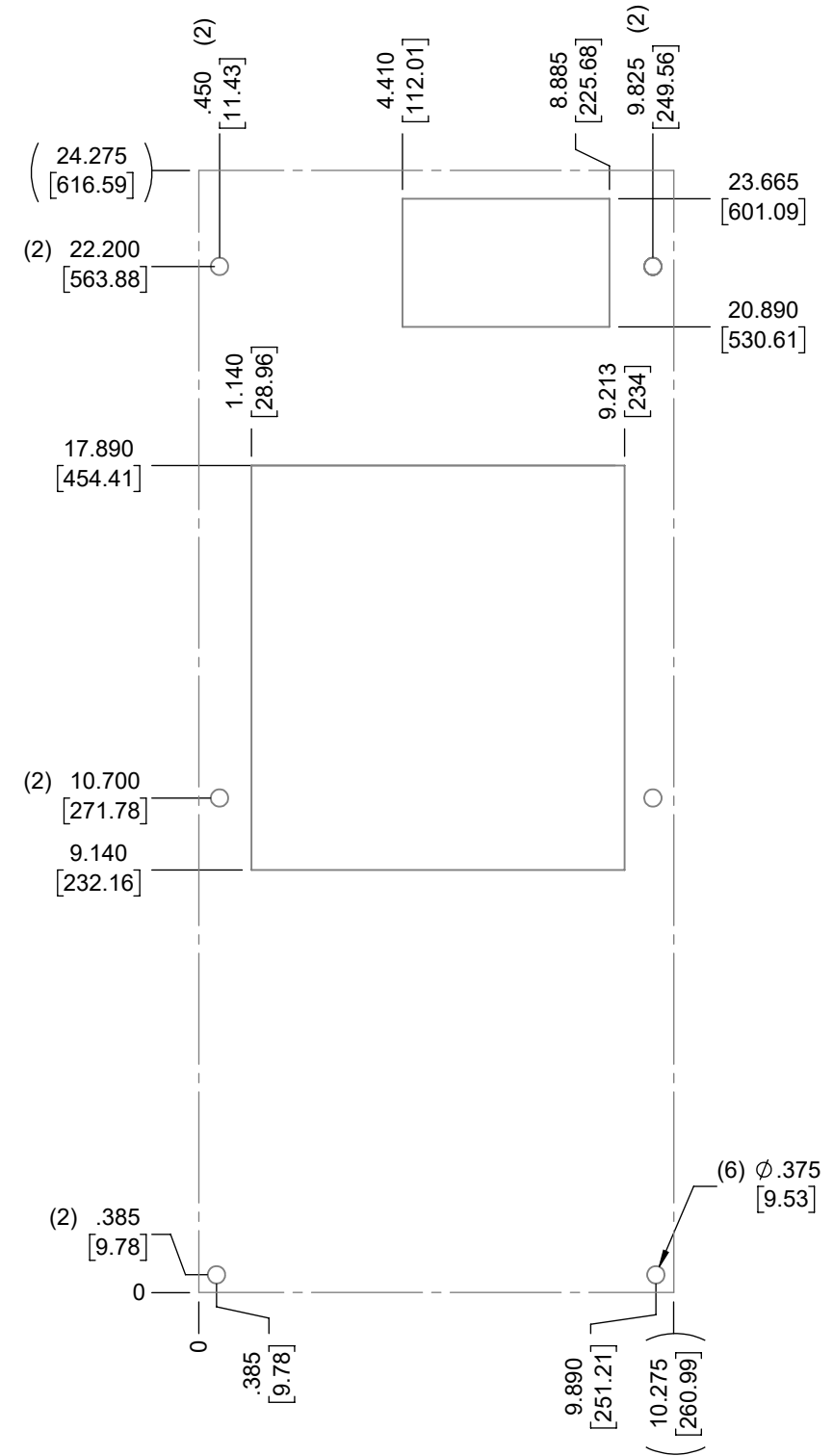
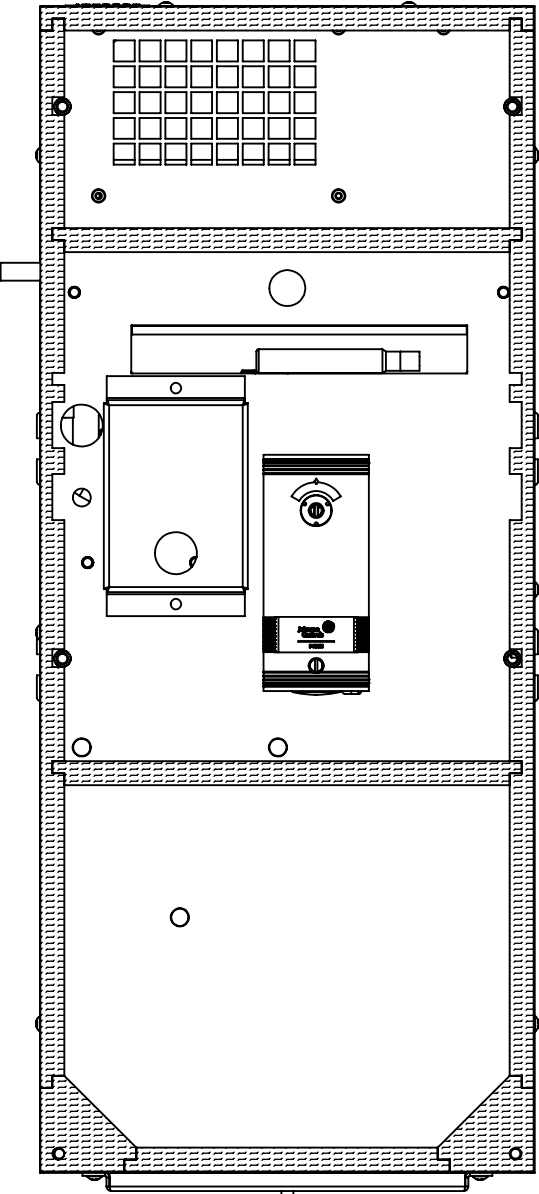
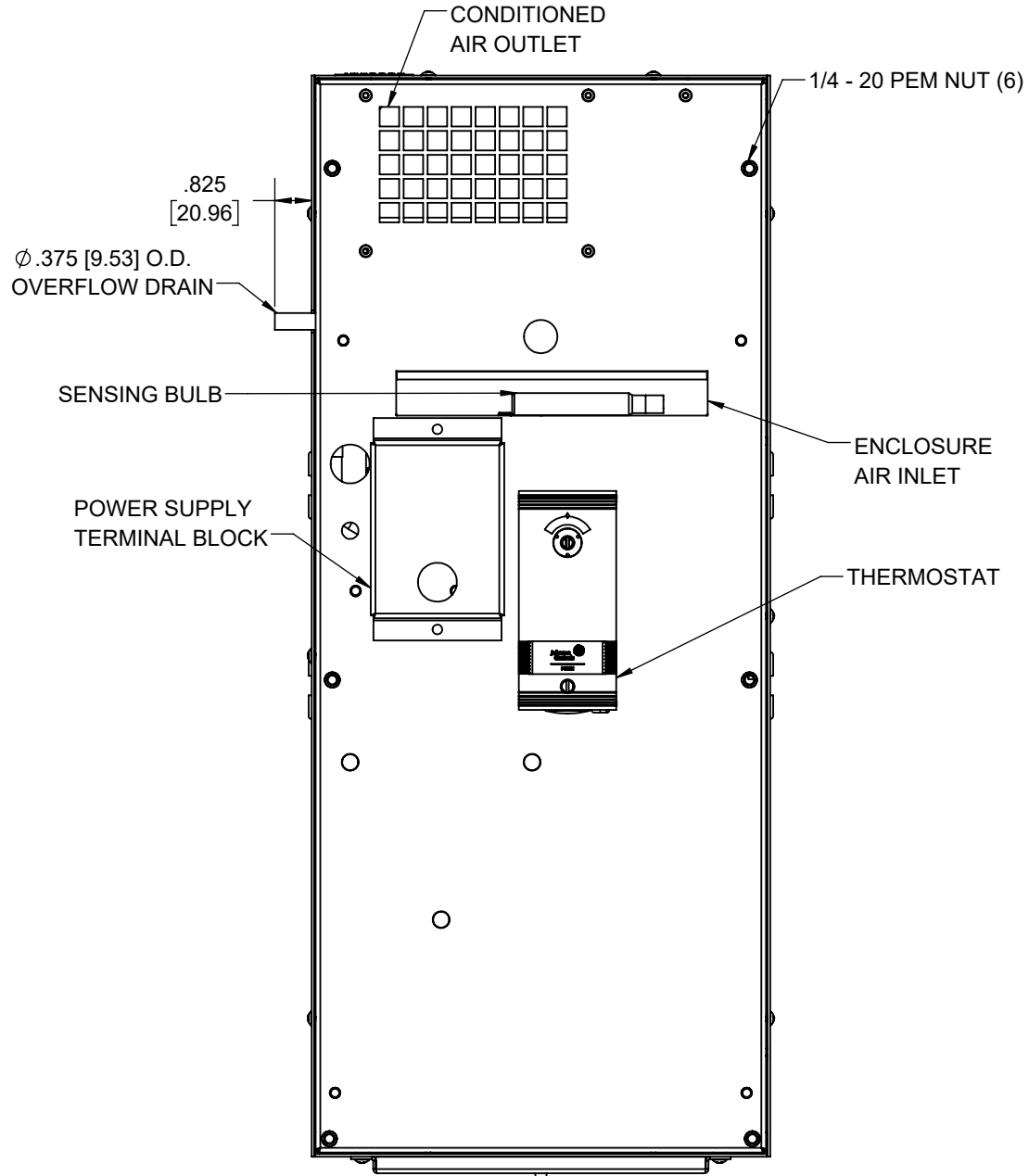
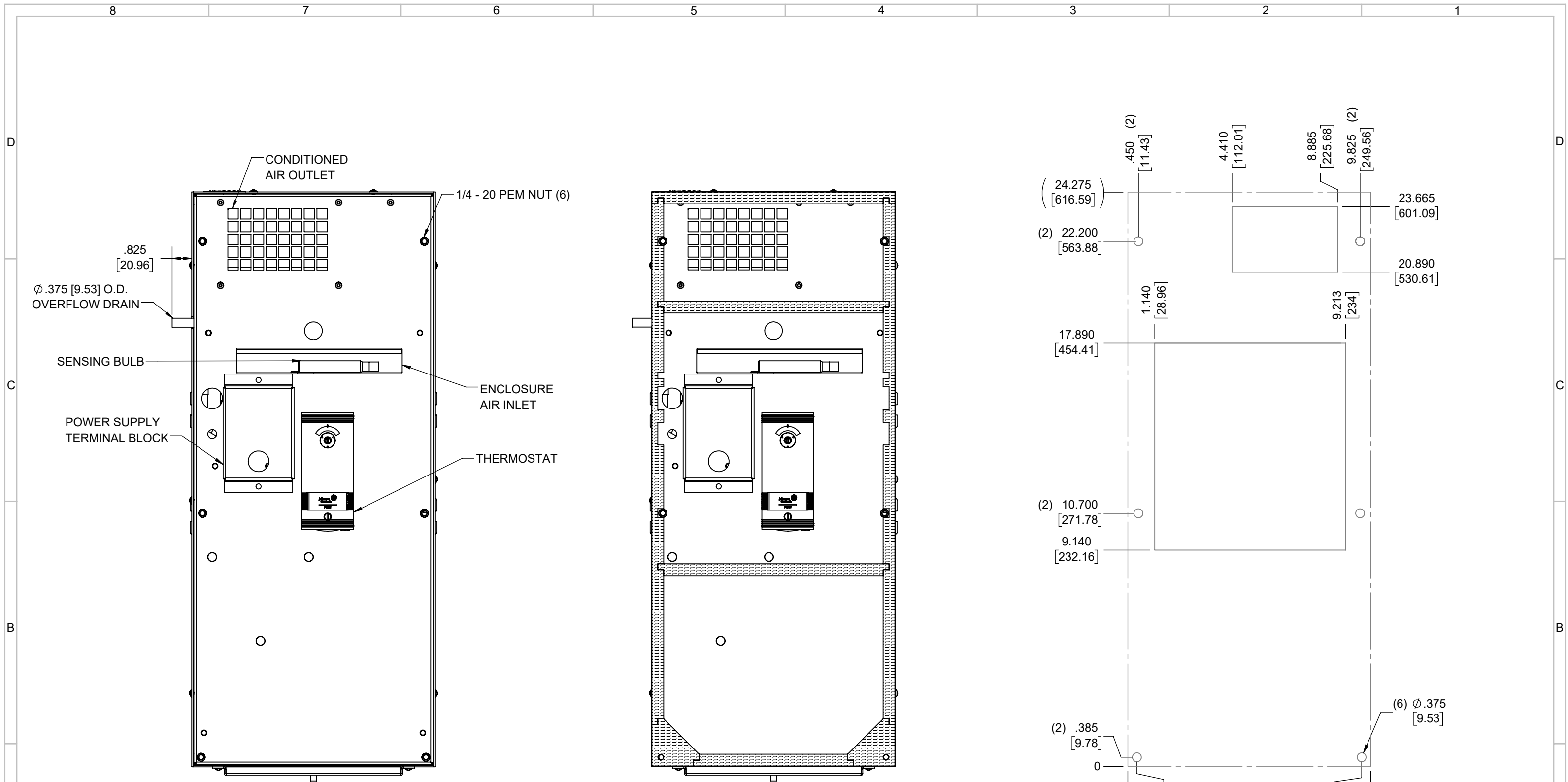
IQ2000TXS
 COOLING CAPACITY: 2000 BTUH (587W) @131°F (55°C)
 MAXIMUM AMPS: 4.7 (564W) @120V/60HZ
 MAXIMUM AMPS: 2.3 (529W) @230V/60HZ
 MAXIMUM OPERATING TEMP: 131°F (55°C)
 MINIMUM OPERATING TEMP: -4°F (-20°C)
 DIMENSIONS: 9.25" (235MM) H X 10.31" (262MM) W X 24.31" (617MM) D
 WEIGHT: 70 LBS (31.8KG)

REV	REVISION	CHG	DATE	APP	DATE	CN #
D	CHANGED THERMOSTAT DIMENSIONS	NAT	2/26/2021			ECN-1434
C	ADDED CFM, dBA, AND CLEARANCE INFO	RCC	3/28/2018			1351
B	ADDED WATTAGE INFO	RCC	1/2/2018			
A	REDRAWN IN SW	RCC	4/20/2017			

ITEM NUMBER	N/A	USED ON	IQ2000TXS
MATERIAL	N/A		
EST WT:	lbs		
DRAWN BY	RCC	DATE	4/20/2017
		SCALE	1:6

UNLESS OTHERWISE SPECIFIED TOLERANCES	
X	±.060
.XX	±.030
.XXX	±.015
FRACTIONAL	±1/16
ANGULAR	±1/2°
SURFACE FINISH	63
DO NOT SCALE DRAWING DIMENSIONS ARE INCHES	

ICE QUBE, INC.
THIS IS A PROPRIETARY DOCUMENT. DO NOT REPRODUCE OR DISCLOSE WITHOUT THE EXPRESS WRITTEN PERMISSION OF ICE QUBE, INC.
 DESCRIPTION
IQ2000TXS SPEC DRAWING XP2
 DRAWING NUMBER
IQ280703
 REV
D



IMPORTANT
 GASKET MUST BE APPLIED AS SHOWN FOR PROPER OPERATION AND TO MAINTAIN NEMA INTEGRITY.

EVAP. OUTLET ≈ 158 CFM
 COND. OUTLET ≈ 236 CFM
 SOUND LEVEL @5FT FROM UNIT @ A HT. OF 3FT = 51 dBA
 SOUND LEVEL @2FT FROM UNIT @ A HT. OF 5FT = 53 dBA
 CONDENSER INLET MIN. CLEARANCE 2.02"

ITEM NUMBER N/A	USED ON IQ2000TXS	UNLESS OTHERWISE SPECIFIED TOLERANCES X ±.060 .XX ±.030 .XXX ±.015 FRACTIONAL ±1/4 ANGULAR ±1/2°	<p>THIS IS A PROPRIETARY DOCUMENT. DO NOT REPRODUCE OR DISCLOSE WITHOUT THE EXPRESS WRITTEN PERMISSION OF ICE QUBE, INC.</p> <p>DESCRIPTION IQ2000TXS SPEC DRAWING XP2</p>
MATERIAL N/A		SURFACE FINISH 63	
EST WT: lbs	DATE 4/20/2017	SCALE 1:4	DRAWING NUMBER IQ280703
DRAWN BY RCC			REV D