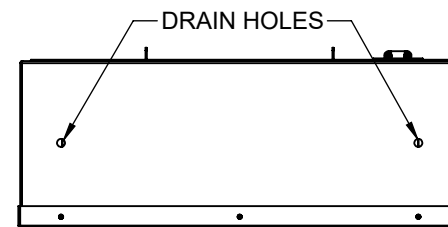
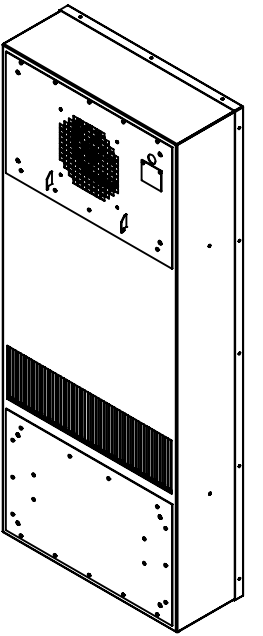
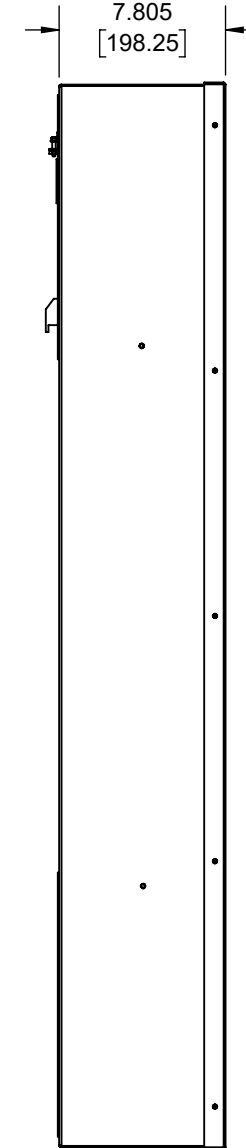
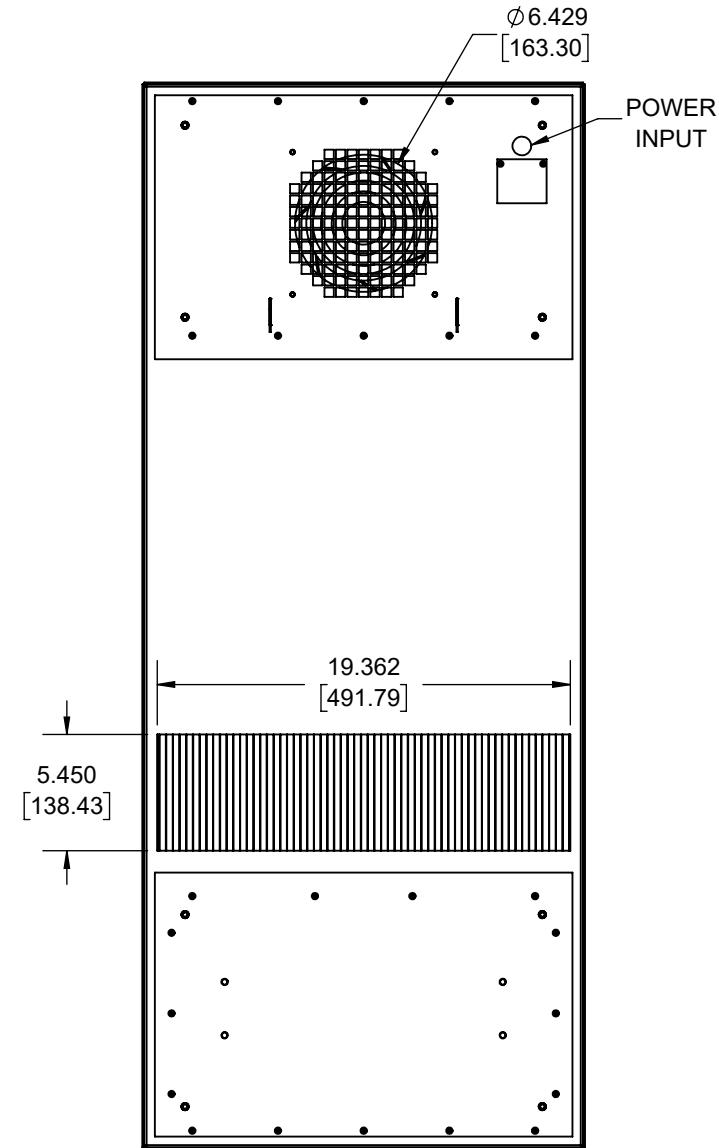
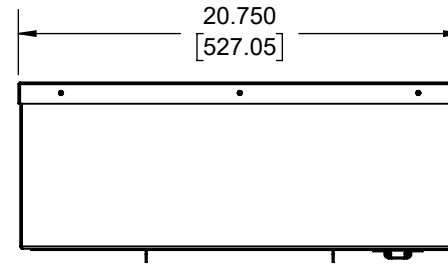
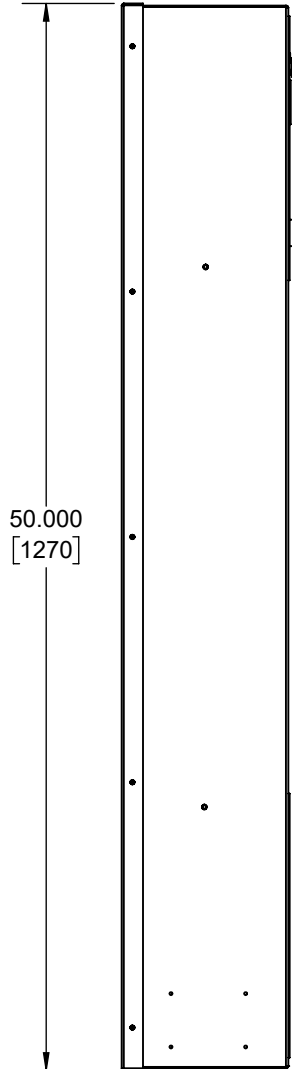
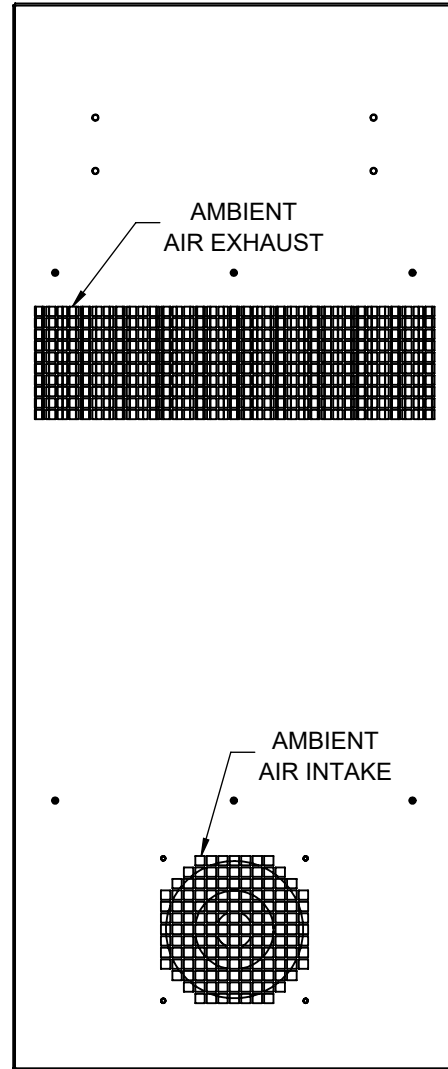
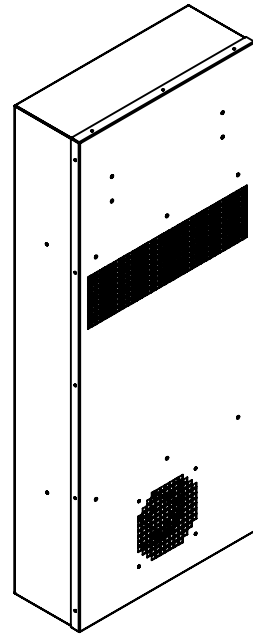


IQ1000HE-CF



IQ1000HE-CF

COOLING CAPACITY: 83 WATTS/°F
 MAXIMUM AMPS: 5.02A (602W) @ 120V/60HZ
 MAXIMUM AMPS: 1.52/1.67A (350/384W) @ 230V 60/50HZ
 MAXIMUM AMPS: 10.82A (260W) @ 24VDC
 MAXIMUM AMPS: 5.42A (260W) @ 48VDC
 MAXIMUM OPERATING TEMP: 176°F (80°C)
 DIMENSIONS: 50.00" (1270MM) H X 20.75" (527MM) W X 7.81" (198MM) D
 WEIGHT: 100 LBS (45.4KG)

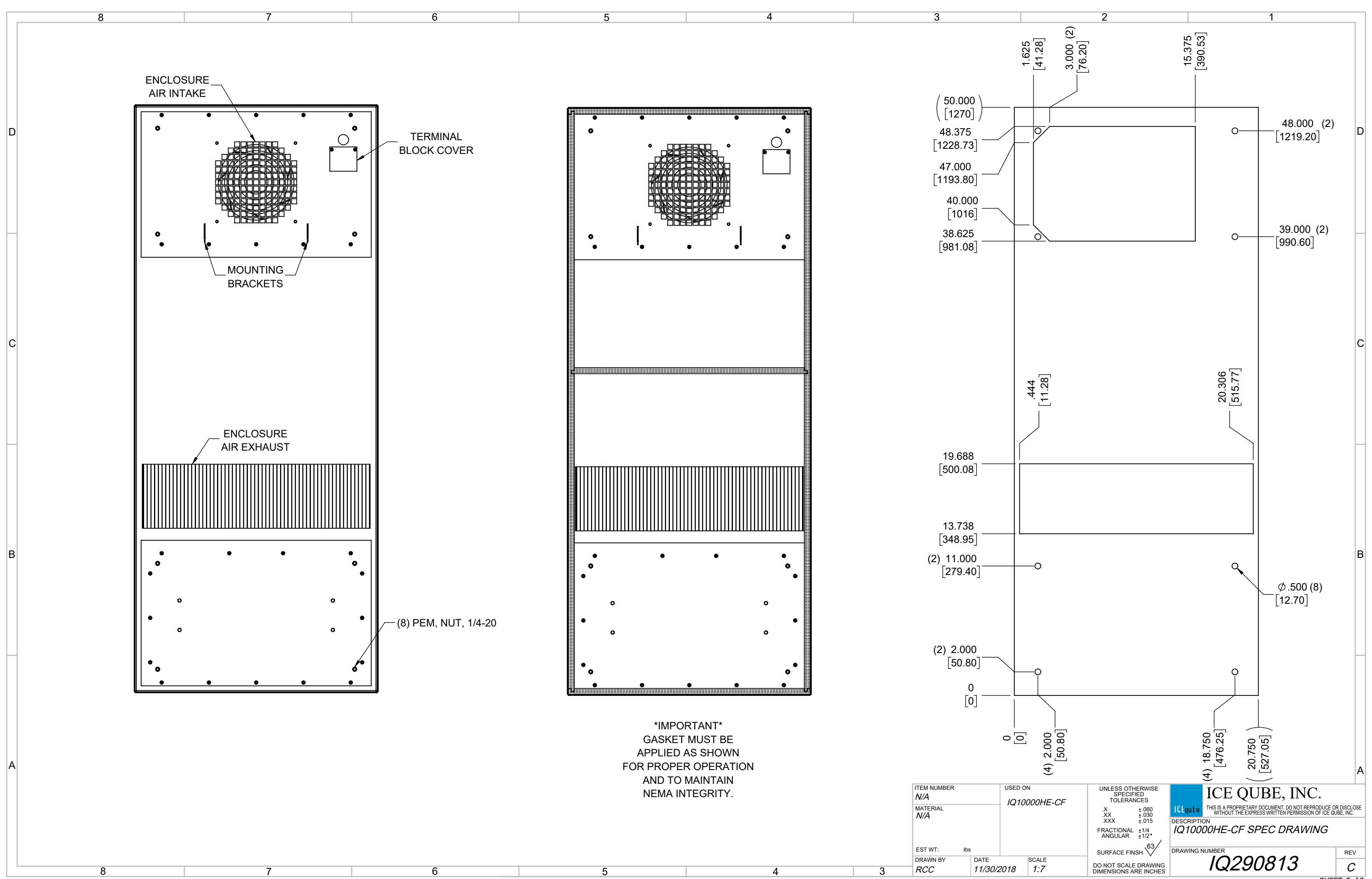
REV	CHG	REVISION	DATE	APP	DATE	CN #
C		REVISED CUTOUT	12/3/2020	NAT		
B		INCREASED TEMPERATURE RATING	4/4/2019	ART		
A		INITIAL DRAFT	11/30/2018	RCC		

ITEM NUMBER	N/A
MATERIAL	N/A
EST WT:	lbs
DRAWN BY	RCC

USED ON	IQ1000HE-CF
DATE	11/30/2018
SCALE	1:9

UNLESS OTHERWISE SPECIFIED TOLERANCES	
.X	±.060
.XX	±.030
.XXX	±.015
FRACTIONAL	±1/16
ANGULAR	±1/2°
SURFACE FINISH	63
DO NOT SCALE DRAWING DIMENSIONS ARE INCHES	

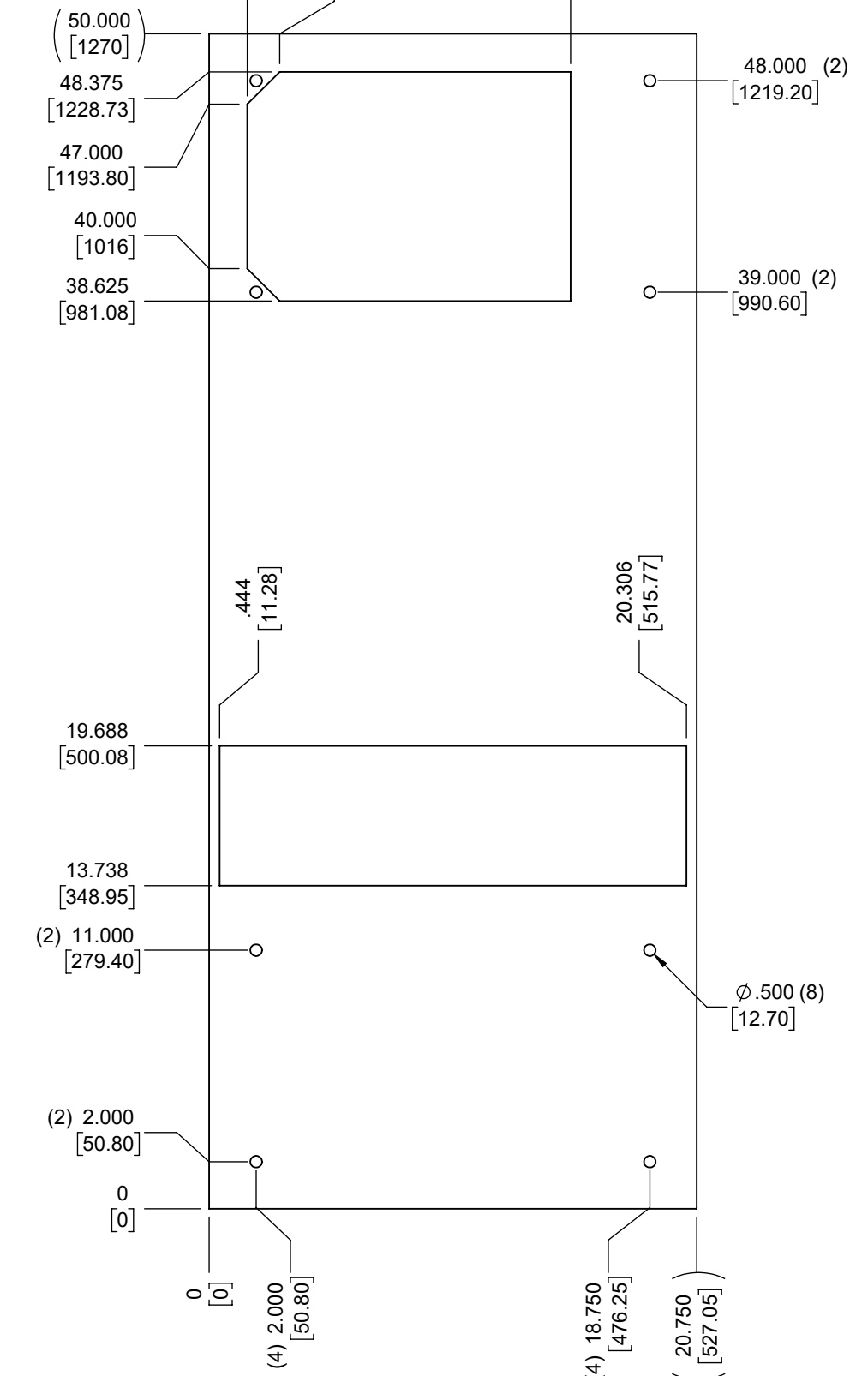
ICE QUBE, INC.
THIS IS A PROPRIETARY DOCUMENT. DO NOT REPRODUCE OR DISCLOSE WITHOUT THE EXPRESS WRITTEN PERMISSION OF ICE QUBE, INC.
 DESCRIPTION
IQ1000HE-CF SPEC DRAWING
 DRAWING NUMBER
IQ290813
 REV
C



D
C
B
A

D
C
B
A

IMPORTANT
GASKET MUST BE
APPLIED AS SHOWN
FOR PROPER OPERATION
AND TO MAINTAIN
NEMA INTEGRITY.



ITEM NUMBER N/A	USED ON IQ10000HE-CF	UNLESS OTHERWISE SPECIFIED TOLERANCES X ±.060 .XX ±.030 .XXX ±.015	<p>THIS IS A PROPRIETARY DOCUMENT. DO NOT REPRODUCE OR DISCLOSE WITHOUT THE EXPRESS WRITTEN PERMISSION OF ICE QUBE, INC.</p>
MATERIAL N/A		FRACTIONAL ±1/4 ANGULAR ±1/2°	
EST WT: lbs		SURFACE FINISH 63	DESCRIPTION IQ10000HE-CF SPEC DRAWING
DRAWN BY RCC	DATE 11/30/2018	SCALE 1:7	DRAWING NUMBER IQ290813
		DO NOT SCALE DRAWING DIMENSIONS ARE INCHES	REV C