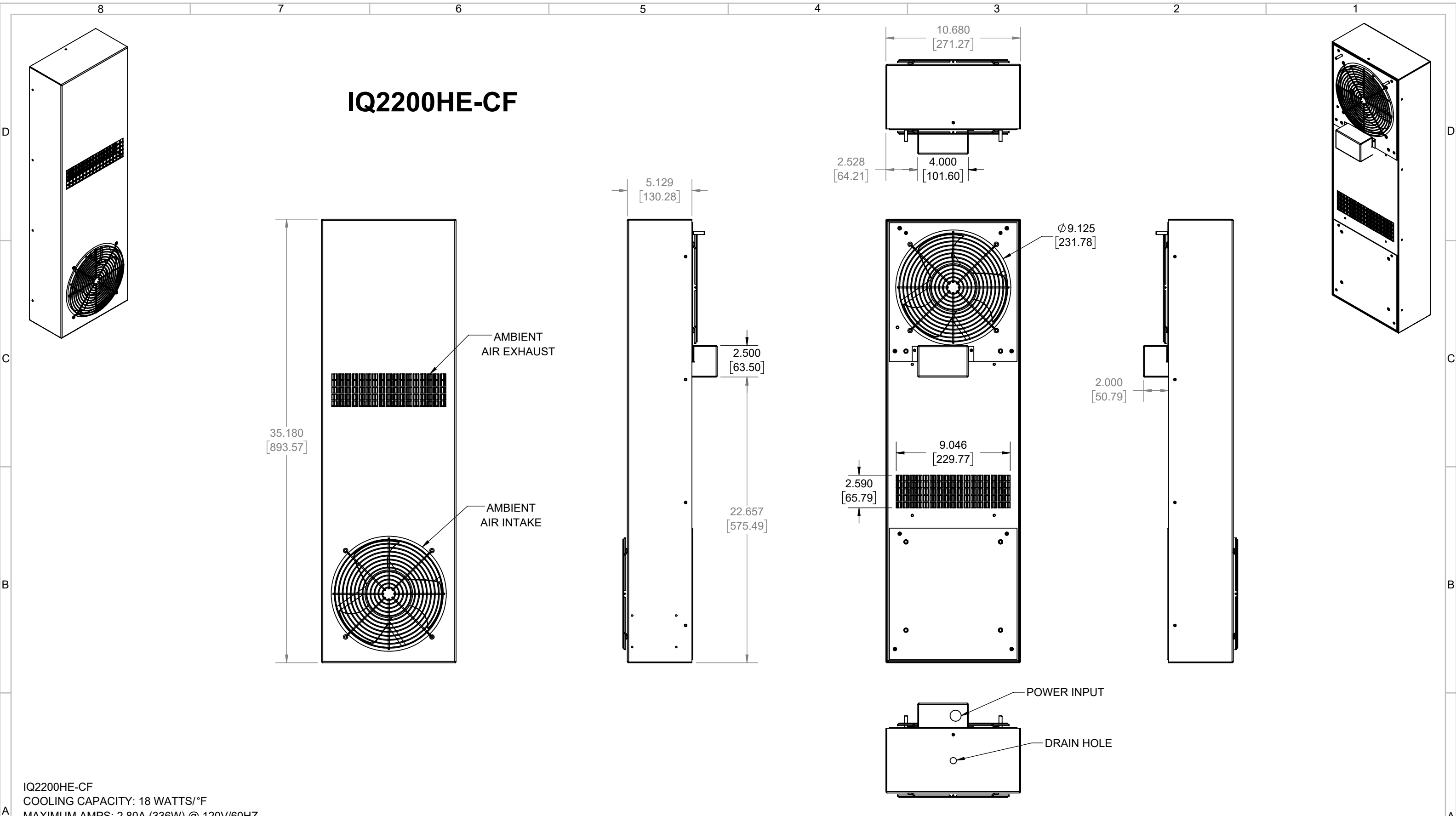


# IQ2200HE-CF



IQ2200HE-CF  
 COOLING CAPACITY: 18 WATTS/°F  
 MAXIMUM AMPS: 2.80A (336W) @ 120V/60HZ  
 MAXIMUM AMPS: 0.96/1.00A (221/230W) @ 230V 60/50HZ  
 MAXIMUM AMPS: 4.22A (101W) @ 24VDC  
 MAXIMUM AMPS: 2.08A (100W) @ 48VDC  
 MAXIMUM OPERATING TEMP: 176°F (80°C)  
 DIMENSIONS: 35.18" (894MM) H X 10.68" (271MM) W X 5.13" (130MM) D  
 WEIGHT: 37 LBS (16.8KG)

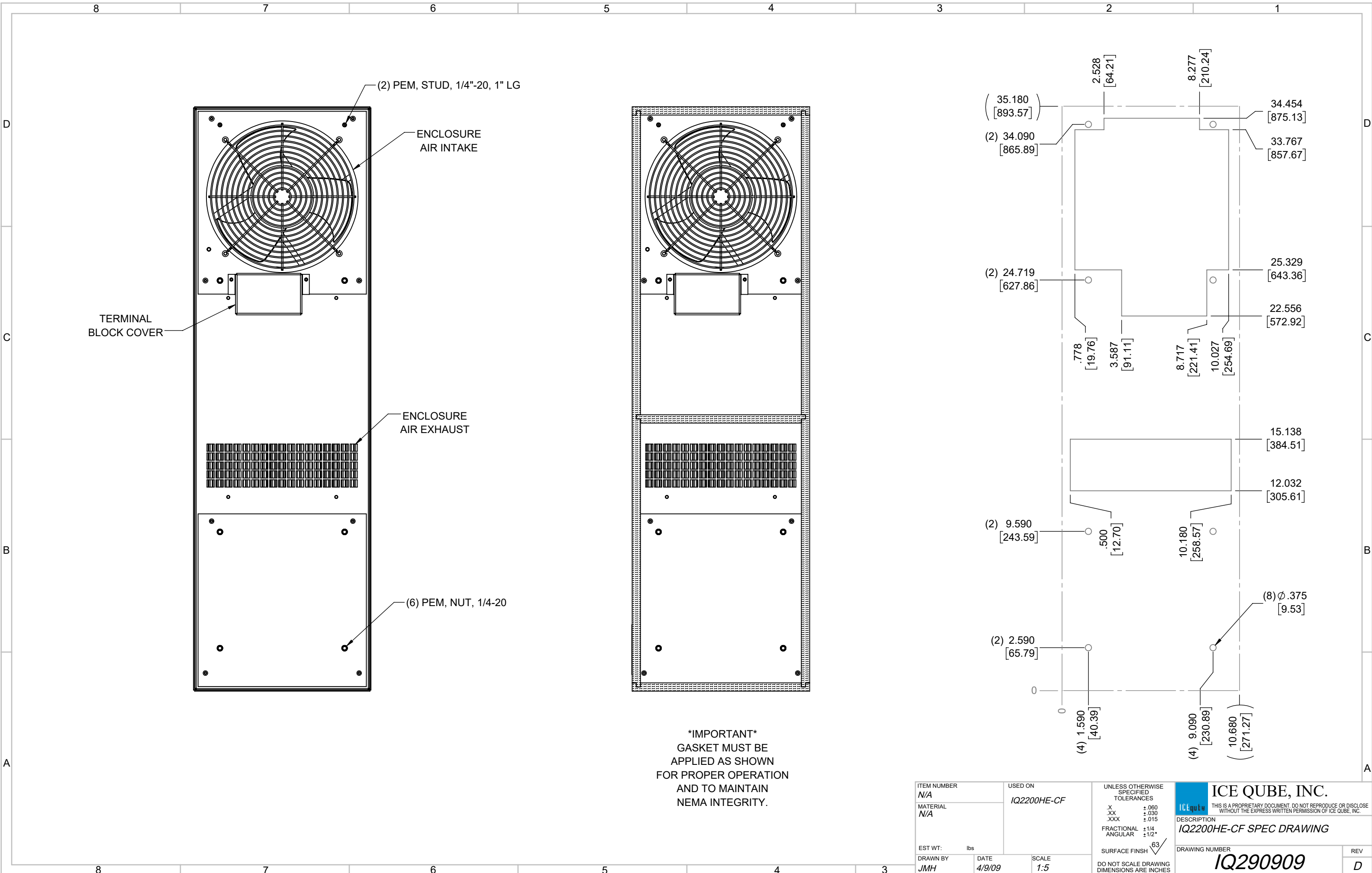
REV	REVISION	CHG	DATE	APP	DATE	CN #
D	UPDATED CUTOUT	NAT	1/14/2020			
C	INCREASED TEMPERATURE RATING	ART	4/4/2019			
B	REPLACED POWER CORD WITH TERMINAL BLOCK	RCC	11/30/2018			
A	REDRAWN IN SOLIDWORKS	RKG	9/10/2014			

ITEM NUMBER	N/A
MATERIAL	N/A
EST WT:	lbs
DRAWN BY	JMH

USED ON	IQ2200HE-CF
DATE	4/9/09
SCALE	1:7

UNLESS OTHERWISE SPECIFIED TOLERANCES	
.X	±.060
.XX	±.030
.XXX	±.015
FRACTIONAL	±1/16
ANGULAR	±1/2°
SURFACE FINISH	63
DO NOT SCALE DRAWING DIMENSIONS ARE INCHES	

**ICE QUBE, INC.**  
THIS IS A PROPRIETARY DOCUMENT. DO NOT REPRODUCE OR DISCLOSE WITHOUT THE EXPRESS WRITTEN PERMISSION OF ICE QUBE, INC.  
 DESCRIPTION  
**IQ2200HE-CF SPEC DRAWING**  
 DRAWING NUMBER  
**IQ290909**  
 REV  
**D**



**\*IMPORTANT\***  
 GASKET MUST BE  
 APPLIED AS SHOWN  
 FOR PROPER OPERATION  
 AND TO MAINTAIN  
 NEMA INTEGRITY.

ITEM NUMBER <i>N/A</i>	USED ON <i>IQ2200HE-CF</i>	UNLESS OTHERWISE SPECIFIED TOLERANCES X ±.060 .XX ±.030 .XXX ±.015 FRACTIONAL ±1/4 ANGULAR ±1/2°	 <small>THIS IS A PROPRIETARY DOCUMENT. DO NOT REPRODUCE OR DISCLOSE WITHOUT THE EXPRESS WRITTEN PERMISSION OF ICE QUBE, INC.</small> <b>DESCRIPTION</b> <i>IQ2200HE-CF SPEC DRAWING</i>
MATERIAL <i>N/A</i>	EST WT: lbs	SURFACE FINISH 63	
DRAWN BY <i>JMH</i>	DATE <i>4/9/09</i>	SCALE <i>1:5</i>	<small>REV</small> <b><i>D</i></b>