

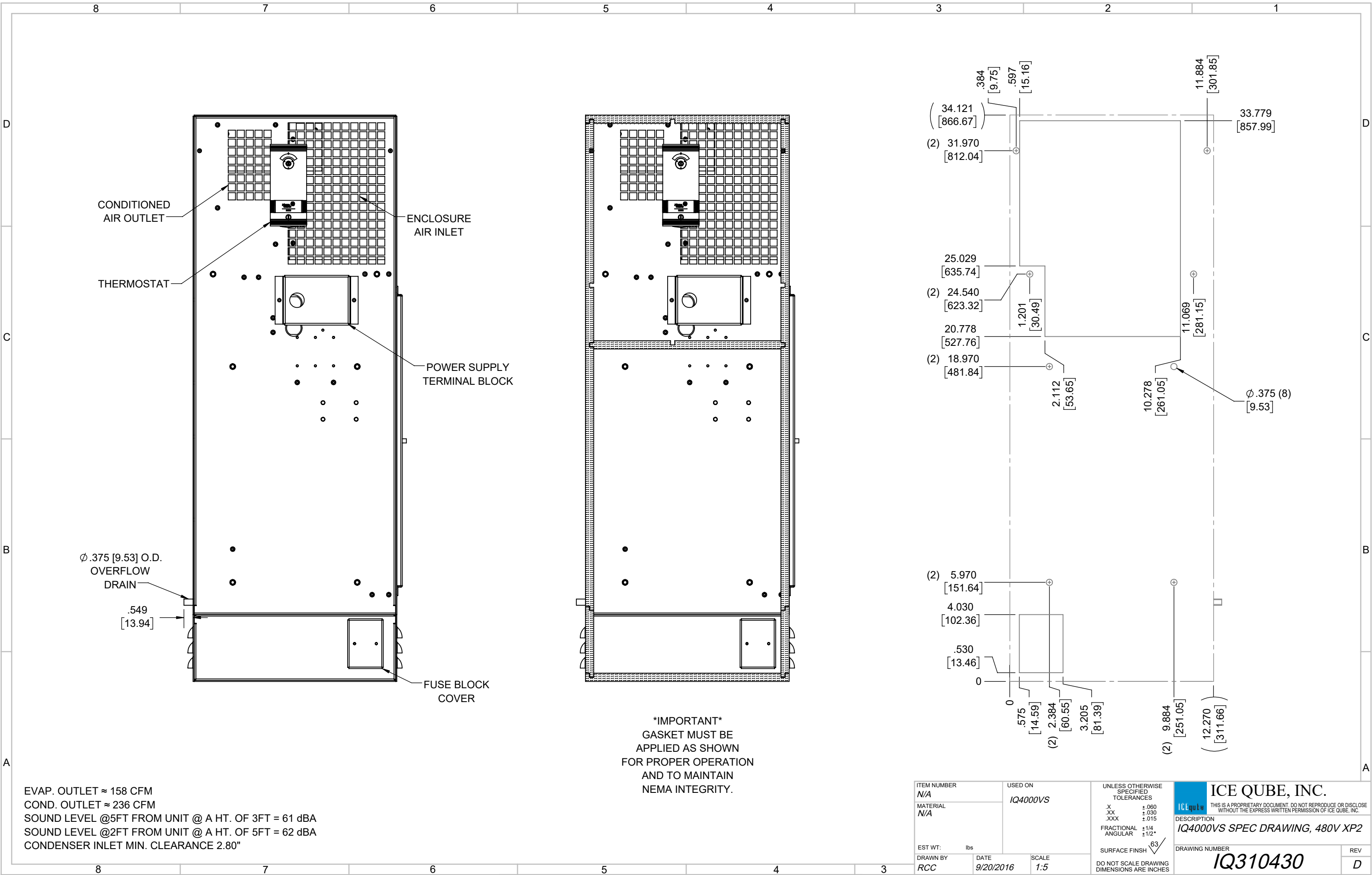
**IQ4000VS**  
 COOLING CAPACITY: 4000 BTUH (1173W) @131°F (55°C)  
 MAXIMUM AMPS: 2.2 (1056W) @480V 60HZ  
 MAXIMUM OPERATING TEMP: 131°F (55°C)  
 MINIMUM OPERATING TEMP: -4°F (-20°C)  
 DIMENSIONS: 34.12" (867MM) H X 12.27" (312MM) W X 8.34" (212MM) D  
 WEIGHT: 110 LBS (50KG)

REV	REVISION	CHG	DATE	APP	DATE	CN #
D	CHANGED THERMOSTAT DIMENSIONS	NAT	2/17/2021			ECN-1434
C	ADDED CFM, dBA, AND CLEARANCE INFO	RCC	3/29/2018			1351
B	ADDED WATTAGE INFO	RCC	1/4/2018			
A	INITIAL DRAFT	RCC	9/20/2016			

ITEM NUMBER	N/A	USED ON	IQ4000VS
MATERIAL	N/A		
EST WT:	lbs		
DRAWN BY	RCC	DATE	9/20/2016
		SCALE	1:7

UNLESS OTHERWISE SPECIFIED TOLERANCES	
X	±.060
.XX	±.030
.XXX	±.015
FRACTIONAL	±1/16
ANGULAR	±1/2°
SURFACE FINISH	63
DO NOT SCALE DRAWING DIMENSIONS ARE INCHES	

**ICE QUBE, INC.**  
THIS IS A PROPRIETARY DOCUMENT. DO NOT REPRODUCE OR DISCLOSE WITHOUT THE EXPRESS WRITTEN PERMISSION OF ICE QUBE, INC.  
 DESCRIPTION  
**IQ4000VS SPEC DRAWING, 480V XP2**  
 DRAWING NUMBER  
**IQ310430**  
 REV  
**D**



EVAP. OUTLET ≈ 158 CFM  
 COND. OUTLET ≈ 236 CFM  
 SOUND LEVEL @5FT FROM UNIT @ A HT. OF 3FT = 61 dBA  
 SOUND LEVEL @2FT FROM UNIT @ A HT. OF 5FT = 62 dBA  
 CONDENSER INLET MIN. CLEARANCE 2.80"

ITEM NUMBER N/A	USED ON IQ4000VS	UNLESS OTHERWISE SPECIFIED TOLERANCES X ±.060 .XX ±.030 .XXX ±.015 FRACTIONAL ±1/4 ANGULAR ±1/2°	<p>THIS IS A PROPRIETARY DOCUMENT. DO NOT REPRODUCE OR DISCLOSE WITHOUT THE EXPRESS WRITTEN PERMISSION OF ICE QUBE, INC.</p> <p>DESCRIPTION IQ4000VS SPEC DRAWING, 480V XP2</p>
MATERIAL N/A		SURFACE FINISH 63	
EST WT: lbs		DO NOT SCALE DRAWING DIMENSIONS ARE INCHES	DRAWING NUMBER IQ310430
DRAWN BY RCC	DATE 9/20/2016	SCALE 1:5	REV D