

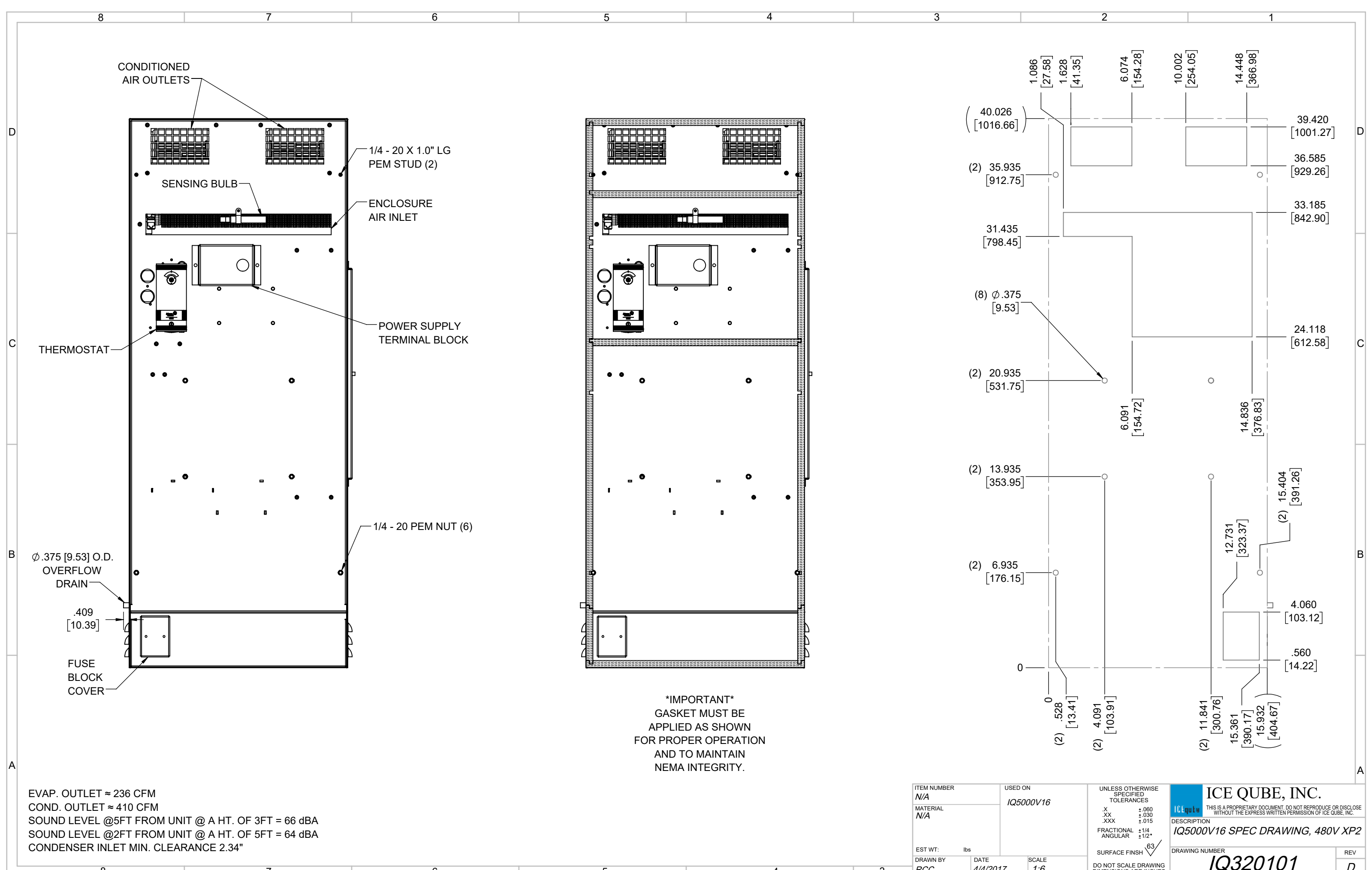
IQ5000V16
 COOLING CAPACITY: 5000 BTUH (1466W) @131°F (55°C)
 MAXIMUM AMPS: 2.4 (1152W) @480V 60HZ
 MAXIMUM OPERATING TEMP: 131°F (55°C)
 MINIMUM OPERATING TEMP: -4°F (-20°C)
 DIMENSIONS: 40.10" (1017MM) H X 15.93" (405MM) W X 7.34" (186MM) D
 WEIGHT: 125 LBS (56.8KG)

REV	REVISION	CHG	DATE	APP	DATE	CN #
D	CHANGED THERMOSTAT DIMENSIONS	NAT	2/23/2021			ECN-1434
C	ADDED CFM, dBA, AND CLEARANCE INFO	RCC	3/23/2018			1351
B	ADDED WATTAGE INFO	RCC	12/15/2017			
A	REDRAWN IN SW	RCC	4/4/2017			

ITEM NUMBER	N/A	USED ON	IQ5000V16
MATERIAL	N/A		
EST WT:	lbs		
DRAWN BY	RCC	DATE	4/4/2017
		SCALE	1:9

UNLESS OTHERWISE SPECIFIED TOLERANCES
 .X ±.060
 .XX ±.030
 .XXX ±.015
 FRACTIONAL ±1/16
 ANGULAR ±1/2°
 SURFACE FINISH 63
 DO NOT SCALE DRAWING DIMENSIONS ARE INCHES

ICE QUBE, INC.
THIS IS A PROPRIETARY DOCUMENT. DO NOT REPRODUCE OR DISCLOSE WITHOUT THE EXPRESS WRITTEN PERMISSION OF ICE QUBE, INC.
 DESCRIPTION
IQ5000V16 SPEC DRAWING, 480V XP2
 DRAWING NUMBER
IQ320101
 REV
D



CONDITIONED AIR OUTLETS

SENSING BULB

ENCLOSURE AIR INLET

THERMOSTAT

POWER SUPPLY TERMINAL BLOCK

1/4 - 20 X 1.0" LG PEM STUD (2)

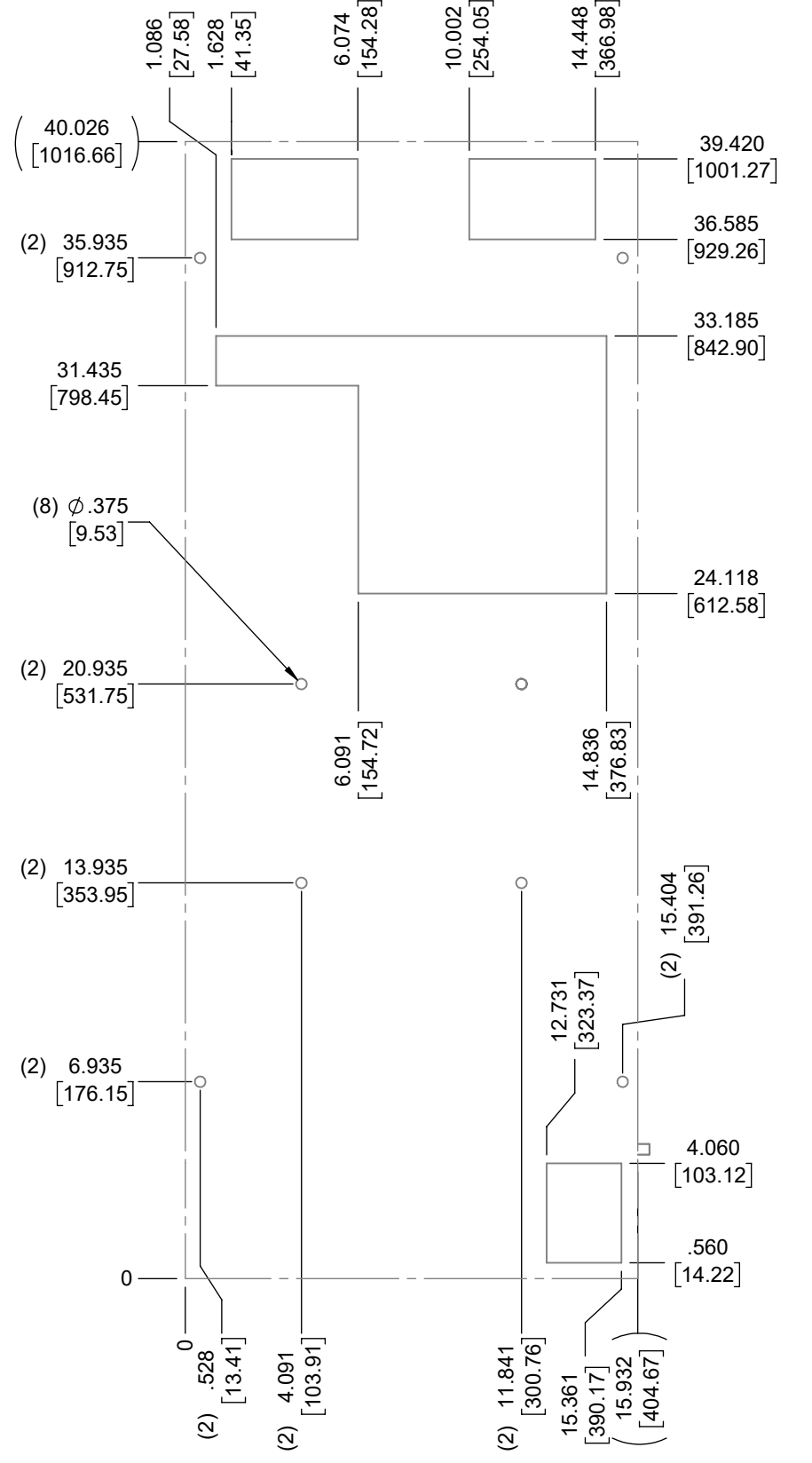
1/4 - 20 PEM NUT (6)

Ø .375 [9.53] O.D. OVERFLOW DRAIN

.409 [10.39]

FUSE BLOCK COVER

IMPORTANT
 GASKET MUST BE APPLIED AS SHOWN FOR PROPER OPERATION AND TO MAINTAIN NEMA INTEGRITY.



EVAP. OUTLET ≈ 236 CFM
 COND. OUTLET ≈ 410 CFM
 SOUND LEVEL @5FT FROM UNIT @ A HT. OF 3FT = 66 dBA
 SOUND LEVEL @2FT FROM UNIT @ A HT. OF 5FT = 64 dBA
 CONDENSER INLET MIN. CLEARANCE 2.34"

ITEM NUMBER N/A	USED ON IQ5000V16	UNLESS OTHERWISE SPECIFIED TOLERANCES X ±.060 .XX ±.030 .XXX ±.015 FRACTIONAL ±1/4 ANGULAR ±1/2°	<p>ICE QUBE, INC. <small>THIS IS A PROPRIETARY DOCUMENT. DO NOT REPRODUCE OR DISCLOSE WITHOUT THE EXPRESS WRITTEN PERMISSION OF ICE QUBE, INC.</small></p>
MATERIAL N/A		<p>EST WT: lbs</p> <p>DRAWN BY: RCC</p> <p>DATE: 4/4/2017</p> <p>SCALE: 1:6</p> <p>DO NOT SCALE DRAWING DIMENSIONS ARE INCHES</p>	
<p>DESCRIPTION IQ5000V16 SPEC DRAWING, 480V XP2</p>			<p>DRAWING NUMBER IQ320101</p>
			<p>REV D</p>