

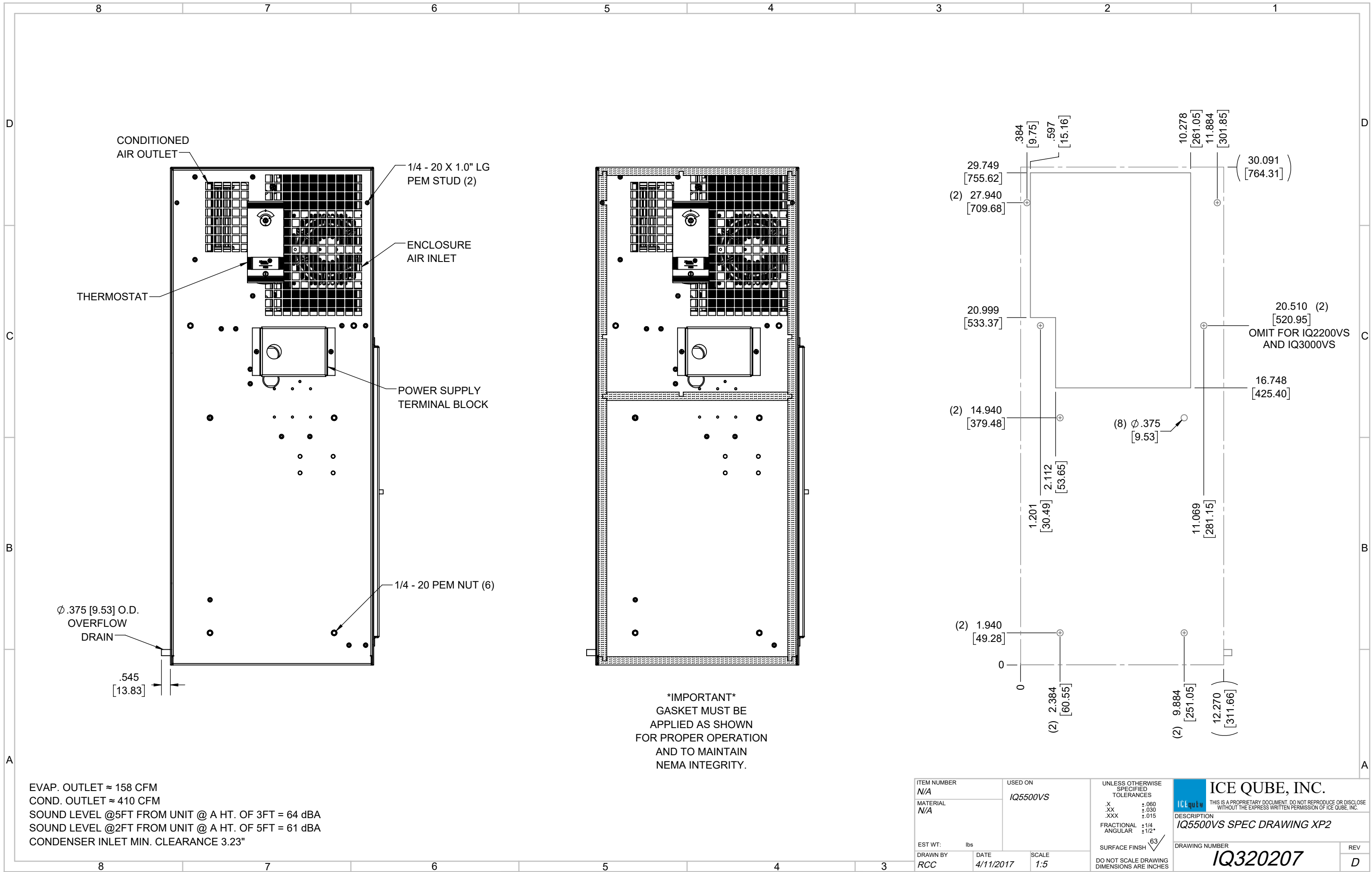
IQ5500VS  
 COOLING CAPACITY: 5500 BTUH (1613W) @131°F (55°C)  
 MAXIMUM AMPS: 10.4 (1248W) @120V/60HZ  
 MAXIMUM AMPS: 5.2/5.7 (1196/1254W) @230/220V 60/50HZ  
 MAXIMUM OPERATING TEMP: 131°F (55°C)  
 MINIMUM OPERATING TEMP: -4°F (-20°C)  
 DIMENSIONS: 30.09" (764MM) H X 12.27" (312MM) W X 10.39" (264MM) D  
 WEIGHT: 95 LBS (43.2KG)

REV	REVISION	CHG	DATE	APP	DATE	CN #
D	CHANGED THERMOSTAT DIMENSIONS	NAT	2/24/2021			ECN-1434
C	ADDED CFM, dBA, AND CLEARANCE INFO	RCC	3/28/2018			1351
B	ADDED WATTAGE INFO	RCC	1/3/2018			
A	REDRAWN IN SW	RCC	4/11/2017			

ITEM NUMBER	N/A	USED ON	IQ5500VS
MATERIAL	N/A		
EST WT:	lbs		
DRAWN BY	RCC	DATE	4/11/2017
		SCALE	1:9

UNLESS OTHERWISE SPECIFIED TOLERANCES  
 .X ±.060  
 .XX ±.030  
 .XXX ±.015  
 FRACTIONAL ±1/16  
 ANGULAR ±1/2°  
 SURFACE FINISH 63

**ICE QUBE, INC.**  
THIS IS A PROPRIETARY DOCUMENT. DO NOT REPRODUCE OR DISCLOSE WITHOUT THE EXPRESS WRITTEN PERMISSION OF ICE QUBE, INC.  
 DESCRIPTION  
**IQ5500VS SPEC DRAWING XP2**  
 DRAWING NUMBER  
**IQ320207**  
 REV  
**D**



EVAP. OUTLET ≈ 158 CFM  
 COND. OUTLET ≈ 410 CFM  
 SOUND LEVEL @5FT FROM UNIT @ A HT. OF 3FT = 64 dBA  
 SOUND LEVEL @2FT FROM UNIT @ A HT. OF 5FT = 61 dBA  
 CONDENSER INLET MIN. CLEARANCE 3.23"

ITEM NUMBER N/A	USED ON IQ5500VS	UNLESS OTHERWISE SPECIFIED TOLERANCES X ±.060 .XX ±.030 .XXX ±.015 FRACTIONAL ±1/4 ANGULAR ±1/2°	<p>ICE QUBE, INC.  <small>THIS IS A PROPRIETARY DOCUMENT. DO NOT REPRODUCE OR DISCLOSE WITHOUT THE EXPRESS WRITTEN PERMISSION OF ICE QUBE, INC.</small></p>
MATERIAL N/A		<p>EST WT: lbs</p> <p>DRAWN BY: RCC</p> <p>DATE: 4/11/2017</p> <p>SCALE: 1:5</p> <p>SURFACE FINISH: 63</p> <p>DO NOT SCALE DRAWING DIMENSIONS ARE INCHES</p>	
DESCRIPTION IQ5500VS SPEC DRAWING XP2			DRAWING NUMBER IQ320207
REV			D