

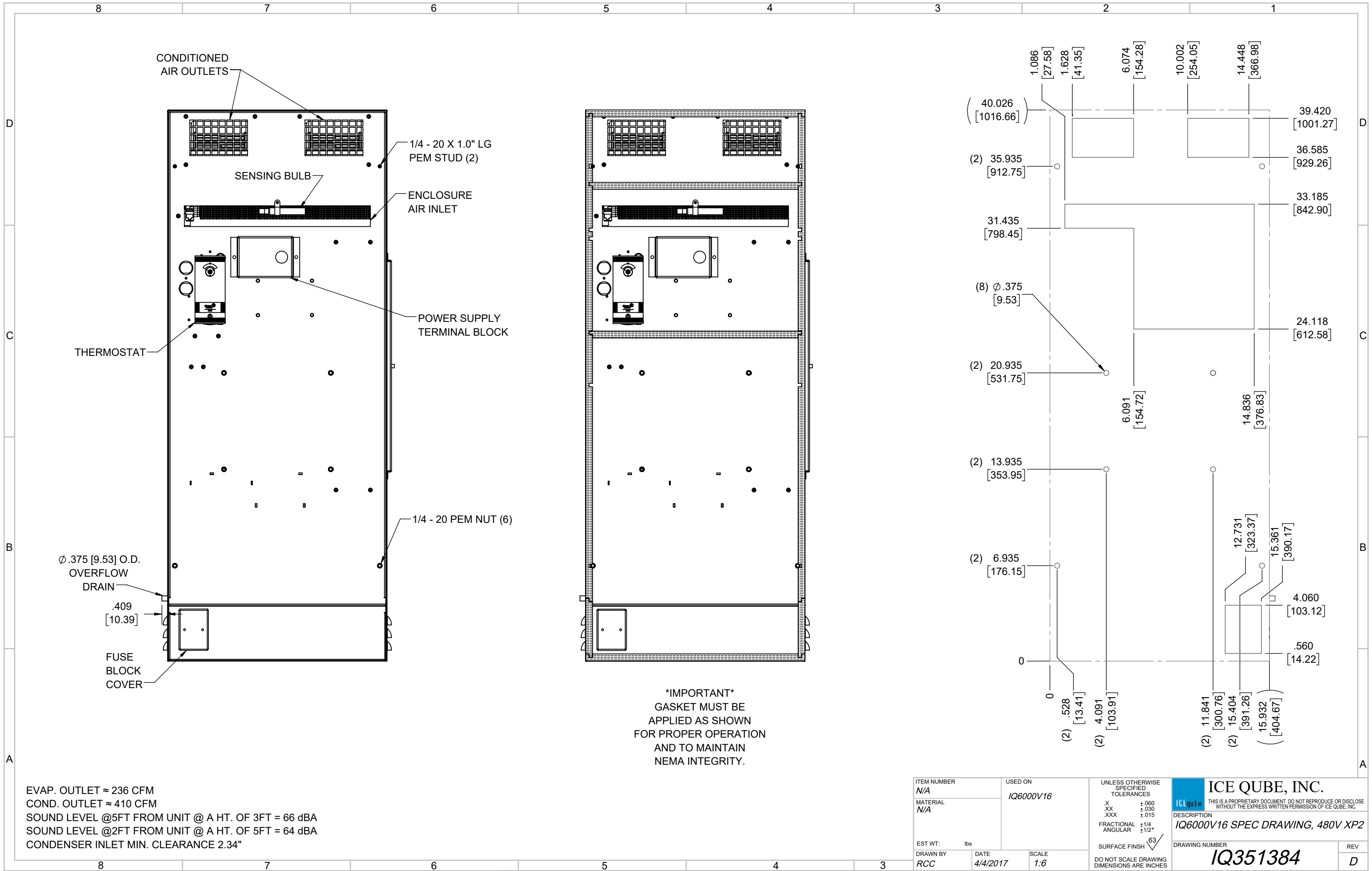
IQ6000V16  
 COOLING CAPACITY: 6000 BTUH (1760W) @131°F (55°C)  
 MAXIMUM AMPS: 2.5 (1200W) @480V 60HZ  
 MAXIMUM OPERATING TEMP: 131°F (55°C)  
 MINIMUM OPERATING TEMP: -4°F (-20°C)  
 DIMENSIONS: 40.10" (1017MM) H X 15.93" (405MM) W X 7.34" (186MM) D  
 WEIGHT: 125 LBS (56.8KG)

REV	REVISION	CHG	DATE	APP	DATE	CN #
D	CHANGED THERMOSTAT DIMENSIONS	NAT	2/24/2021			ECN-1434
C	ADDED CFM, dBA, AND CLEARANCE INFO	RCC	3/23/2018			1351
B	ADDED WATTAGE INFO	RCC	12/18/2017			
A	REDRAWN IN SW	RCC	4/4/2017			

ITEM NUMBER	N/A	USED ON	IQ6000V16
MATERIAL	N/A		
EST WT:	lbs		
DRAWN BY	RCC	DATE	4/4/2017
		SCALE	1:9

UNLESS OTHERWISE SPECIFIED TOLERANCES  
 .X ±.060  
 .XX ±.030  
 .XXX ±.015  
 FRACTIONAL ±1/16  
 ANGULAR ±1/2°  
 SURFACE FINISH 63

**ICE QUBE, INC.**  
THIS IS A PROPRIETARY DOCUMENT. DO NOT REPRODUCE OR DISCLOSE WITHOUT THE EXPRESS WRITTEN PERMISSION OF ICE QUBE, INC.  
 DESCRIPTION  
**IQ6000V16 SPEC DRAWING, 480V XP2**  
 DRAWING NUMBER  
**IQ351384**  
 REV  
**D**



CONDITIONED AIR OUTLETS

SENSING BULB

ENCLOSURE AIR INLET

1/4 - 20 X 1.0" LG PEM STUD (2)

THERMOSTAT

POWER SUPPLY TERMINAL BLOCK

1/4 - 20 PEM NUT (6)

Ø .375 [9.53] O.D. OVERFLOW DRAIN

.409 [10.39]

FUSE BLOCK COVER

**\*IMPORTANT\***  
 GASKET MUST BE APPLIED AS SHOWN FOR PROPER OPERATION AND TO MAINTAIN NEMA INTEGRITY.

(2) 1.086 [27.58]	(2) 1.628 [41.35]	6.074 [154.28]	10.002 [254.05]	14.448 [366.98]	39.420 [1001.27]
(2) 35.935 [912.75]					36.585 [929.26]
31.435 [798.45]					33.185 [842.90]
(8) Ø .375 [9.53]					24.118 [612.58]
(2) 20.935 [531.75]		6.091 [154.72]		14.836 [376.83]	
(2) 13.935 [353.95]					
(2) 6.935 [176.15]					
0	(2) .528 [13.41]	(2) 4.091 [103.91]			
	(2) 11.841 [300.76]				
	(2) 15.404 [391.26]				
	(2) 12.731 [323.37]				
	(2) 15.932 [404.67]				
					4.060 [103.12]
					.560 [14.22]

EVAP. OUTLET ≈ 236 CFM  
 COND. OUTLET ≈ 410 CFM  
 SOUND LEVEL @5FT FROM UNIT @ A HT. OF 3FT = 66 dBA  
 SOUND LEVEL @2FT FROM UNIT @ A HT. OF 5FT = 64 dBA  
 CONDENSER INLET MIN. CLEARANCE 2.34"

ITEM NUMBER N/A	USED ON IQ6000V16	UNLESS OTHERWISE SPECIFIED TOLERANCES X ±.060 .XX ±.030 .XXX ±.015 FRACTIONAL ±1/4 ANGULAR ±1/2°	<b>ICE QUBE, INC.</b> <small>THIS IS A PROPRIETARY DOCUMENT. DO NOT REPRODUCE OR DISCLOSE WITHOUT THE EXPRESS WRITTEN PERMISSION OF ICE QUBE, INC.</small> DESCRIPTION <b>IQ6000V16 SPEC DRAWING, 480V XP2</b> DRAWING NUMBER <b>IQ351384</b>
MATERIAL N/A	EST WT: lbs	SURFACE FINISH 63	
DRAWN BY RCC	DATE 4/4/2017	SCALE 1:6	REV D