

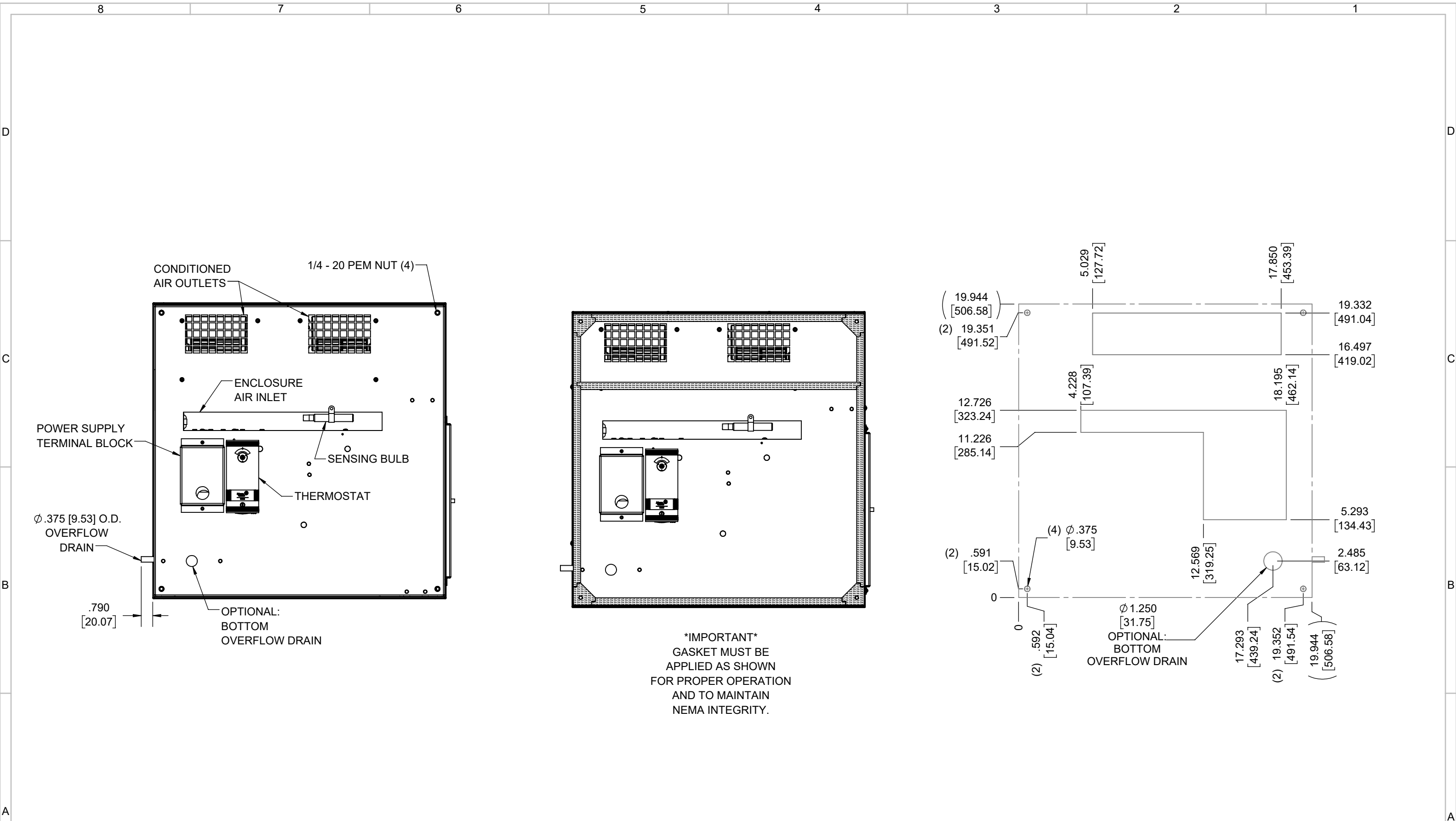
IQ7000T  
 COOLING CAPACITY: 7000 BTUH (2053W) @131°F (55°C)  
 MAXIMUM AMPS: 11.7 (1404W) @120V/60HZ  
 MAXIMUM AMPS: 5.3/5.8 (1219/1276W) @230/220V 60/50HZ  
 MAXIMUM OPERATING TEMP: 131°F (55°C)  
 MINIMUM OPERATING TEMP: -4°F (-20°C)  
 DIMENSIONS: 15.06" (383MM) H X 19.94" (507MM) W X 20.06" (510MM) D  
 WEIGHT: 112 LBS (50.9KG)

REV	CHG	DATE	APP	DATE	CN #
D		2/26/2021			ECN-1434
C		3/23/2018			1351
B		12/29/2017			
A		4/18/2017			

ITEM NUMBER	N/A	USED ON	IQ7000T
MATERIAL	N/A		
EST WT:	lbs		
DRAWN BY	RCC	DATE	4/18/2017
		SCALE	1:9

UNLESS OTHERWISE SPECIFIED TOLERANCES	
.X	±.060
.XX	±.030
.XXX	±.015
FRACTIONAL	±1/16
ANGULAR	±1/2°
SURFACE FINISH $\sqrt{63}$	
DO NOT SCALE DRAWING DIMENSIONS ARE INCHES	

**ICE QUBE, INC.**  
THIS IS A PROPRIETARY DOCUMENT. DO NOT REPRODUCE OR DISCLOSE WITHOUT THE EXPRESS WRITTEN PERMISSION OF ICE QUBE, INC.  
 DESCRIPTION  
**IQ7000T SPEC DRAWING XP2**  
 DRAWING NUMBER  
**IQ351443**  
 REV  
**D**



**\*IMPORTANT\***  
 GASKET MUST BE APPLIED AS SHOWN FOR PROPER OPERATION AND TO MAINTAIN NEMA INTEGRITY.

EVAP. OUTLET ≈ 410 CFM  
 COND. OUTLET ≈ 410 CFM  
 SOUND LEVEL @5FT FROM UNIT @ A HT. OF 3FT = 62 dBA  
 SOUND LEVEL @2FT FROM UNIT @ A HT. OF 5FT = 63 dBA  
 CONDENSER INLET MIN. CLEARANCE 3.05"

ITEM NUMBER N/A	USED ON IQ7000T	UNLESS OTHERWISE SPECIFIED TOLERANCES X ±.060 XX ±.030 XXX ±.015	<p>ICE QUBE, INC.  <small>THIS IS A PROPRIETARY DOCUMENT. DO NOT REPRODUCE OR DISCLOSE WITHOUT THE EXPRESS WRITTEN PERMISSION OF ICE QUBE, INC.</small></p>
MATERIAL N/A		FRACTIONAL ±1/4 ANGULAR ±1/2°	
EST WT: lbs	DATE 4/18/2017	SCALE 1:6	DESCRIPTION IQ7000T SPEC DRAWING XP2
DRAWN BY RCC			DRAWING NUMBER IQ351443
			REV D