

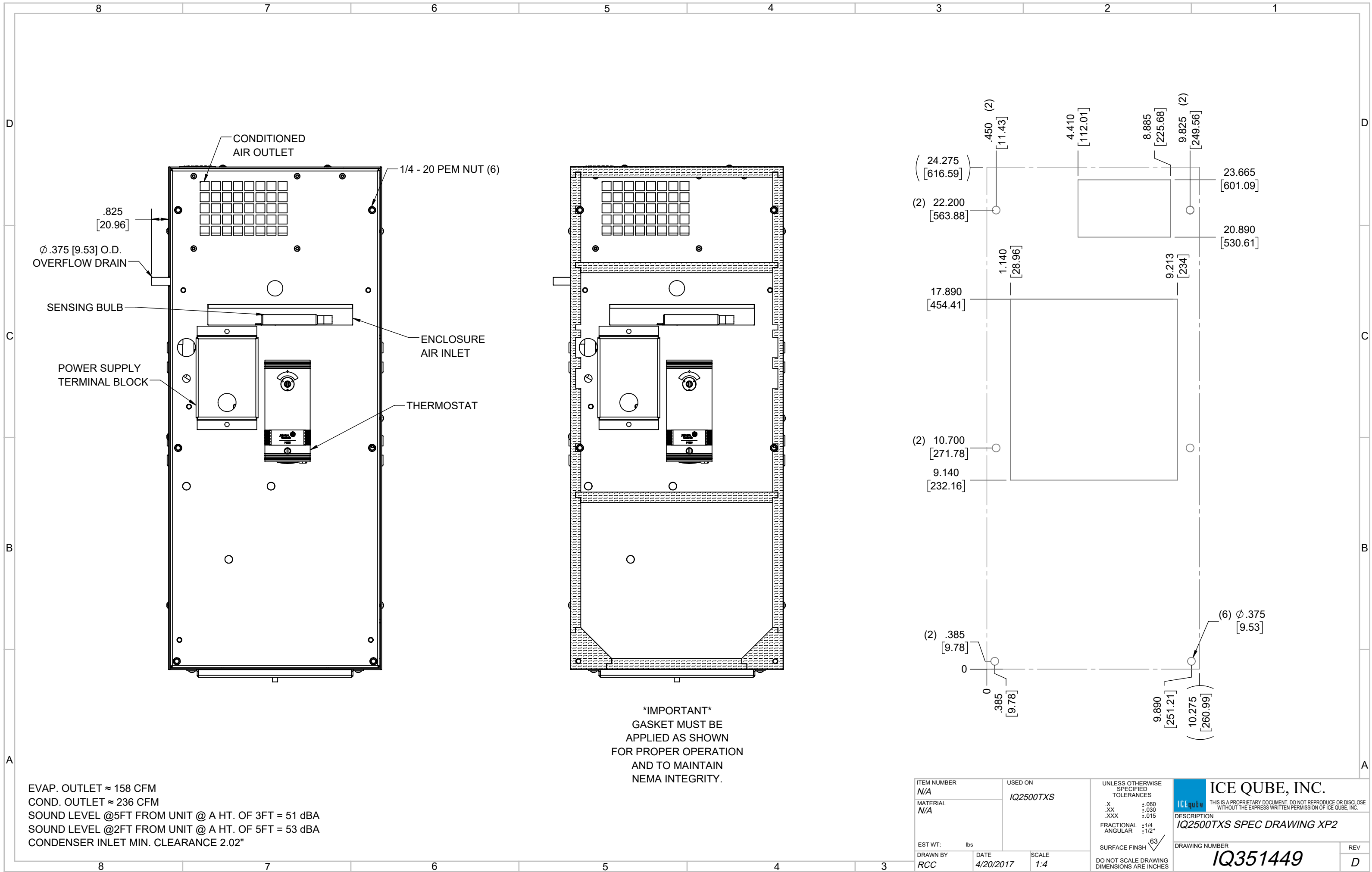
**IQ2500TXS**  
 COOLING CAPACITY: 2500 BTUH (733W) @131°F (55°C)  
 MAXIMUM AMPS: 7.6 (912W) @120V/60HZ  
 MAXIMUM AMPS: 3.6 (828W) @230V/60HZ  
 MAXIMUM OPERATING TEMP: 131°F (55°C)  
 MINIMUM OPERATING TEMP: -4°F (-20°C)  
 DIMENSIONS: 9.25" (235MM) H X 10.31" (262MM) W X 24.31" (617MM) D  
 WEIGHT: 70 LBS (31.8KG)

| REV | REVISION                           | CHG | DATE      | APP | DATE | CN #     |
|-----|------------------------------------|-----|-----------|-----|------|----------|
| D   | CHANGED THERMOSTAT DIMENSIONS      | NAT | 2/26/2021 |     |      | ECN-1434 |
| C   | ADDED CFM, dBA, AND CLEARANCE INFO | RCC | 3/28/2018 |     |      | 1351     |
| B   | ADDED WATTAGE INFO                 | RCC | 1/2/2018  |     |      |          |
| A   | REDRAWN IN SW                      | RCC | 4/20/2017 |     |      |          |

|             |     |         |           |
|-------------|-----|---------|-----------|
| ITEM NUMBER | N/A | USED ON | IQ2500TXS |
| MATERIAL    | N/A |         |           |
| EST WT:     | lbs |         |           |
| DRAWN BY    | RCC | DATE    | 4/20/2017 |
|             |     | SCALE   | 1:6       |

|  |       |
|--|-------|
| UNLESS OTHERWISE SPECIFIED TOLERANCES      |       |
| X  | ±.060 |
| .XX  | ±.030 |
| .XXX                                       | ±.015 |
| FRACTIONAL                                 | ±1/16 |
| ANGULAR                                    | ±1/2° |
| SURFACE FINISH $\sqrt{63}$                 |       |
| DO NOT SCALE DRAWING DIMENSIONS ARE INCHES |       |

**ICE QUBE, INC.**  
THIS IS A PROPRIETARY DOCUMENT. DO NOT REPRODUCE OR DISCLOSE WITHOUT THE EXPRESS WRITTEN PERMISSION OF ICE QUBE, INC.  
 DESCRIPTION  
**IQ2500TXS SPEC DRAWING XP2**  
 DRAWING NUMBER  
**IQ351449**  
 REV  
**D**



EVAP. OUTLET ≈ 158 CFM  
 COND. OUTLET ≈ 236 CFM  
 SOUND LEVEL @5FT FROM UNIT @ A HT. OF 3FT = 51 dBA  
 SOUND LEVEL @2FT FROM UNIT @ A HT. OF 5FT = 53 dBA  
 CONDENSER INLET MIN. CLEARANCE 2.02"

|                    |                      |   |   |
|--------------------|----------------------|---|---|
| ITEM NUMBER<br>N/A | USED ON<br>IQ2500TXS | UNLESS OTHERWISE SPECIFIED TOLERANCES<br>X ±.060<br>.XX ±.030<br>.XXX ±.015<br>FRACTIONAL ±1/4<br>ANGULAR ±1/2° | <p>ICE QUBE, INC.<br/> <small>THIS IS A PROPRIETARY DOCUMENT. DO NOT REPRODUCE OR DISCLOSE WITHOUT THE EXPRESS WRITTEN PERMISSION OF ICE QUBE, INC.</small></p> |
| MATERIAL<br>N/A    |                      | <p>EST WT: lbs</p> <p>SCALE 1:4</p> <p>DO NOT SCALE DRAWING DIMENSIONS ARE INCHES</p>                           |   |
| DRAWN BY<br>RCC    |                      | DATE<br>4/20/2017   | <p>DESCRIPTION<br/>IQ2500TXS SPEC DRAWING XP2</p> <p>DRAWING NUMBER<br/>IQ351449</p> <p>REV<br/>D</p>   |