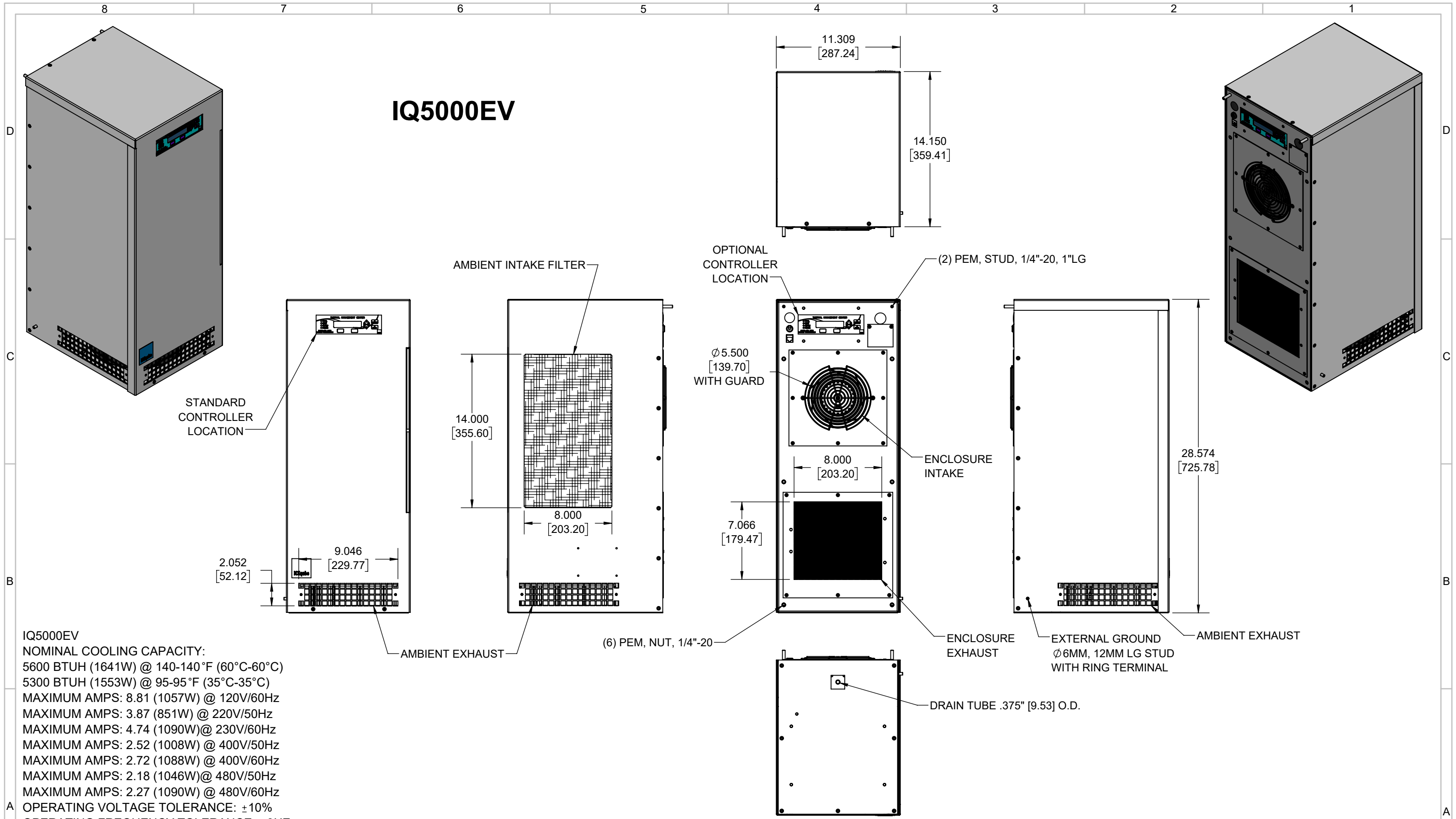


IQ5000EV



IQ5000EV
NOMINAL COOLING CAPACITY:
5600 BTUH (1641W) @ 140-140°F (60°C-60°C)
5300 BTUH (1553W) @ 95-95°F (35°C-35°C)
MAXIMUM AMPS: 8.81 (1057W) @ 120V/60Hz
MAXIMUM AMPS: 3.87 (851W) @ 220V/50Hz
MAXIMUM AMPS: 4.74 (1090W) @ 230V/60Hz
MAXIMUM AMPS: 2.52 (1008W) @ 400V/50Hz
MAXIMUM AMPS: 2.72 (1088W) @ 400V/60Hz
MAXIMUM AMPS: 2.18 (1046W) @ 480V/50Hz
MAXIMUM AMPS: 2.27 (1090W) @ 480V/60Hz
OPERATING VOLTAGE TOLERANCE: ±10%
OPERATING FREQUENCY TOLERANCE: ±3HZ
MAXIMUM OPERATING TEMPERATURE: 140°F (60°C)
DIMENSIONS: 28.584" (726MM) H x 11.309" (287MM) W x 14.150" (359MM) D
WEIGHT: 97.5 LBS (44.2KG) @ 120/220/230V
WEIGHT: 117.5 LBS (53.3KG) @ 400/480V
REFRIGERANT CHARGE: R134-A 24OZ (680G)

REVISION						
REV	REVISION	CHG	DATE	APP	DATE	CN #
H	ADDED VOLTAGE AND FREQUENCY TOLERANCE	NAT	9/2/2022			
G	UPDATE AMPS	JJH	8/31/2022			
F	ADDED CFM, dBA, AND CLEARANCE INFO	RCC	3/22/2018	ART	5/11/2018	1347
E	UPDATED UNIT DATA	JGG	12/15/2017	ART	12/15/2017	1336

ITEM NUMBER N/A		USED ON IQ5000EV	
MATERIAL N/A			
EST WT: lbs			
DRAWN BY ART		DATE 1/20/2016	SCALE 1:8

UNLESS OTHERWISE SPECIFIED TOLERANCES	
.X	±.060
.XX	±.030
.XXX	±.015
FRACTIONAL	±1/16
ANGULAR	±1/2°
SURFACE FINISH	
DO NOT SCALE DRAWING DIMENSIONS ARE INCHES	

ICE QUBE, INC.	
THIS IS A PROPRIETARY DOCUMENT. DO NOT REPRODUCE OR DISCLOSE WITHOUT THE EXPRESS WRITTEN PERMISSION OF ICE QUBE, INC.	
DESCRIPTION IQ5000EV SPEC DRAWING	
DRAWING NUMBER IQ350928	REV H

