

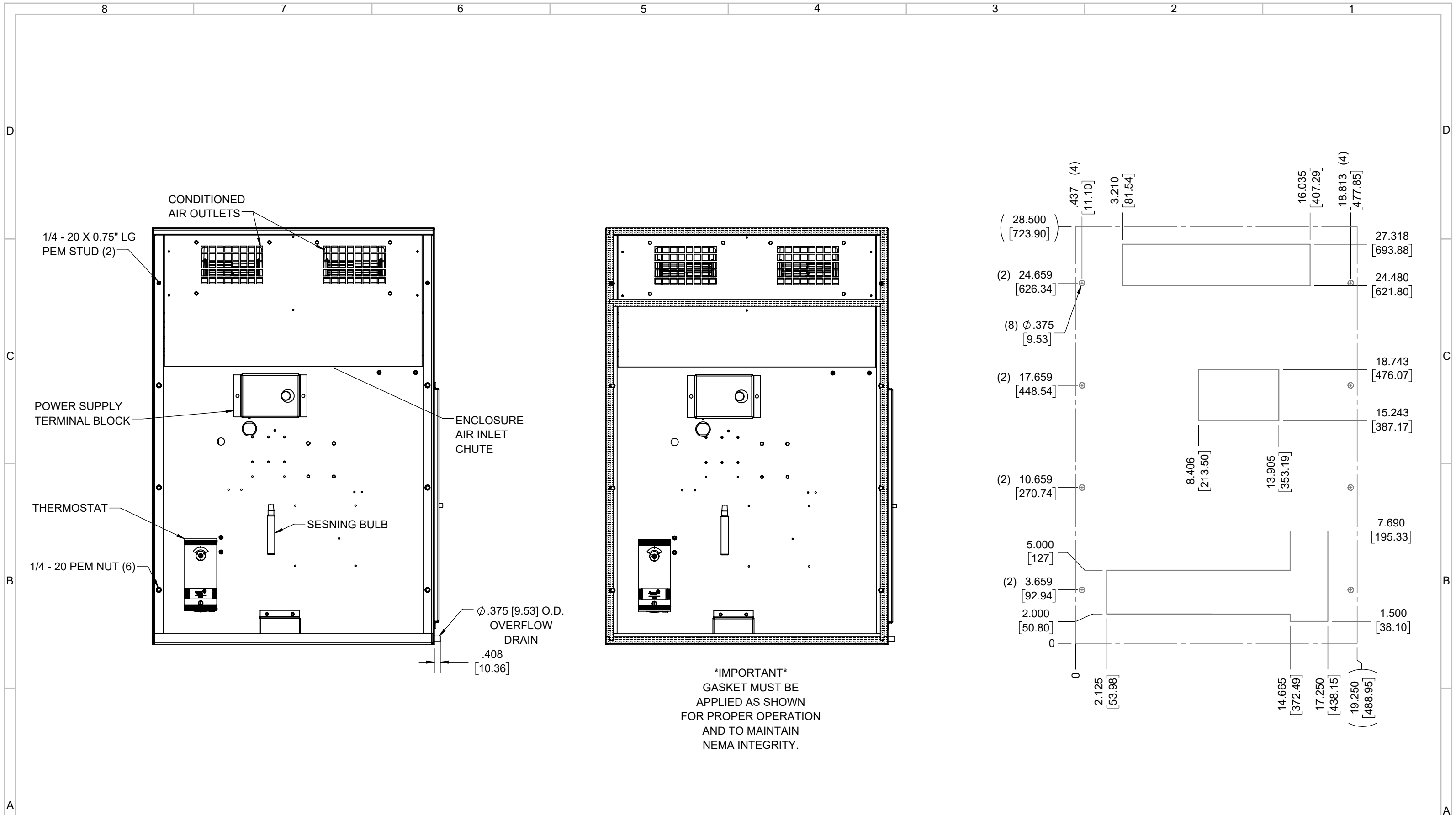
IQ2500V
 COOLING CAPACITY: 2500 BTUH (733W) @131°F (55°C)
 MAXIMUM AMPS: 7.3 (876W) @120V/60HZ
 MAXIMUM AMPS: 3.5 (805W) @230V/60HZ
 MAXIMUM OPERATING TEMP: 131°F (55°C)
 MINIMUM OPERATING TEMP: -4°F (-20°C)
 DIMENSIONS: 28.50" (724MM) H X 19.31" (490MM) W X 6.41" (163MM) D
 WEIGHT: 94 LBS (42.7KG)

REV	REVISION	CHG	DATE	APP	DATE	CN #
D	CHANGED THERMOSTAT DIMENSIONS	NAT	2/15/2021			ECN-1434
C	ADDED CFM, dBA, AND CLEARANCE INFO	RCC	3/28/2018			1351
B	ADDED WATTAGE INFO	RCC	1/3/2018			
A	REDRAWN IN SW	RCC	4/13/2017			

ITEM NUMBER	N/A	USED ON	IQ2500V
MATERIAL	N/A		
EST WT:	lbs		
DRAWN BY	RCC	DATE	4/13/2017
		SCALE	1:7

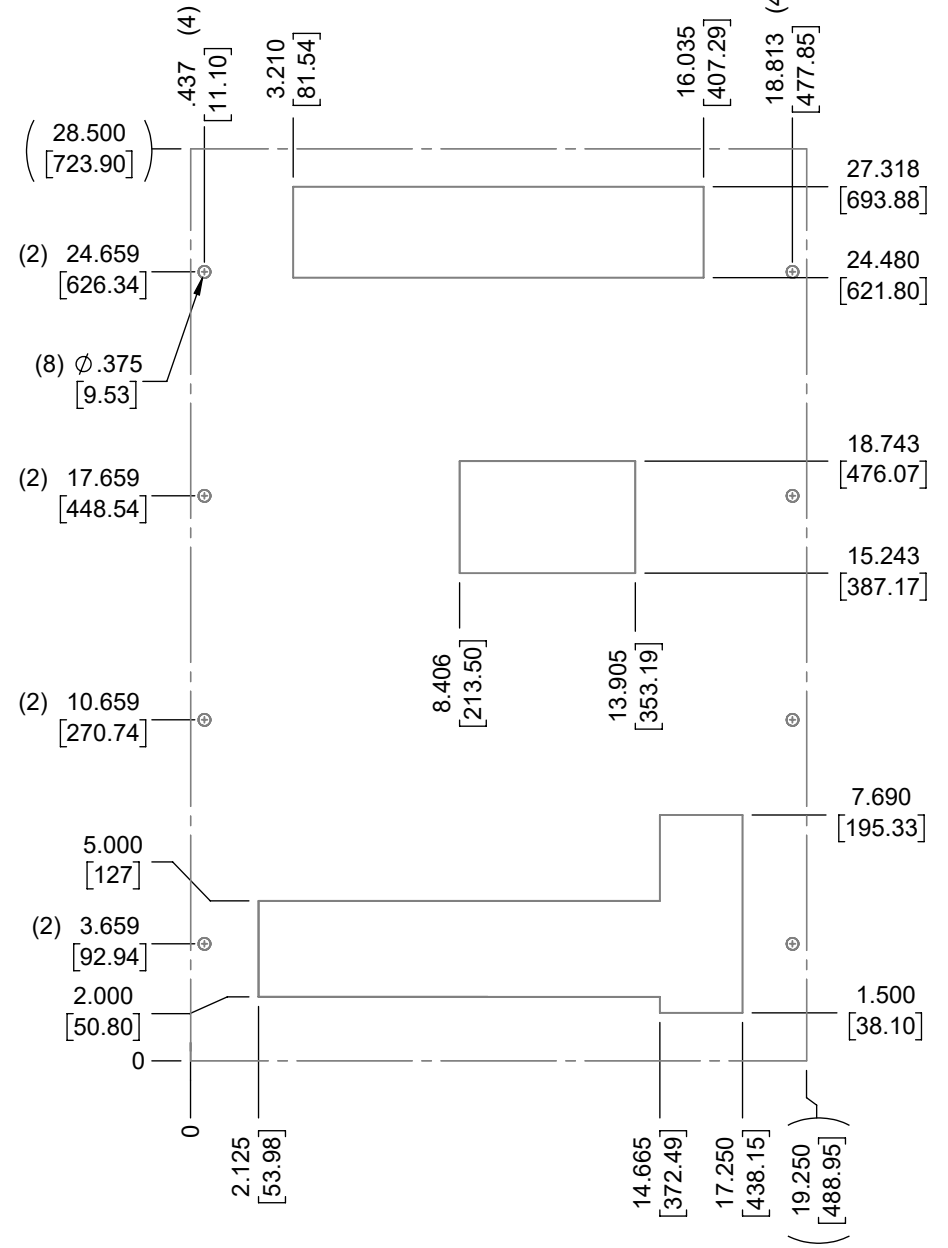
UNLESS OTHERWISE SPECIFIED TOLERANCES	
.X	±.060
.XX	±.030
.XXX	±.015
FRACTIONAL	±1/16
ANGULAR	±1/2°
SURFACE FINISH 63	
DO NOT SCALE DRAWING DIMENSIONS ARE INCHES	

ICE QUBE, INC.
THIS IS A PROPRIETARY DOCUMENT. DO NOT REPRODUCE OR DISCLOSE WITHOUT THE EXPRESS WRITTEN PERMISSION OF ICE QUBE, INC.
 DESCRIPTION
IQ2500V SPEC DRAWING XP2
 DRAWING NUMBER
IQ300229
 REV
D



IMPORTANT
 GASKET MUST BE
 APPLIED AS SHOWN
 FOR PROPER OPERATION
 AND TO MAINTAIN
 NEMA INTEGRITY.

EVAP. OUTLET ≈ 236 CFM
 COND. OUTLET ≈ 236 CFM
 SOUND LEVEL @5FT FROM UNIT @ A HT. OF 3FT = 55 dBA
 SOUND LEVEL @2FT FROM UNIT @ A HT. OF 5FT = 55 dBA
 CONDENSER INLET MIN. CLEARANCE 2.04"



ITEM NUMBER <i>N/A</i>	USED ON <i>IQ2500V</i>	UNLESS OTHERWISE SPECIFIED TOLERANCES X ±.060 .XX ±.030 .XXX ±.015 FRACTIONAL ±1/4 ANGULAR ±1/2°	 <small>THIS IS A PROPRIETARY DOCUMENT. DO NOT REPRODUCE OR DISCLOSE WITHOUT THE EXPRESS WRITTEN PERMISSION OF ICE QUBE, INC.</small> DESCRIPTION IQ2500V SPEC DRAWING XP2
MATERIAL <i>N/A</i>		SURFACE FINISH 63	
EST WT: lbs	DATE <i>4/13/2017</i>	SCALE <i>1:6</i>	DRAWING NUMBER IQ300229
DRAWN BY <i>RCC</i>		DO NOT SCALE DRAWING DIMENSIONS ARE INCHES	REV D