

IQ4500V
 COOLING CAPACITY: 4500 BTUH (1320W) @131°F (55°C)
 MAXIMUM AMPS: 2.3 (1104W) @480V/60HZ
 MAXIMUM OPERATING TEMP: 131°F (55°C)
 MINIMUM OPERATING TEMP: -4°F (-20°C)
 DIMENSIONS: 32.53" (826MM) H X 19.31" (490MM) W X 6.41" (163MM) D
 WEIGHT: 119 LBS (54.1KG)

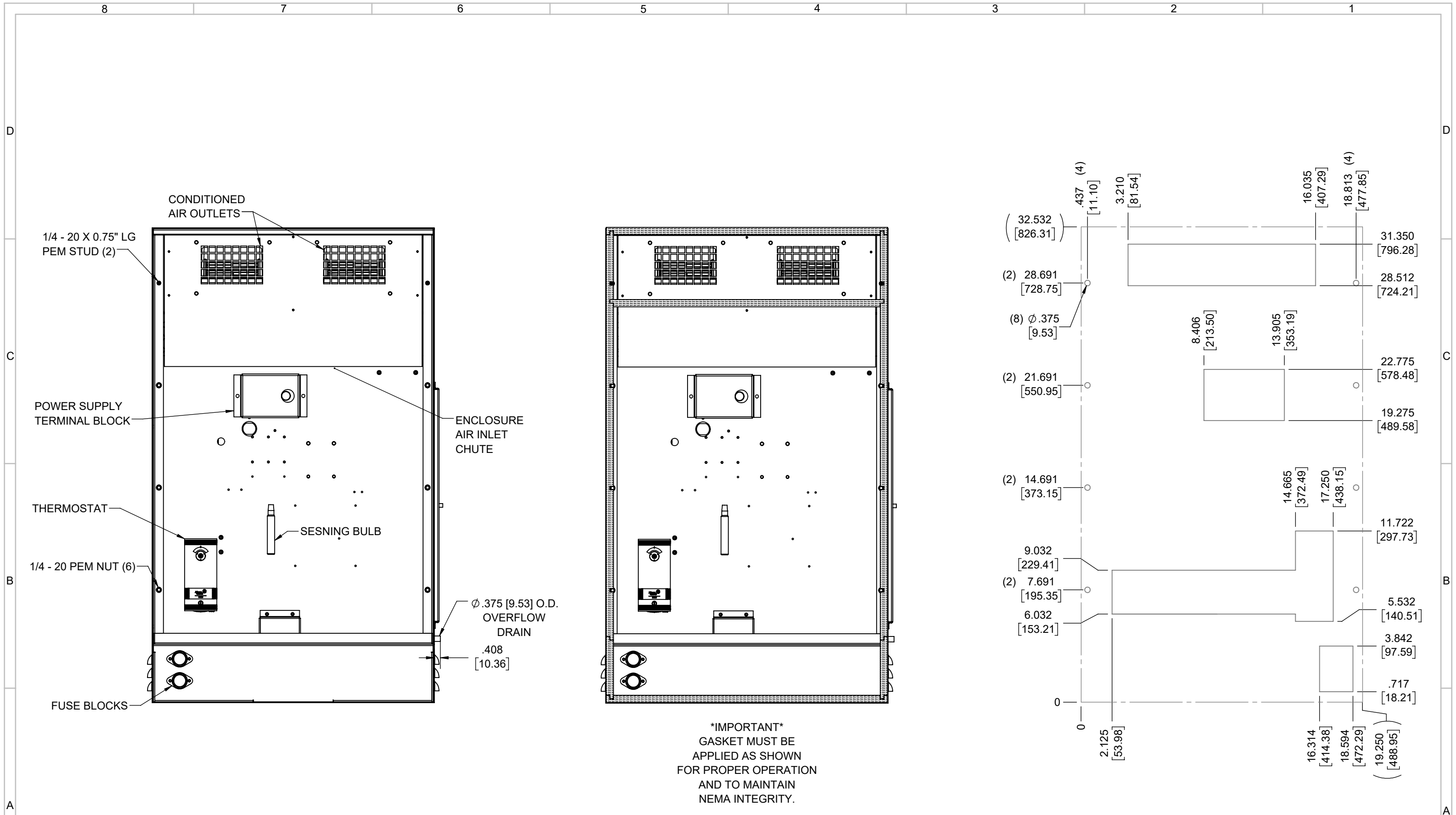
REV	REVISION	CHG	DATE	APP	DATE	CN #
D	CHANGED THERMOSTAT DIMENSIONS	NAT	2/15/2021			ECN-1434
C	ADDED CFM, dBA, AND CLEARANCE INFO	RCC	3/29/2018			1351
B	ADDED WATTAGE INFO	RCC	1/4/2018			
A	REDRAWN IN SW	RCC	4/13/2017			

ITEM NUMBER N/A	USED ON IQ4500V
MATERIAL N/A	
EST WT: lbs	
DRAWN BY RCC	DATE 4/13/2017
	SCALE 1:8

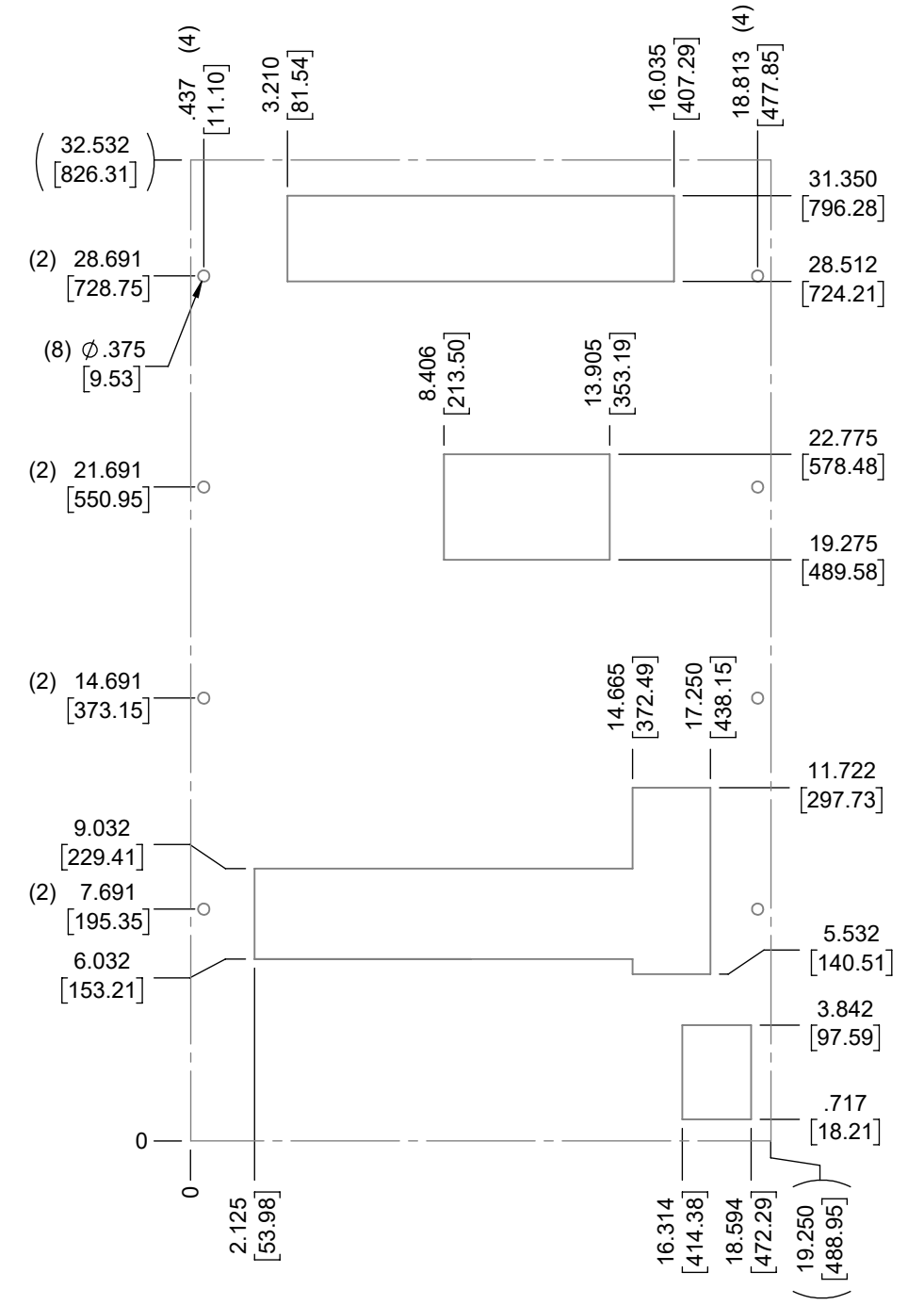
UNLESS OTHERWISE SPECIFIED TOLERANCES
 .X ±.060
 .XX ±.030
 .XXX ±.015
 FRACTIONAL ±1/16
 ANGULAR ±1/2°
 SURFACE FINISH 63

DO NOT SCALE DRAWING DIMENSIONS ARE INCHES

ICE QUBE, INC.
THIS IS A PROPRIETARY DOCUMENT. DO NOT REPRODUCE OR DISCLOSE WITHOUT THE EXPRESS WRITTEN PERMISSION OF ICE QUBE, INC.
 DESCRIPTION
IQ4500V SPEC DRAWING, 480V XP2
 DRAWING NUMBER
IQ351431
 REV
D



IMPORTANT
 GASKET MUST BE
 APPLIED AS SHOWN
 FOR PROPER OPERATION
 AND TO MAINTAIN
 NEMA INTEGRITY.



EVAP. OUTLET ≈ 236 CFM
 COND. OUTLET ≈ 236 CFM
 SOUND LEVEL @5FT FROM UNIT @ A HT. OF 3FT = 55 dBA
 SOUND LEVEL @2FT FROM UNIT @ A HT. OF 5FT = 55 dBA
 CONDENSER INLET MIN. CLEARANCE 2.04"

ITEM NUMBER <i>N/A</i>	USED ON <i>IQ4500V</i>	UNLESS OTHERWISE SPECIFIED TOLERANCES X ±.060 XX ±.030 XXX ±.015 FRACTIONAL ±1/4 ANGULAR ±1/2°	 <small>THIS IS A PROPRIETARY DOCUMENT. DO NOT REPRODUCE OR DISCLOSE WITHOUT THE EXPRESS WRITTEN PERMISSION OF ICE QUBE, INC.</small>
MATERIAL <i>N/A</i>		SURFACE FINISH 63	
EST. WT. lbs	DATE <i>4/13/2017</i>	SCALE <i>1:6</i>	DESCRIPTION <i>IQ4500V SPEC DRAWING, 480V XP2</i>
DRAWN BY <i>RCC</i>			DRAWING NUMBER <i>IQ351431</i>
			REV <i>D</i>