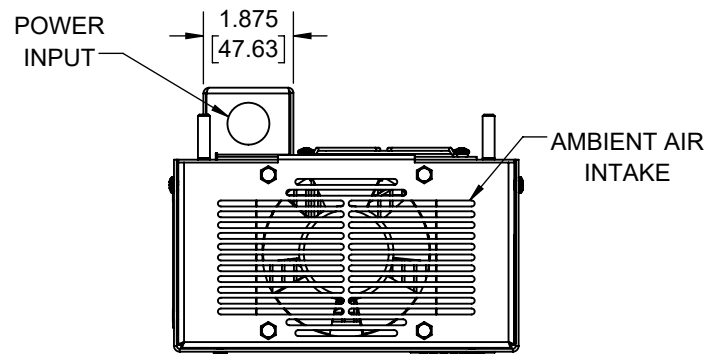
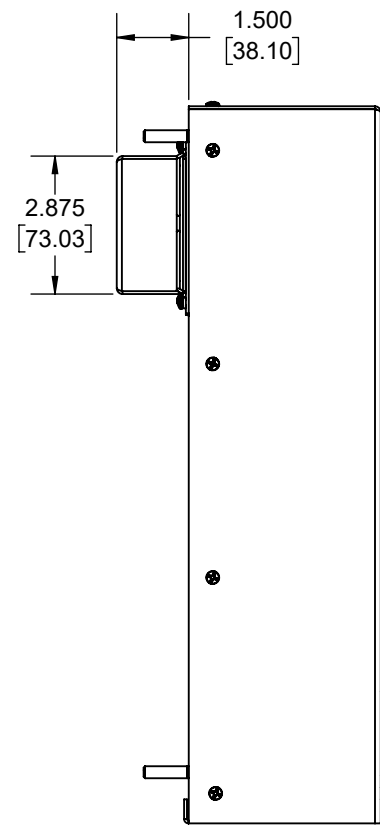
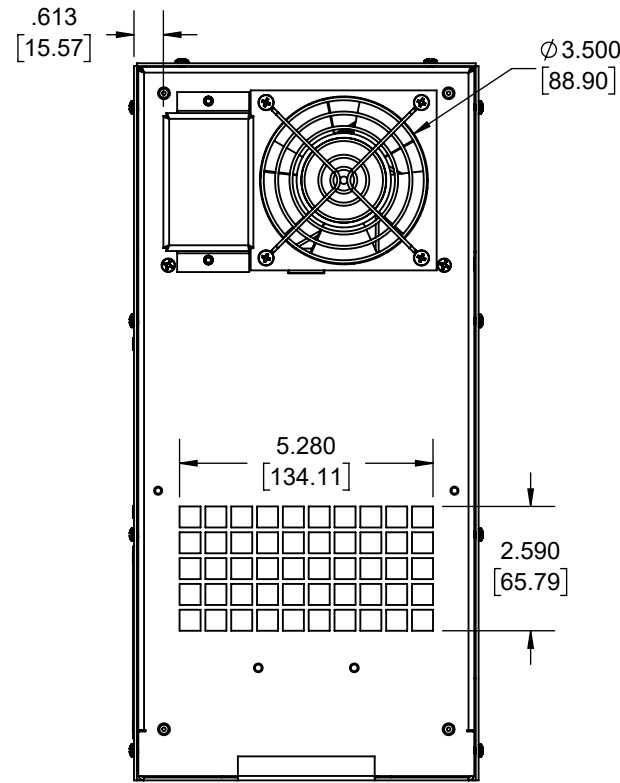
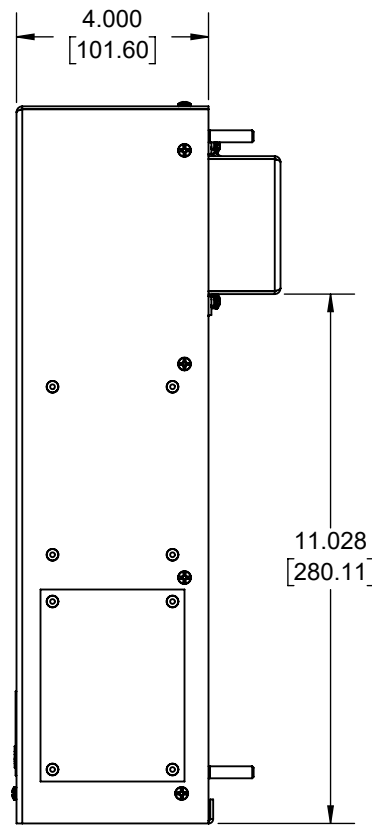
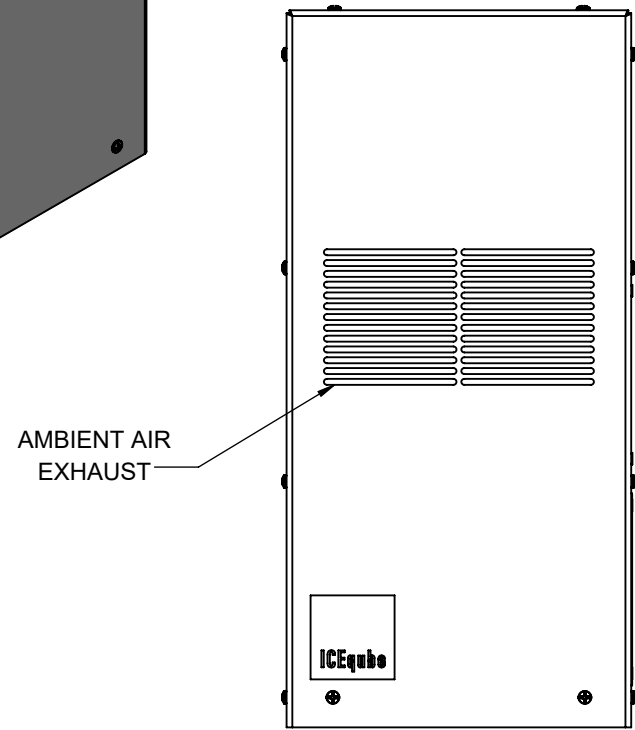
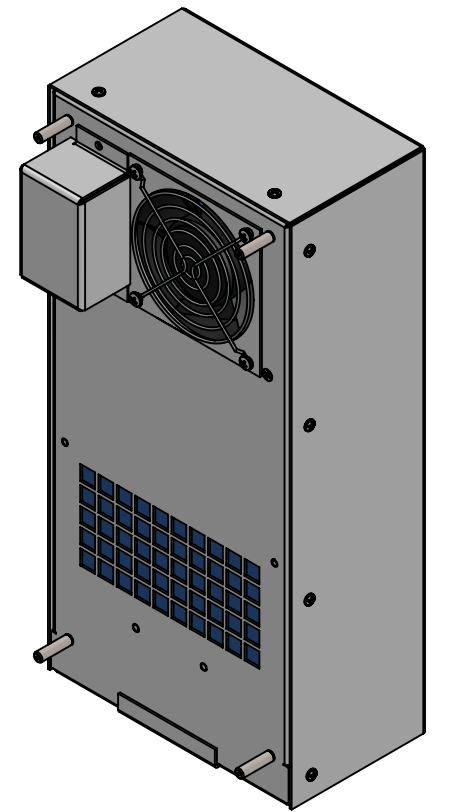
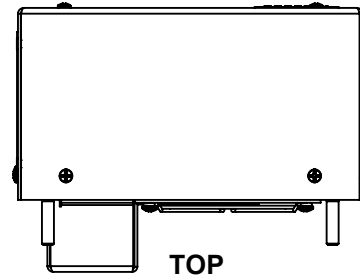
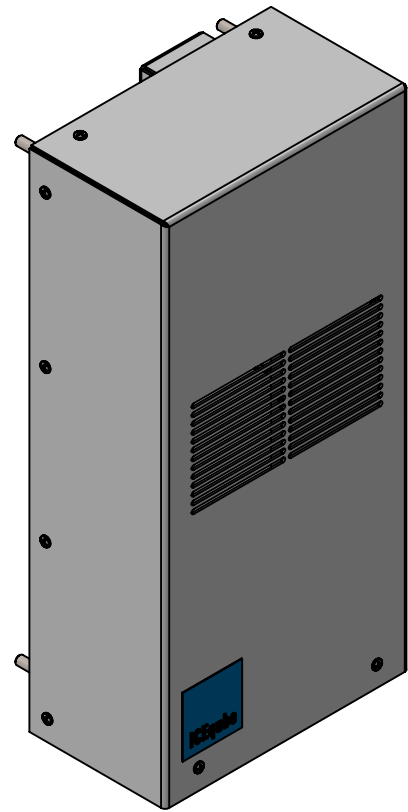


IQ700HE-Z2

CLASS I ZONE 2 AEx / Ex

ZONE 2 ATEX IECEx

CERTIFIED



AMBIENT AIR EXHAUST

POWER INPUT

AMBIENT AIR INTAKE

IQ700HE-Z2

AEx ec IIC T₁ Gc
 Ex ec IIC T₁ Gc
 II 3G Ex ec IIC T₁ Gc
 COOLING CAPACITY: 5.7 WATTS/°F @ 120/230VAC
 COOLING CAPACITY: 6.5 WATTS/°F @ 24/48VDC
 AMPS: 0.2 4A (28.8 W) @ 120VAC
 AMPS: 0.13 A (29.9 W) @ 230VAC
 AMPS: 0.70 A (16.8 W) @ 24VDC
 MAINTAINS IP66 BETWEEN EQUIPMENT AND ENCLOSURE
 OPERATING TEMPERATURE: -40° - +60°C (T CODE: T6 @ 24VDC & 120/230VAC)
 OPERATING TEMPERATURE: -40° - +70°C (T CODE: T5 @ 24VDC & 120/230VAC)
 OPERATING TEMPERATURE: -40° - +80°C (T CODE: T4 @ 120/230VAC)
 DIMENSIONS: 14.940" (380MM) H X 7.180" (183MM) W X 4.00" (102MM) D
 WEIGHT: 11.7 LBS (5.3KG)

REV	CHG	REVISION	DATE	APP	DATE	CN #
C		REMOVED 48VDC OPTION	10/10/2024			ECN-1608
B		ADDED AEx AND Ex CERTIFICATION INFORMATION, UPDATE DC AMPS .7	10/6/2021			
A		INITIAL DRAFT	1/10/2020			

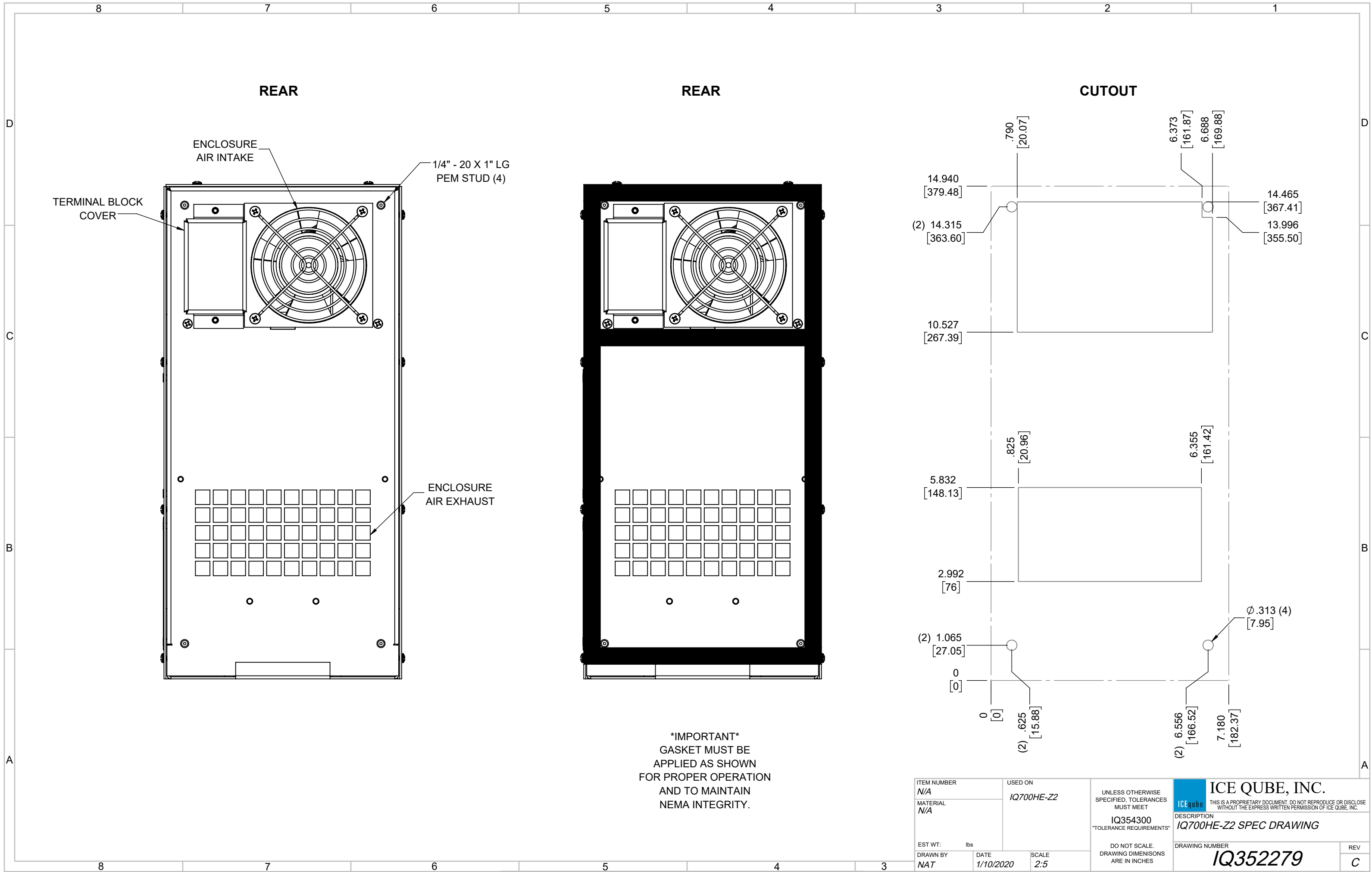
ITEM NUMBER	N/A
MATERIAL	N/A
EST WT:	lbs
DRAWN BY	NAT

USED ON	IQ700HE-Z2
DATE	1/10/2020
SCALE	1:4


UNLESS OTHERWISE SPECIFIED, TOLERANCES MUST MEET
 IQ354300
 TOLERANCE REQUIREMENTS
 DO NOT SCALE. DRAWING DIMENSIONS ARE IN INCHES

ICE QUBE, INC.
 THIS IS A PROPRIETARY DOCUMENT. DO NOT REPRODUCE OR DISCLOSE WITHOUT THE EXPRESS WRITTEN PERMISSION OF ICE QUBE, INC.

DESCRIPTION	
IQ700HE-Z2 SPEC DRAWING	
DRAWING NUMBER	REV
IQ352279	C



IMPORTANT
 GASKET MUST BE
 APPLIED AS SHOWN
 AND TO MAINTAIN
 NEMA INTEGRITY.

ITEM NUMBER <i>N/A</i>		USED ON <i>IQ700HE-Z2</i>		UNLESS OTHERWISE SPECIFIED, TOLERANCES MUST MEET	 ICE QUBE, INC. <small>THIS IS A PROPRIETARY DOCUMENT. DO NOT REPRODUCE OR DISCLOSE WITHOUT THE EXPRESS WRITTEN PERMISSION OF ICE QUBE, INC.</small>
MATERIAL <i>N/A</i>					
EST WT: lbs		SCALE 2:5		DO NOT SCALE. DRAWING DIMENSIONS ARE IN INCHES	
DRAWN BY <i>NAT</i>	DATE 1/10/2020	DRAWING NUMBER IQ352279		REV C	