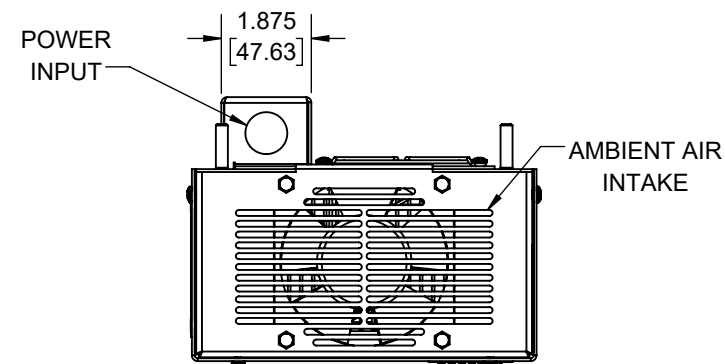
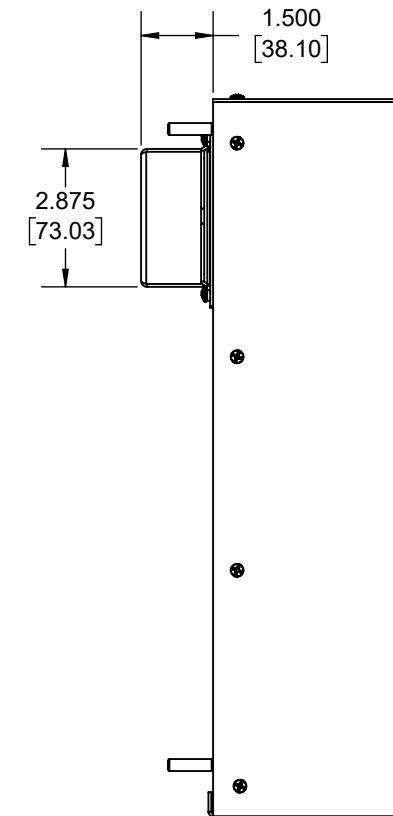
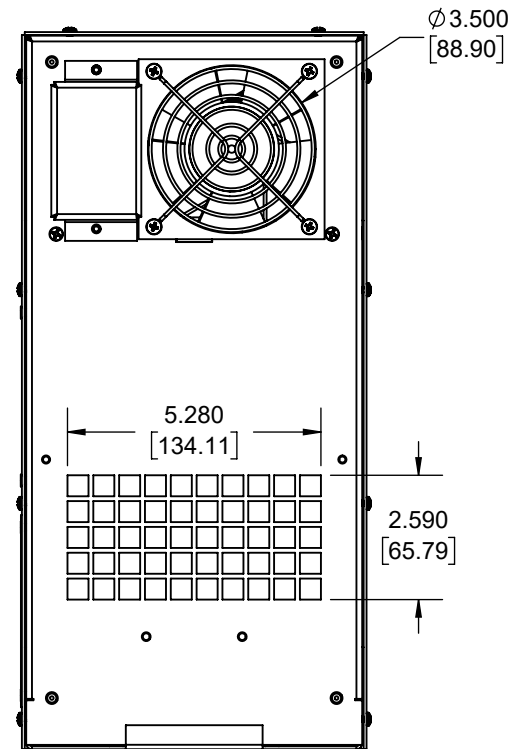
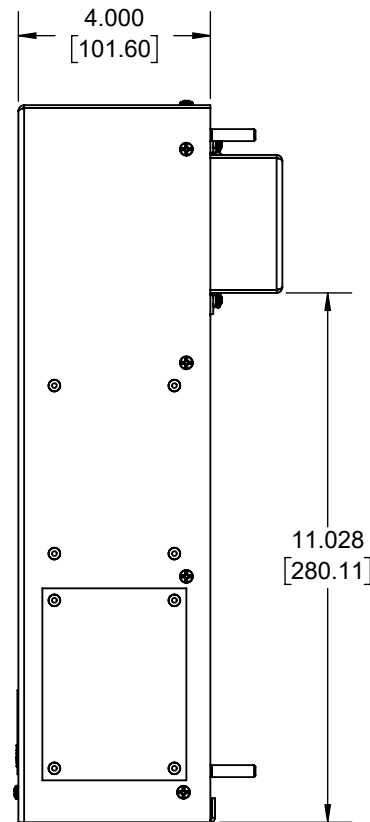
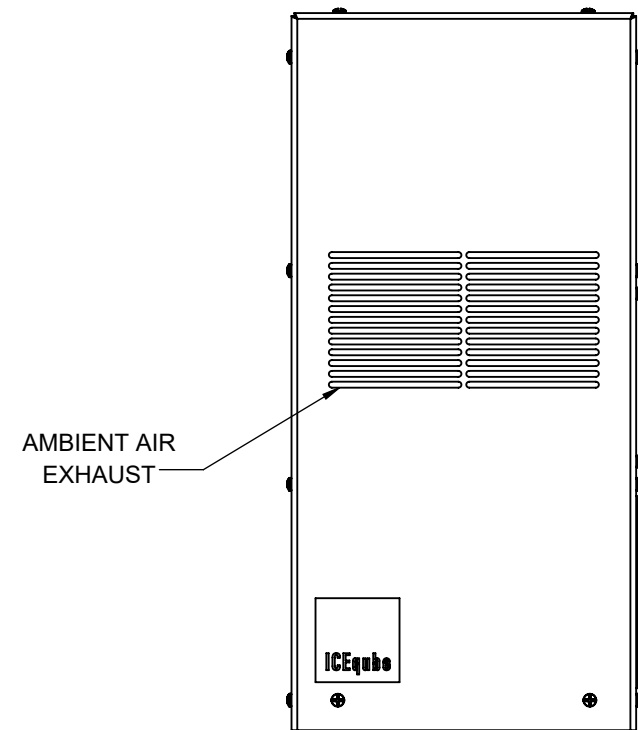
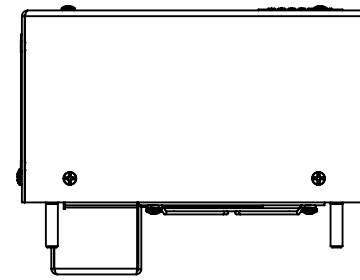
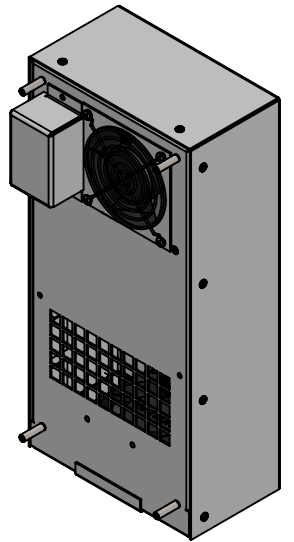
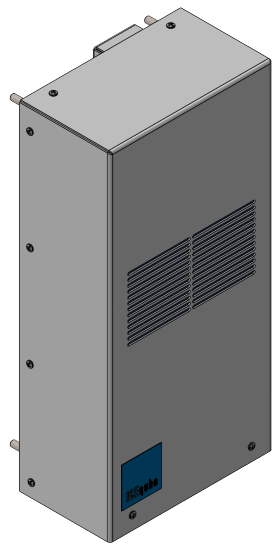


# IQ700HE-XP2

## CLASS I, DIVISION 2 CERTIFIED GROUPS A, B, C, AND D



IQ700HE-XP2  
 COOLING CAPACITY: 5.7 WATTS/°F @ 120/230VAC  
 COOLING CAPACITY: 6.5 WATTS/°F @ 24/48VDC  
 AMPS: 0.24 A (28.8 W) @ 120VAC  
 AMPS: 0.13 A (29.9 W) @ 230VAC  
 AMPS: 0.70 A (16.8 W) @ 24VDC  
 MAINTAINS IP66 BETWEEN EQUIPMENT AND ENCLOSURE  
 MAXIMUM OPERATING TEMP: 176°F (80°C)  
 DIMENSIONS: 14.940" (380MM) H X 7.180" (183MM) W X 4.00" (102MM) D  
 WEIGHT: 11.7 LBS (5.3KG)

REV	CHG	DATE	APP	DATE	CN #
C		10/10/2024			ECN-1608
B		9/9/2022			
A		1/10/2020			

ITEM NUMBER N/A	USED ON IQ700HE-XP2
MATERIAL N/A	
EST WT: lbs	
DRAWN BY NAT	DATE 1/10/2020
	SCALE 1:4

UNLESS OTHERWISE SPECIFIED, TOLERANCES MUST MEET  
 IQ354300  
 \*TOLERANCE REQUIREMENTS\*  
 DO NOT SCALE. DRAWING DIMENSIONS ARE IN INCHES

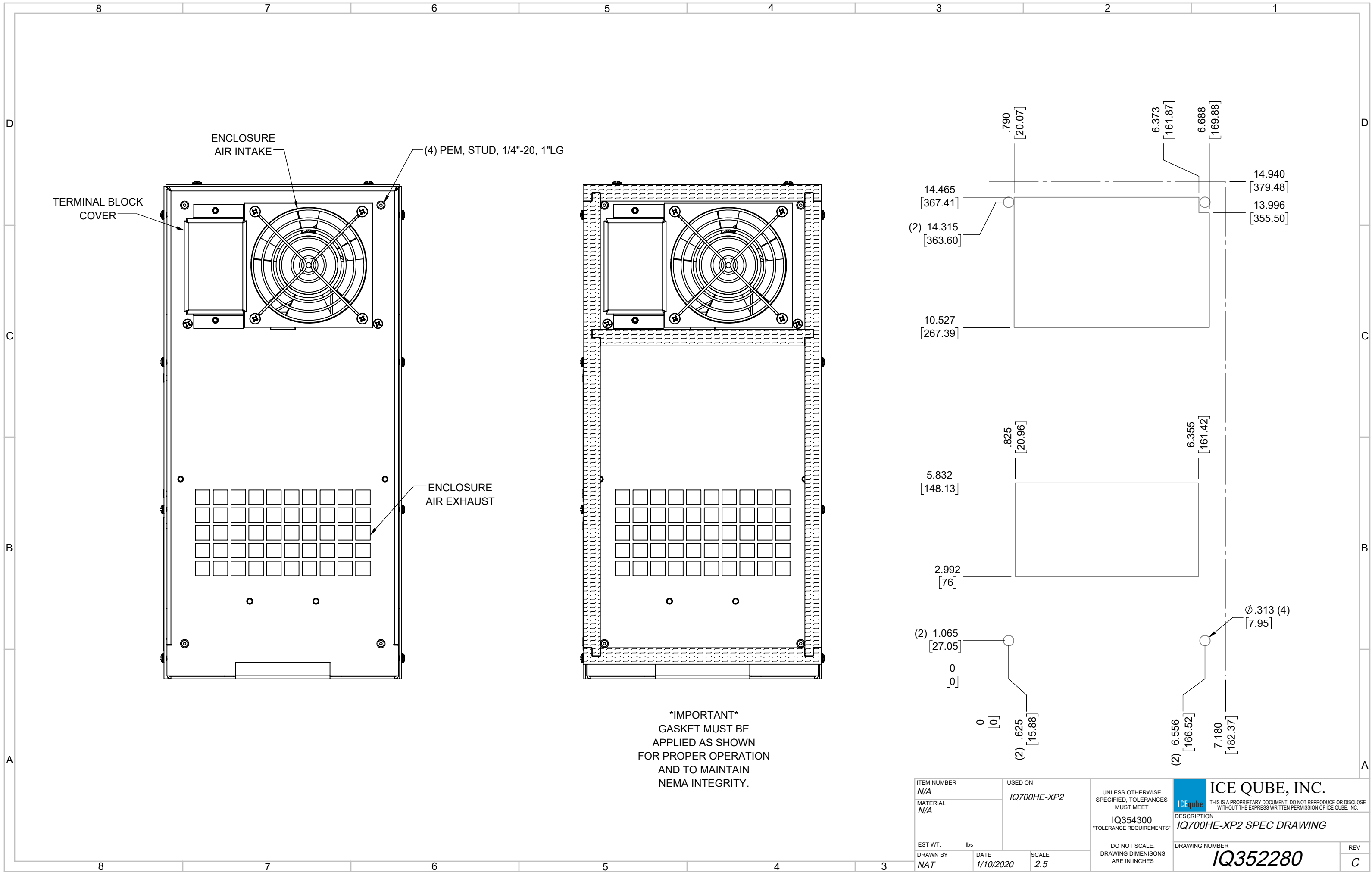
**ICE QUBE, INC.**


THIS IS A PROPRIETARY DOCUMENT. DO NOT REPRODUCE OR DISCLOSE WITHOUT THE EXPRESS WRITTEN PERMISSION OF ICE QUBE, INC.

DESCRIPTION  
**IQ700HE-XP2 SPEC DRAWING**

DRAWING NUMBER  
**IQ352280**

REV  
**C**



ITEM NUMBER <i>N/A</i>		USED ON <i>IQ700HE-XP2</i>		UNLESS OTHERWISE SPECIFIED, TOLERANCES MUST MEET		 <b>ICE QUBE, INC.</b> <small>THIS IS A PROPRIETARY DOCUMENT. DO NOT REPRODUCE OR DISCLOSE WITHOUT THE EXPRESS WRITTEN PERMISSION OF ICE QUBE, INC.</small>	
MATERIAL <i>N/A</i>				DESCRIPTION <i>IQ354300</i>		<i>IQ700HE-XP2 SPEC DRAWING</i>	
EST WT: lbs		DATE <i>1/10/2020</i>		SCALE <i>2:5</i>		DRAWING NUMBER <b>IQ352280</b>	
DRAWN BY <i>NAT</i>				DO NOT SCALE. DRAWING DIMENSIONS ARE IN INCHES		REV <b>C</b>	