

TECHNICAL DATA

ICEqube

AN AMERIQUBE COMPANY

IQ12EV pro

EV pro



DIMENSIONS	(H X W X D)	38.58 X 11.30 X 14.15 in	980 X 287 X 359 mm
	120/220/230V	116 lbs	52.6 kg
WEIGHT	400/480V	140.5 lbs	63.7 kg
	A95°F/95°F (A35°C/35°C)	11500 BTUH	3370 W
COOLING CAPACITY ₁	A140°F/140°F (A60°C/60°C)	12250 BTUH	3590 W
	(BTUH / W)	3412/6824 BTUH	1000/2000 W
HEATING CAPACITY ₂			
REFRIGERANT CHARGE	R407C@ 120V	43 oz	1219 g
	R407C@ 220/230/400/480V	41 oz	1162 g
AMBIENT TEMPERATURE RANGE	(°F/°C)	-40°F TO 140°F	-40°C TO 60°C
AIR VOLUME, CONDENSER OUTLET ₃	(ft ³ /min/m ³ /h)	892 ft ³ /min	1516 m ³ /h
AIR VOLUME, EVAPORATOR OUTLET ₃		600 ft ³ /min	1019 m ³ /h
NOISE LEVEL ₄	68 dBA	5 ft AWAY + 3 ft HIGH	1.52 m AWAY + 0.91 m HIGH
	70 dBA	2 ft AWAY + 5 ft HIGH	0.61 m AWAY + 1.52 m HIGH
AMBIENT FILTER ₂			
UNIT CONSTRUCTION	WELDED FRAME	316L STAINLESS STEEL -OR- POWDER COATED GALVANIZED	
FINISH ₂		316L STAINLESS STEEL GRAINED FINISH	
		STANDARD POWDER COATED COLORS GRAY -OR- BEIGE	
		CUSTOMER SPECIFIED POWDER COATED COLOR	
CORROSION PROTECTION ₂	HARSH ENVIRONMENT PROTECTION (CP3)		
CONDENSATION MANAGEMENT	EVAPORATION TRAY	STAINLESS STEEL WITH OVERFLOW CONNECTOR	
PROTECTION CLASSIFICATION ₅		IP66 / NEMA TYPE 12 / 3R / 4 / 4X	
CERTIFICATIONS		*NOTE: DOUBLE CLICK LINK TO BE RE-DIRECTED TO WEB-PAGE https://iceqube.com/technical/certifications/	

FOOTNOTES

1. See performance curves for more details.
2. See features and options page for additional information.
3. Zero static pressure with free air flow at 60Hz. Tolerance is ±10% ft³/min/m³/h.
4. Results may vary depending on environment.
5. Protection classifications may not apply to all units, as certifications vary and are not standard across all units.

ELECTRICAL DATA

VOLTAGE	VOLTAGE TOLERANCE ¹	FREQUENCY	FREQUENCY TOLERANCE	NOMINAL POWER CONSUMPTION	NOMINAL RUNNING CURRENT	INTERNAL HEAT OPTIONS	MINIMUM CIRCUIT AMPACITY	MAXIMUM OVER-CURRENT PROTECTION	SCCR ₂	CIRCUIT PROTECTION
120 V	±10%	60 Hz	±3 Hz	2412 W	20.10 A	1000 W 2000 W	15.49 A 22.06 A	35 A 45 A	5kA	USE TIME DELAY FUSE OR TIME DELAY CIRCUIT BREAKER
220–230 V	+10%	50/60 Hz	±3 Hz	2266/2369 W	10.30 A	1000 W 2000 W	11.13/6.60 A 11.99/11.49 A	25/20 A 30/20 A	5kA	USE TIME DELAY FUSE OR TIME DELAY CIRCUIT BREAKER
400 V	±10%	50/60 Hz	±3 Hz	2088/2084 W	5.22/5.21 A	1000 W 2000 W	11.13/6.60 A 11.13/6.88 A	25/15 A 25/20 A	5kA	USE TIME DELAY FUSE OR TIME DELAY CIRCUIT BREAKER
480 V	±10%	50/60 Hz	±3 Hz	2448/2443 W	5.10/5.09 A	1000 W 2000 W	11.13/6.60 A 11.13/6.60 A	25/15 A 25/15 A	5kA	USE TIME DELAY FUSE OR TIME DELAY CIRCUIT BREAKER

THERMAL CONTROL SETTINGS

FACTORY COOLING SYSTEM ON TEMPERATURE	80°F	26°C
FACTORY HEATING SYSTEM ON TEMPERATURE	50°F	10°C
FACTORY HIGH ENCLOSURE TEMPERATURE ALARM	131°F	60°C
FACTORY LOW ENCLOSURE TEMPERATURE ALARM	-20°F	-29°C
FACTORY HIGH CONDENSER TEMPERATURE ALARM	170°F	76°C
COOLING SYSTEM ON TEMPERATURE RANGE	70°F–124°F	21°C–52°C
HEATING SYSTEM ON TEMPERATURE RANGE	-4°F–63°F	-17°C–17°C

FOOTNOTES

1. For 220-230V units minimum operating voltage is 208V.
2. Depending on the application, a higher SCCR rating could be achieved. Ask your certifying body.

AN AMERIQube COMPANY

FEATURES AND OPTIONS

STRUCTURE: IQ-V-F-N-CP-XO-IH-AF-CTR-O-W

EXAMPLE CONFIGURATION: IQ MODEL-120V-GY-N4-CP3-X03-IH10-10FIL-STDF-TEMP-1YEAR

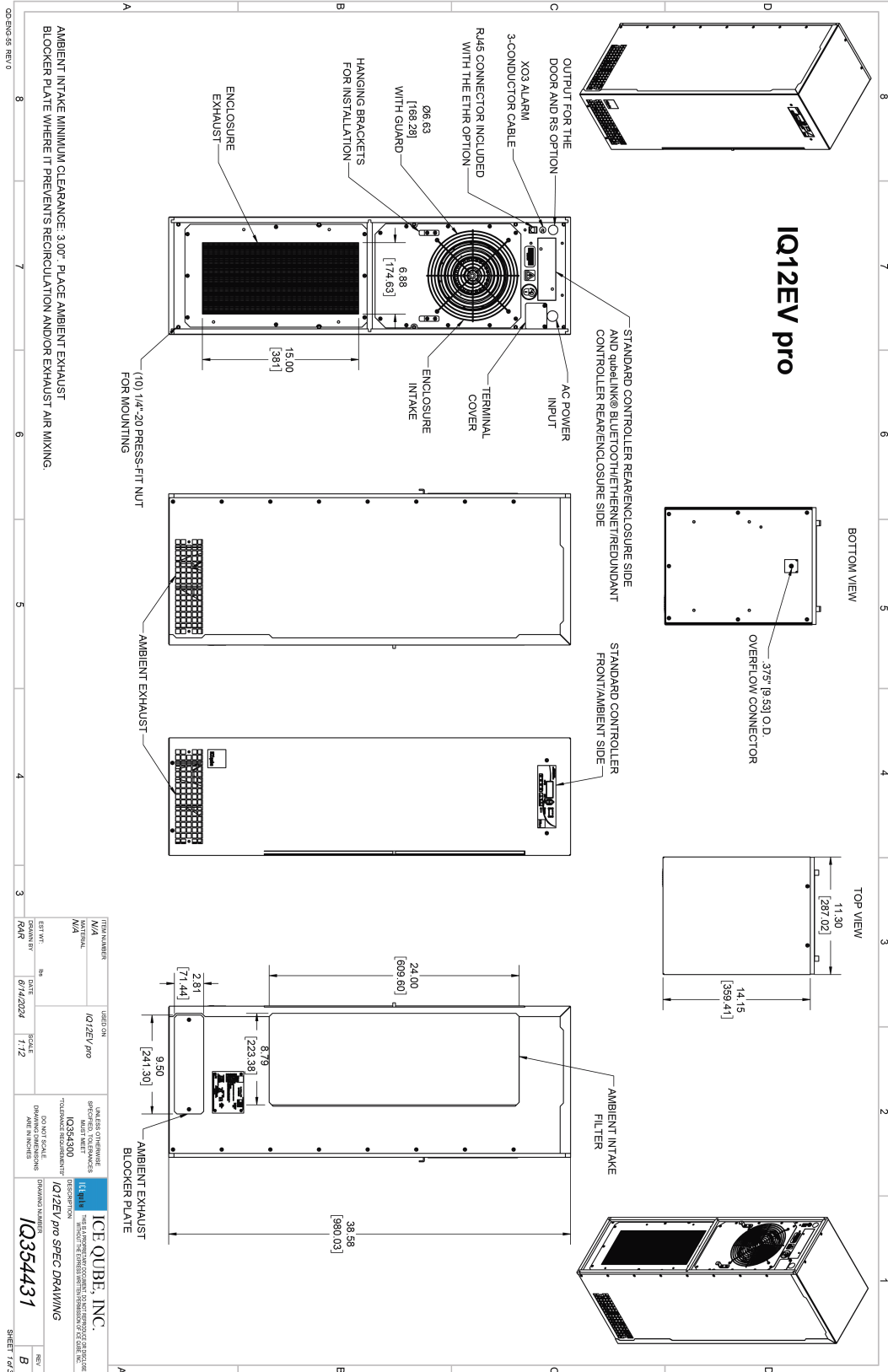
(IQ MODEL WITH 120 VOLT, GRAY FINISH, NEMA TYPE 4, CORROSION PROTECTION, ALARM OUTPUT, INTERNALLY MOUNTED 1000 WATT HEATER, A 10-MICRON FILTER, A STANDARD CONTROLLER FRONT/AMBIENT SIDE, FULL SCALE ENCLOSURE CUTOUT DRAWING TEMPLATE, AND 1 YEAR STANDARD WARRANTY.)

PART NUMBER KEY	
IQ	IQ MODEL
V	VOLTAGE
F	FINISH
N	NEMA TYPE/IP CLASSIFICATION
CP	CORROSION PROTECTION
XO	ALARM OUTPUT
IH	INTERNAL HEAT
AF	AMBIENT FILTER
CTR	CONTROLLER
O	OPTIONS
W	WARRANTY
(V) VOLTAGES ₁	
120 V	60 HERTZ
220-230 V	50/60 HERTZ
400 V	50/60 HERTZ
480 V	50/60 HERTZ
(F) FINISH ₁	
GY	GRAY, POWDER COATED GALVANIZED STEEL
BG	BEIGE, POWDER COATED GALVANIZED STEEL
CM	CUSTOM COLOR, POWDER COATED GALVANIZED STEEL
C316	CUSTOM COLOR, POWDER COATED 316L STAINLESS STEEL
S316	GRAINED FINISH, 316L STAINLESS STEEL
(N) NEMA TYPE/IP CLASSIFICATION	
N4	NEMA TYPE 3R/4 /12/IP66; ONLY FOR UNITS WITH A UNIT CONSTRUCTION OF WELDED FRAME, POWDER COATED GALVANIZED STEEL.
N4X	NEMA TYPE 3R /4X /IP66; ONLY FOR UNITS WITH UNIT CONSTRUCTION OF WELDED FRAME, 316L STAINLESS STEEL WITH C316 OR S316 FINISH.
UNIT CONSTRUCTION ₂	
	WELDED FRAME, POWDER COATED GALVANIZED STEEL
	WELDED FRAME, 316L STAINLESS STEEL
(CP) CORROSION PROTECTION	
CP3	HARSH ENVIRONMENT PROTECTION AGAINST GAS, SALT SPRAY, AND MOISTURE. HIGH FREQUENCY COATED COILS, ALL BRAZED JOINTS AND COPPER TUBING COATED.
(XO) ALARM OUTPUT	
X03	ALARM OUTPUT THAT PROVIDES BOTH A NORMALLY OPEN (CLOSED ON ALARM) AND A NORMALLY CLOSED (OPEN ON ALARM) SET OF DRY CONTACTS. THIS SIGNAL IS PROVIDED FROM A RELAY THROUGH A 3-CONDUCTOR CABLE.

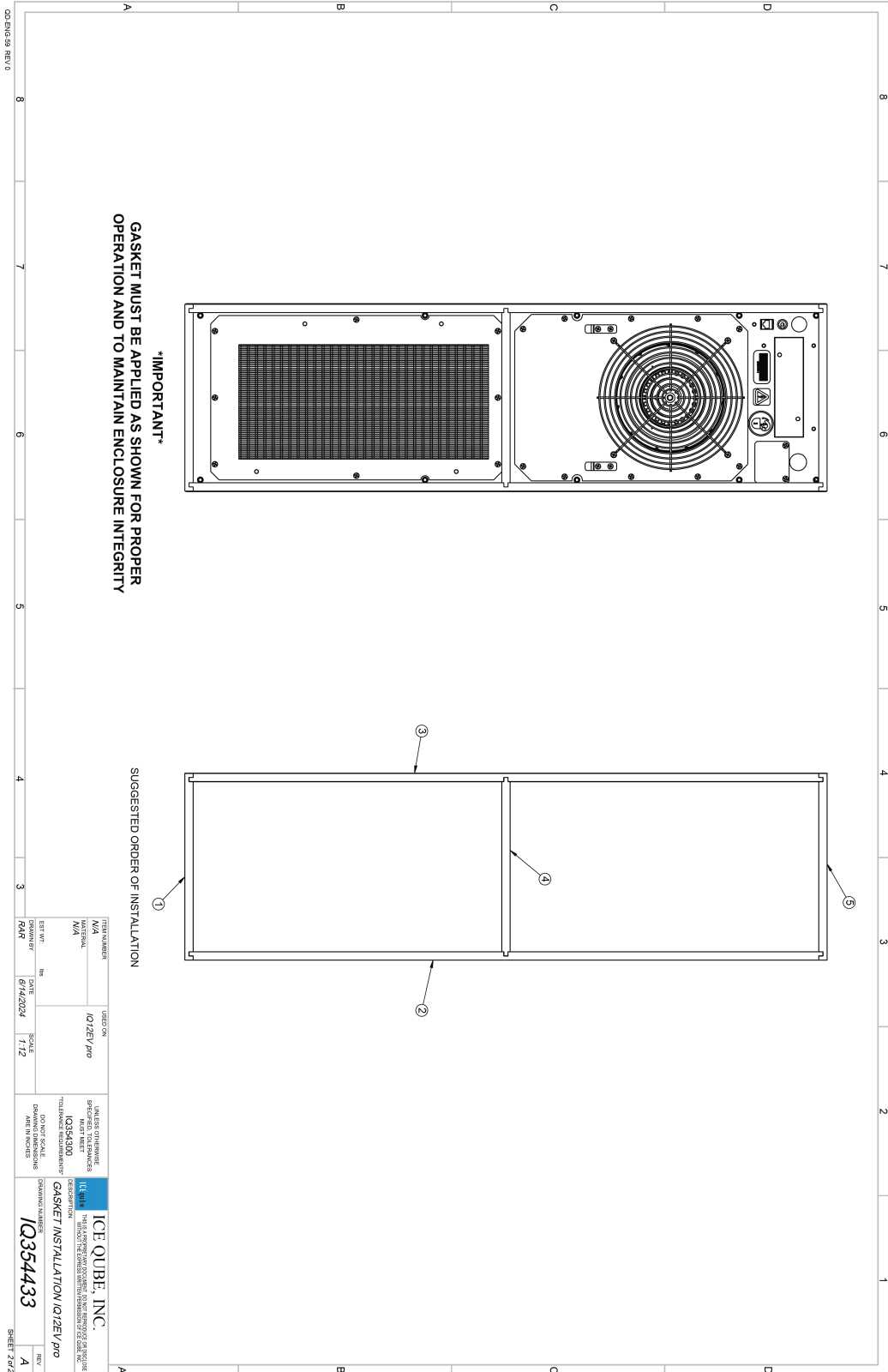
(IH) INTERNAL HEAT ₁	
IH10	INTERNALLY MOUNTED 1000 W HEATER. PROVIDES HEAT WHEN REQUIRED. THE CONTROLLER HAS BUILT IN DEAD BAND PROGRAM THAT PREVENTS HEATING AND COOLING FROM OPERATING SIMULTANEOUSLY.
IH20	INTERNALLY MOUNTED 2000 W HEATER. PROVIDES HEAT WHEN REQUIRED. THE CONTROLLER HAS BUILT IN DEAD BAND PROGRAM THAT PREVENTS HEATING AND COOLING FROM OPERATING SIMULTANEOUSLY.
(AF) AMBIENT FILTER ₁	
10FIL	10-MICRON FILTER
4FIL	4-MICRON FILTER
DEFL	DUST EATER FILTER
(CTR) CONTROLLER ₁	
STDF	STANDARD CONTROLLER FRONT/AMBIENT SIDE
STDR	STANDARD CONTROLLER REAR/ENCLOSURE SIDE
XC	STANDARD CONTROLLER REMOTE MOUNTED (EXTERNAL TO UNIT)
ETHR	qubeLINK® BLUETOOTH/ETHERNET/REDUNDANT CONTROLLER REAR/ENCLOSURE SIDE
(O) OPTIONS	
CNV	CONVERSION COLLAR FOR ADAPTING EXISTING ENCLOSURE CUTOUTS FROM OTHER ICEqube UNITS TO THE EV pro.
HOOD	AMBIENT EXHAUST HOODS FOR AIR DIRECTION, SECURITY, AND/OR WASHDOWN ENVIRONMENT. AVAILABLE IN ALL FINISHES.
EHO	EXTERNAL HEAT OUTPUT TO POWER AND CONTROL ADDITIONAL EXTERNAL HEATER (CAN'T BE PAIRED WITH STDR OR ETHR CONTROLLERS).
LA	LOW AMBIENT PACKAGE FOR LOW AMBIENT ENVIRONMENTS.
TEMP	FULL SCALE ENCLOSURE CUTOUT DRAWING TEMPLATE.
DOOR	ENCLOSURE DOOR SWITCH INTERFACE FOR CONNECTING AC TO DOOR SWITCHES.
RS	EXTRA-LONG ENCLOSURE TEMPERATURE SENSOR WIRE FOR MOUNTING EXTERNAL TO THE UNIT.
PWRC	POWER CORD SUPPLIED INSTEAD OF STANDARD OPTION OF HARD WIRING TO TERMINAL BOX.
(W) WARRANTY	
1 YEAR	STANDARD WARRANTY

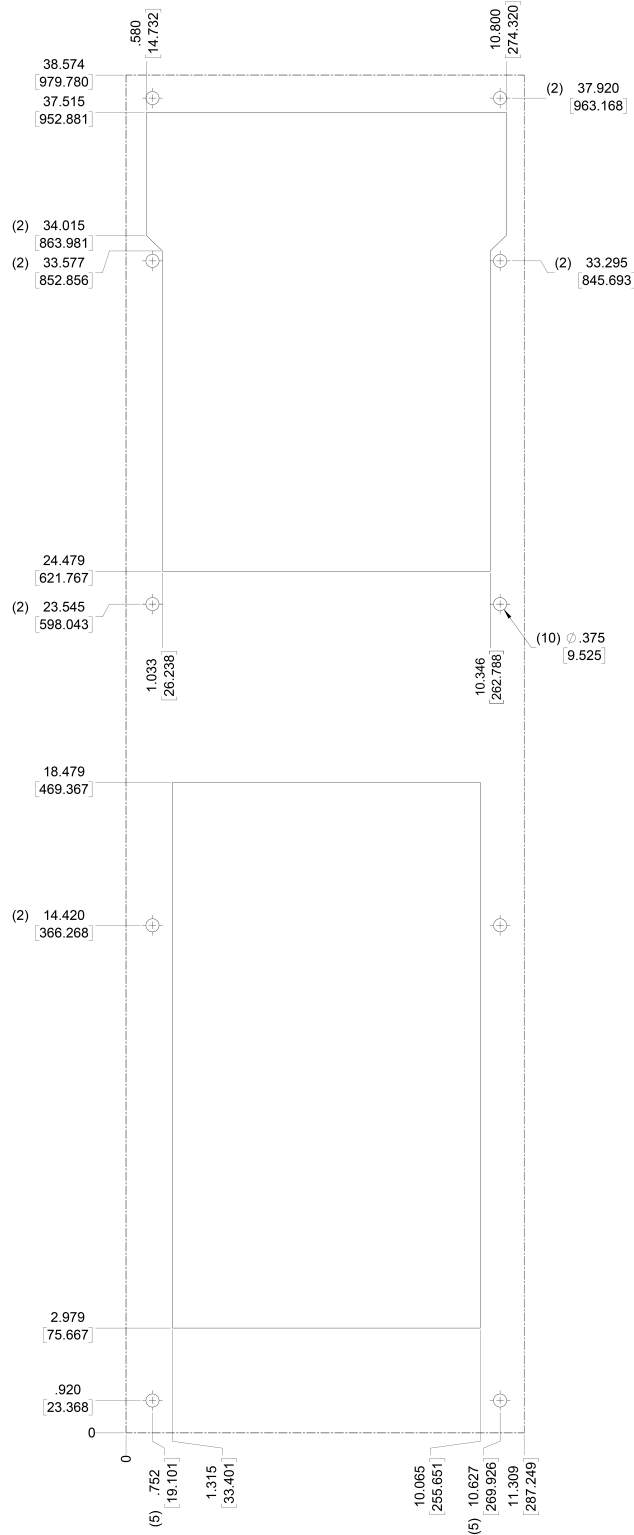
FOOTNOTES

1. Must choose one from category.
2. Unit construction is paired to finish and NEMA Type/IP classification.



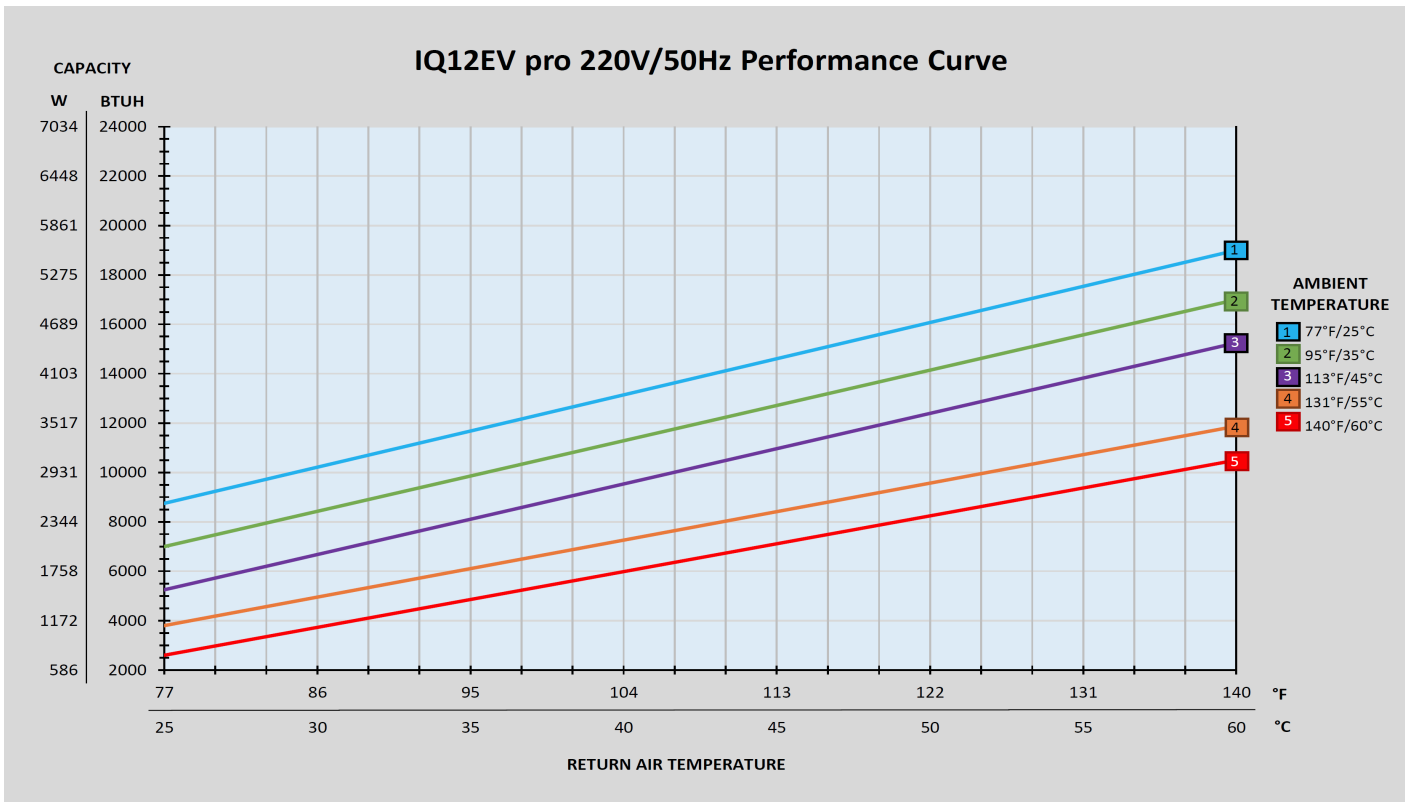
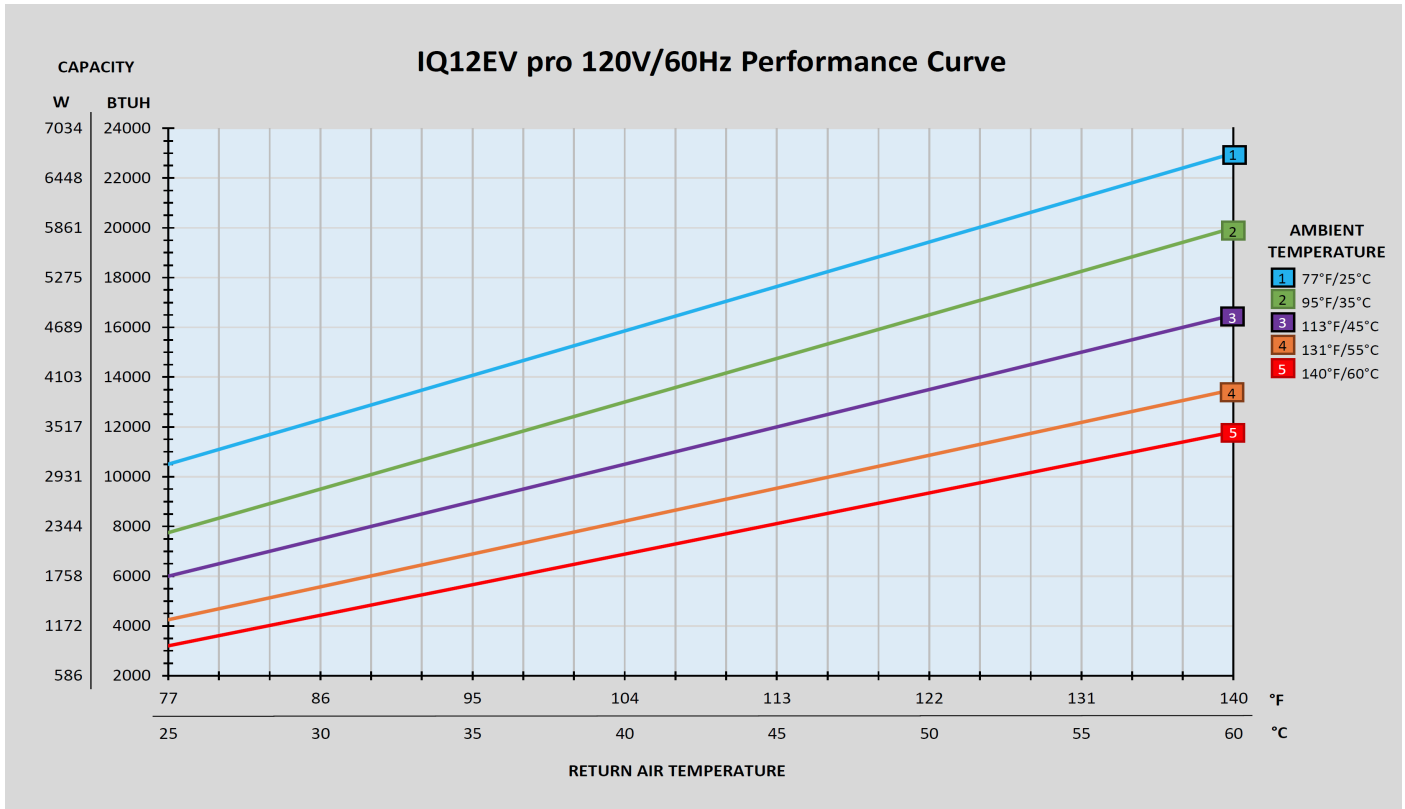
ITEM NUMBER	M/A	ISSUE ON	LINE SIZE OR DIMENSION	FILE #	ICE QUBE, INC.
M/A	M/A	IQ12EV pro	SPECIFIED TOLERANCES	12.14	12.14
M/A	M/A		UNLESS OTHERWISE SPECIFIED, TOLERANCES	ISO 2875	ISO 2875
			DRAWING REQUIREMENTS	ISO 2875	ISO 2875
			DO NOT SCALE	ISO 2875	ISO 2875
			DATE	6/14/2024	6/14/2024
			SCALE	1:12	1:12
			DRAWING NUMBER	IQ354431	IQ354431
			SHEET # OF 3	B	B





RELATED DRAWING; DO NOT CHANGE WITHOUT AUTHORIZED PERSON APPROVAL
 DRAWING NUMBER: IQ351079 REV: C IQ8-10-12EV/IQ12EV pro CUTOUT (TEMP1109)
 VERIFY DIMENSIONS BEFORE CUTTING

AN AMERIQUBE COMPANY



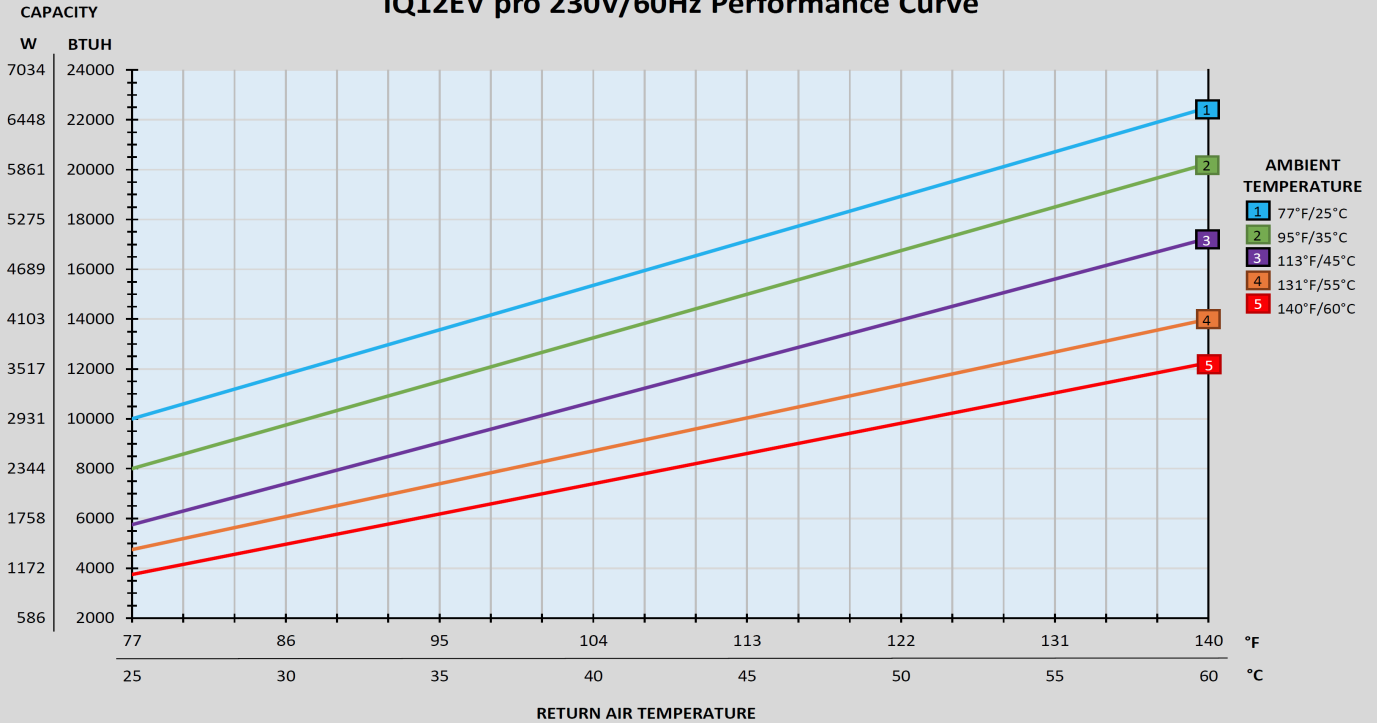
TECHNICAL DATA

ICEqube

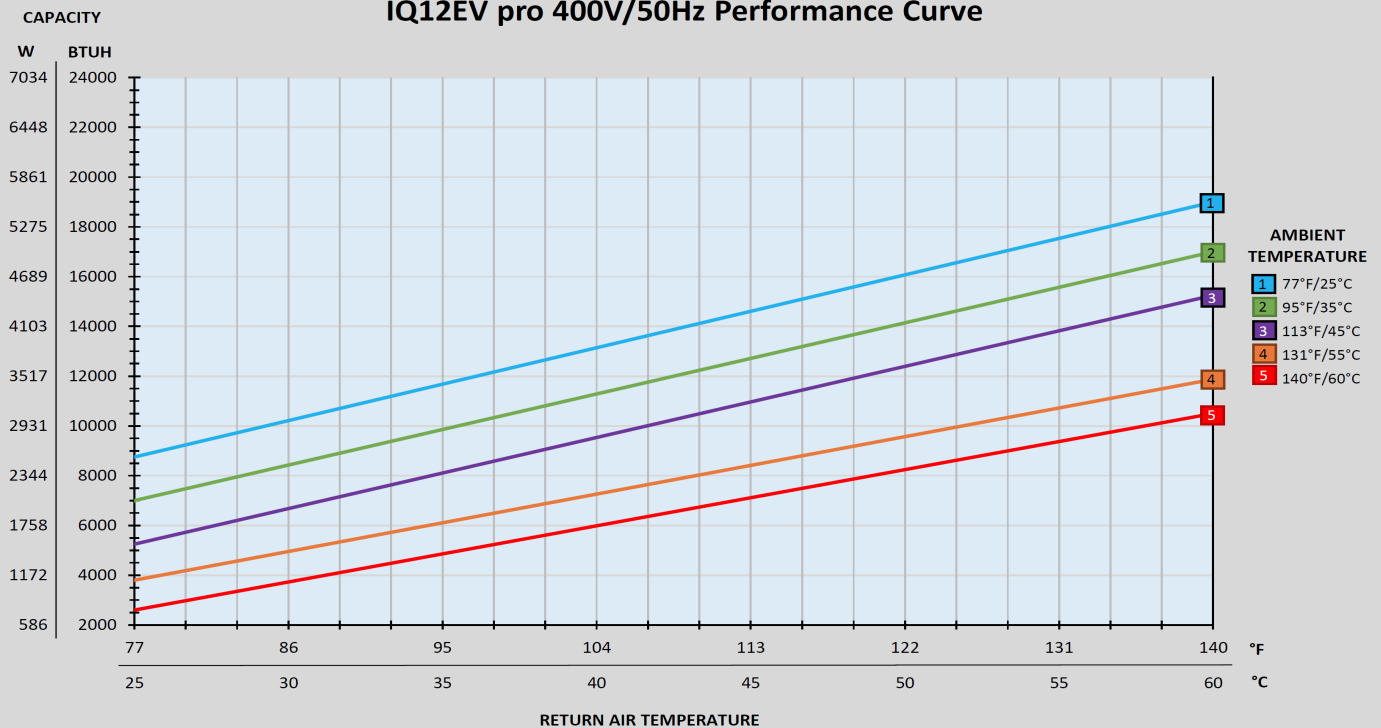
IQ12EV pro

AN AMERIQube COMPANY

IQ12EV pro 230V/60Hz Performance Curve



IQ12EV pro 400V/50Hz Performance Curve

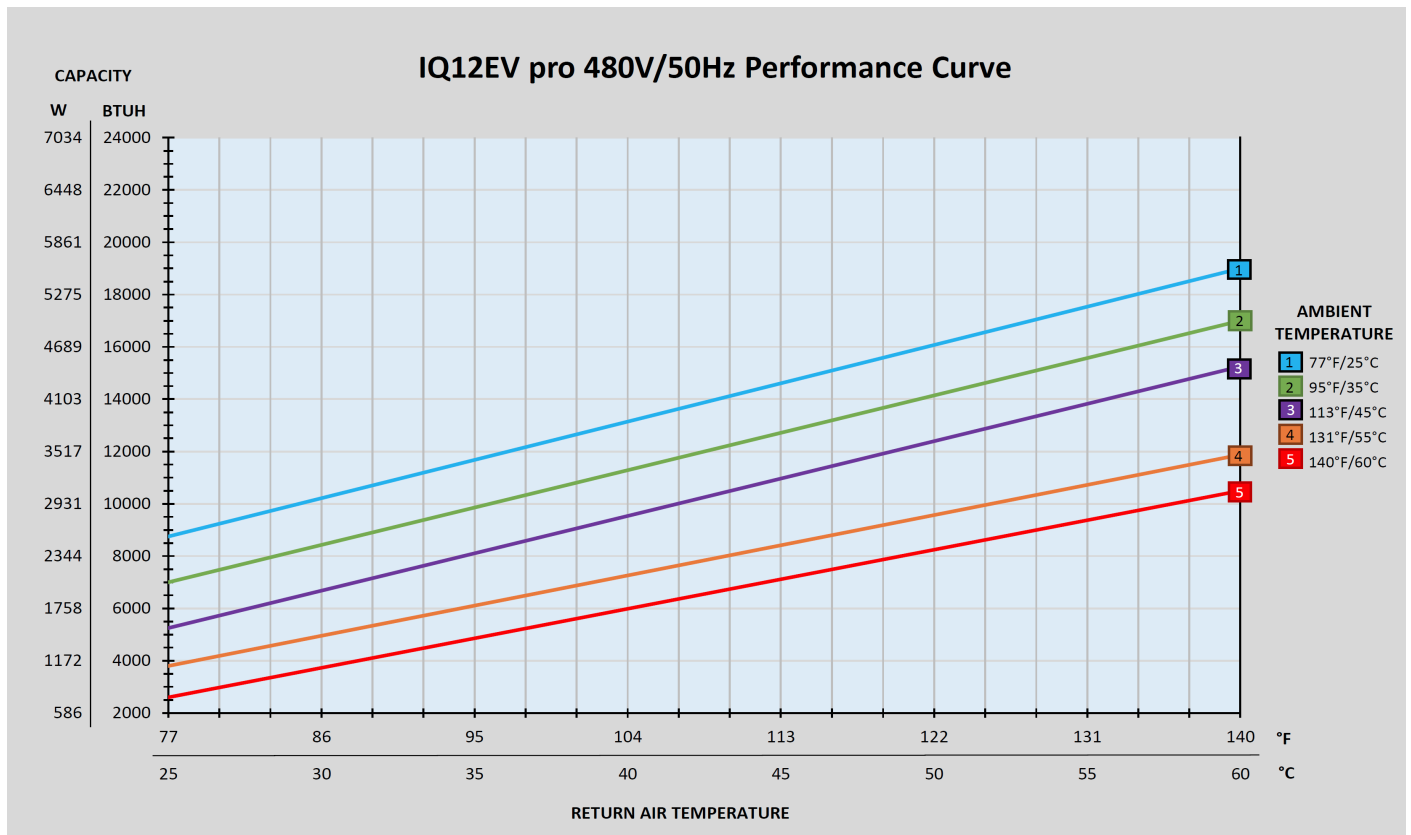
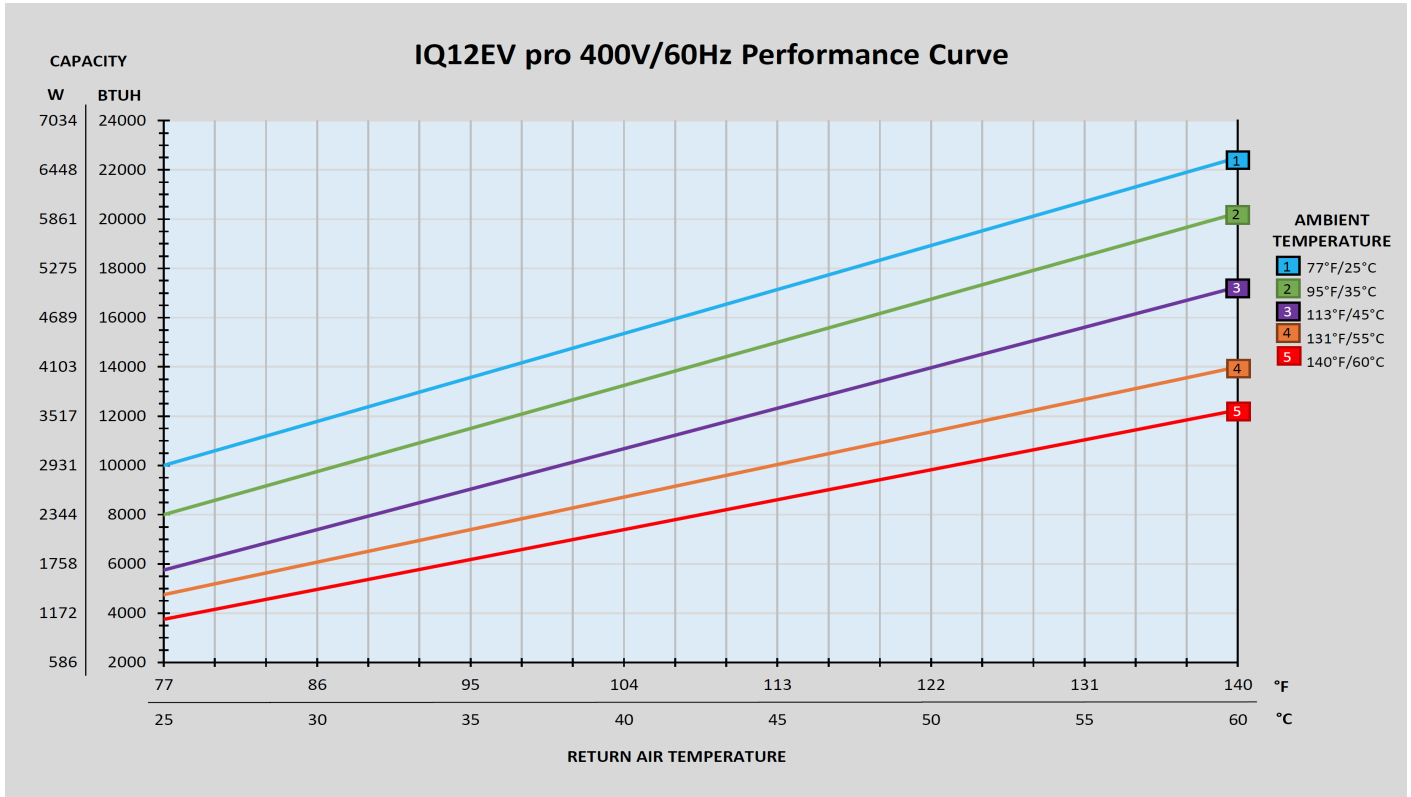


TECHNICAL DATA

ICEqube

IQ12EV pro

AN AMERIQube COMPANY



TECHNICAL DATA

ICEqube

IQ12EV pro

AN AMERIQube COMPANY

