

AN AMERIQube COMPANY

EV pro



DIMENSIONS	(H X W X D)	20.12 X 9.85 X 11.00 in	511 X 250 X 279 mm
WEIGHT	120/220/230V	49 lbs	22.2 kg
	400/480V	65.5 lbs	29.7 kg
COOLING CAPACITY₁	A95°F/95°F (A35°C/35°C)	2743 BTUH	804 W
	A140°F/140°F (A60°C/60°C)	2400 BTUH	703 W
HEATING CAPACITY	(BTUH/W)	1706 BTUH	500 W
REFRIGERANT CHARGE	R134a	10 oz	283.5 g
AMBIENT TEMPERATURE RANGE	(°F / °C)	-40°F TO 140°F	-40°C TO 60°C
AIR VOLUME, CONDENSER OUTLET₂	(ft ³ /min/m ³ /h)	350 ft ³ /min	595 m ³ /h
AIR VOLUME, EVAPORATOR OUTLET₂		182 ft ³ /min	309 m ³ /h
NOISE LEVEL₃	64 dBA	5 ft AWAY + 3 ft HIGH	1.52 m AWAY + 0.91 m HIGH
	68 dBA	2 ft AWAY + 5 ft HIGH	0.61 m AWAY + 1.52 m HIGH
AMBIENT FILTER₄	10-MICRON		
UNIT CONSTRUCTION	WELDED FRAME		316L STAINLESS STEEL -OR- POWDER COATED GALVANIZED
	316L STAINLESS STEEL GRAINED FINISH		
FINISH₄	STANDARD POWDER COATED COLORS		GRAY -OR- BEIGE
	CUSTOMER SPECIFIED POWDER COATED COLOR		
CORROSION PROTECTION₄	HARSH ENVIRONMENT PROTECTION (CP3)		
CONDENSATION MANAGEMENT	EVAPORATION TRAY		STAINLESS STEEL WITH OVERFLOW CONNECTOR
PROTECTION CLASSIFICATION₅	IP66 / NEMA TYPE 12 / 3R / 4 / 4X		
CERTIFICATIONS	*NOTE: DOUBLE CLICK LINK TO BE RE-DIRECTED TO WEB-PAGE		https://iceqube.com/technical/certifications/

FOOTNOTES

1. See performance curves for more details.
2. Zero static pressure with free air flow at 60Hz. Tolerance is ±10% ft³/min/m³/h.
3. Results may vary depending on environment.
4. See features and options page for additional information.
5. Protection classifications may not apply to all units, as certifications vary and are not standard across all units.

ELECTRICAL DATA

VOLTAGE	VOLTAGE TOLERANCE ₁	FREQUENCY	FREQUENCY TOLERANCE	NOMINAL POWER CONSUMPTION	NOMINAL RUNNING CURRENT	INTERNAL HEAT OPTIONS	MINIMUM CIRCUIT AMPACITY	MAXIMUM OVER-CURRENT PROTECTION	SCCR ₂	CIRCUIT PROTECTION
120 V	±10%	60 Hz	±3 Hz	648 W	5.40 A	500 W	5.75 A	15 A	5kA	USE TIME DELAY FUSE OR TIME DELAY CIRCUIT BREAKER
220–230 V	+10%	50/60 Hz	±3 Hz	625/623 W	2.84/2.71 A	500 W	3.14/2.98 A	15 A	5kA	USE TIME DELAY FUSE OR TIME DELAY CIRCUIT BREAKER
400 V	±10%	50/60 Hz	±3 Hz	572/396 W	1.43/0.99 A	500 W	1.86/1.83 A	15 A	5kA	USE TIME DELAY FUSE OR TIME DELAY CIRCUIT BREAKER
480 V	±10%	50/60 Hz	±3 Hz	370/360 W	0.77/0.75 A	500 W	1.60/1.56 A	15 A	5kA	USE TIME DELAY FUSE OR TIME DELAY CIRCUIT BREAKER

THERMAL CONTROL SETTINGS

FACTORY COOLING SYSTEM ON TEMPERATURE	80°F	26°C
FACTORY HEATING SYSTEM ON TEMPERATURE	50°F	10°C
FACTORY HIGH ENCLOSURE TEMPERATURE ALARM	131°F	60°C
FACTORY LOW ENCLOSURE TEMPERATURE ALARM	-20°F	-29°C
FACTORY HIGH CONDENSER TEMPERATURE ALARM	170°F	76°C
COOLING SYSTEM ON TEMPERATURE RANGE	70°F–124°F	21°C–52°C
HEATING SYSTEM ON TEMPERATURE RANGE	-4°F–63°F	-17°C–17°C

FOOTNOTES

1. For 220-230V units minimum operating voltage is 208V.
2. Depending on the application, a higher SCCR rating could be achieved. Ask your certifying body.

FEATURES AND OPTIONS

STRUCTURE: IQ-V-F-N-CP-XO-IH-AF-CTR-O-W

EXAMPLE CONFIGURATION: IQ MODEL-120V-GY-N4-CP3-X03-IH5-10FIL-STDF-TEMP-1YEAR

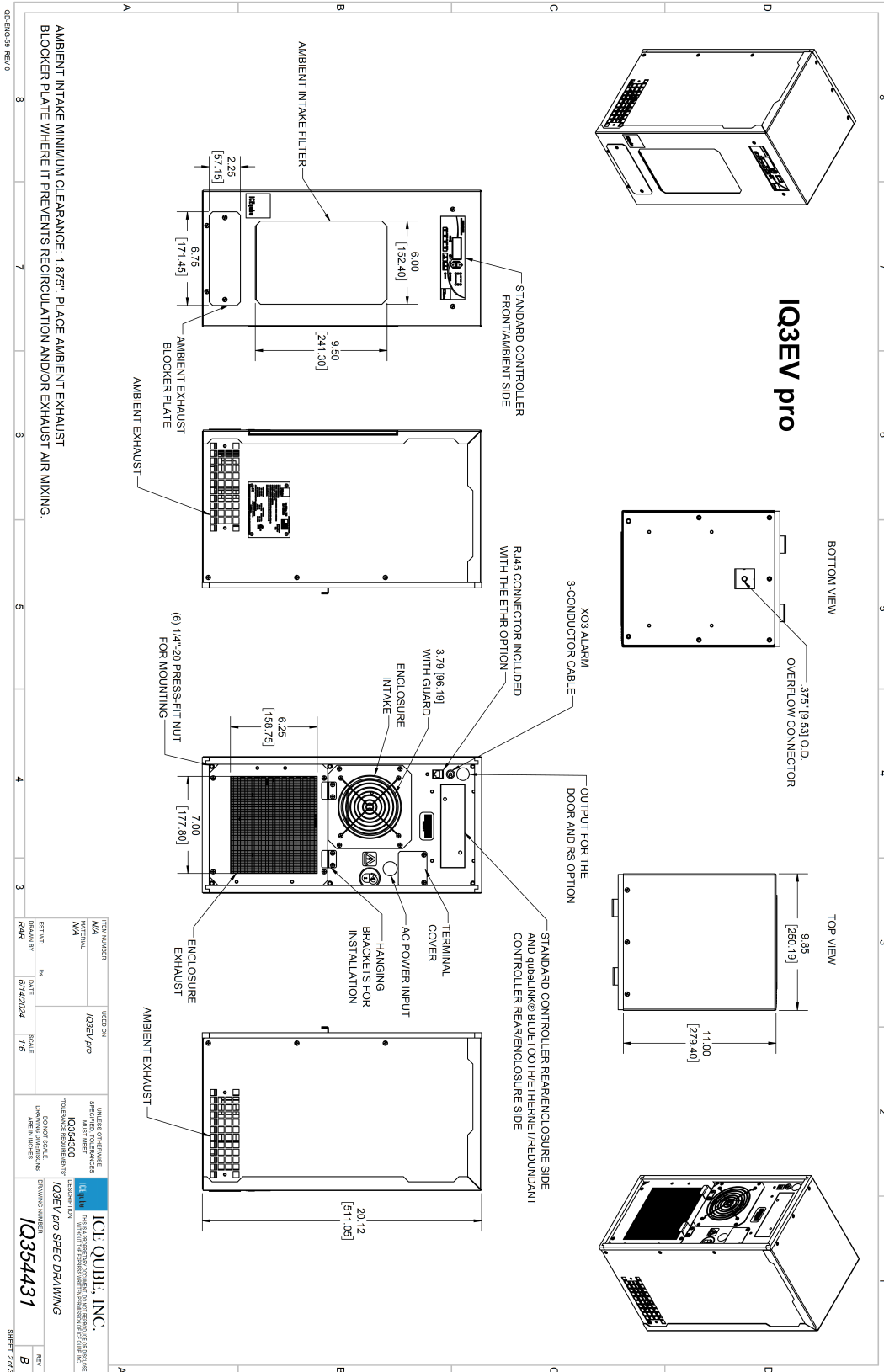
(IQ MODEL WITH 120 VOLT, GRAY FINISH, NEMA TYPE 4, CORROSION PROTECTION, ALARM OUTPUT, INTERNALLY MOUNTED 500 WATT HEATER, A 10-MICRON FILTER, A STANDARD CONTROLLER FRONT/AMBIENT SIDE, FULL SCALE ENCLOSURE CUTOOUT DRAWING TEMPLATE, AND 1 YEAR STANDARD WARRANTY.)

PART NUMBER KEY	
IQ	IQ MODEL
V	VOLTAGE
F	FINISH
N	NEMA TYPE/IP CLASSIFICATION
CP	CORROSION PROTECTION
XO	ALARM OUTPUT
IH	INTERNAL HEAT
AF	AMBIENT FILTER
CTR	CONTROLLER
O	OPTIONS
W	WARRANTY
(V) VOLTAGES ₁	
120 V	60 HERTZ
220–230 V	50/60 HERTZ
400 V	50/60 HERTZ
480 V	50/60 HERTZ
(F) FINISH ₁	
GY	GRAY, POWDER COATED GALVANIZED STEEL
BG	BEIGE, POWDER COATED GALVANIZED STEEL
CM	CUSTOM COLOR, POWDER COATED GALVANIZED STEEL
C316	CUSTOM COLOR, POWDER COATED 316L STAINLESS STEEL
S316	GRAINED FINISH, 316L STAINLESS STEEL
(N) NEMA TYPE/IP CLASSIFICATION	
N4	NEMA TYPE 3R/4 /12/IP66; ONLY FOR UNITS WITH A UNIT CONSTRUCTION OF WELDED FRAME, POWDER COATED GALVANIZED STEEL.
N4X	NEMA TYPE 3R /4X /IP66; ONLY FOR UNITS WITH UNIT CONSTRUCTION OF WELDED FRAME, 316L STAINLESS STEEL WITH C316 OR S316 FINISH.
UNIT CONSTRUCTION ₂	
	WELDED FRAME, POWDER COATED GALVANIZED STEEL
	WELDED FRAME, 316L STAINLESS STEEL
(CP) CORROSION PROTECTION	
CP3	HARSH ENVIRONMENT PROTECTION AGAINST GAS, SALT SPRAY, AND MOISTURE. HIGH FREQUENCY COATED COILS, ALL BRAZED JOINTS AND COPPER TUBING COATED.

(XO) ALARM OUTPUT	
X03	ALARM OUTPUT THAT PROVIDES BOTH A NORMALLY OPEN (CLOSED ON ALARM) AND A NORMALLY CLOSED (OPEN ON ALARM) SET OF DRY CONTACTS. THIS SIGNAL IS PROVIDED FROM A RELAY THROUGH A 3-CONDUCTOR CABLE.
(IH) INTERNAL HEAT	
IH5	INTERNALLY MOUNTED 500 W HEATER. PROVIDES HEAT WHEN REQUIRED. THE CONTROLLER HAS BUILT IN DEAD BAND PROGRAM THAT PREVENTS HEATING AND COOLING FROM OPERATING SIMULTANEOUSLY.
(AF) AMBIENT FILTER ₁	
10FIL	10-MICRON FILTER
4FIL	4-MICRON FILTER
DEFL	DUST EATER FILTER
(CTR) CONTROLLER ₁	
STDF	STANDARD CONTROLLER FRONT/AMBIENT SIDE
STDR	STANDARD CONTROLLER REAR/ENCLOSURE SIDE
XC	STANDARD CONTROLLER REMOTE MOUNTED (EXTERNAL TO UNIT)
ETHR	qubeLINK® BLUETOOTH/ETHERNET/REDUNDANT CONTROLLER REAR/ENCLOSURE SIDE
(O) OPTIONS	
CNV	CONVERSION COLLAR FOR ADAPTING EXISTING ENCLOSURE CUTOOUTS FROM OTHER ICEqube UNITS TO THE EV pro.
HOOD	AMBIENT EXHAUST HOODS FOR AIR DIRECTION, SECURITY, AND/OR WASHDOWN ENVIRONMENT. AVAILABLE IN ALL FINISHES.
EHO	EXTERNAL HEAT OUTPUT TO POWER AND CONTROL ADDITIONAL EXTERNAL HEATER (CAN'T BE PAIRED WITH STDR OR ETHR CONTROLLERS).
LA	LOW AMBIENT PACKAGE FOR LOW AMBIENT ENVIRONMENTS.
TEMP	FULL SCALE ENCLOSURE CUTOOUT DRAWING TEMPLATE.
DOOR	ENCLOSURE DOOR SWITCH INTERFACE FOR CONNECTING AC TO DOOR SWITCHES.
RS	EXTRA-LONG ENCLOSURE TEMPERATURE SENSOR WIRE FOR MOUNTING EXTERNAL TO THE UNIT.
PWRC	POWER CORD SUPPLIED INSTEAD OF STANDARD OPTION OF HARD WIRING TO TERMINAL BOX.
(W) WARRANTY	
1 YEAR	STANDARD WARRANTY

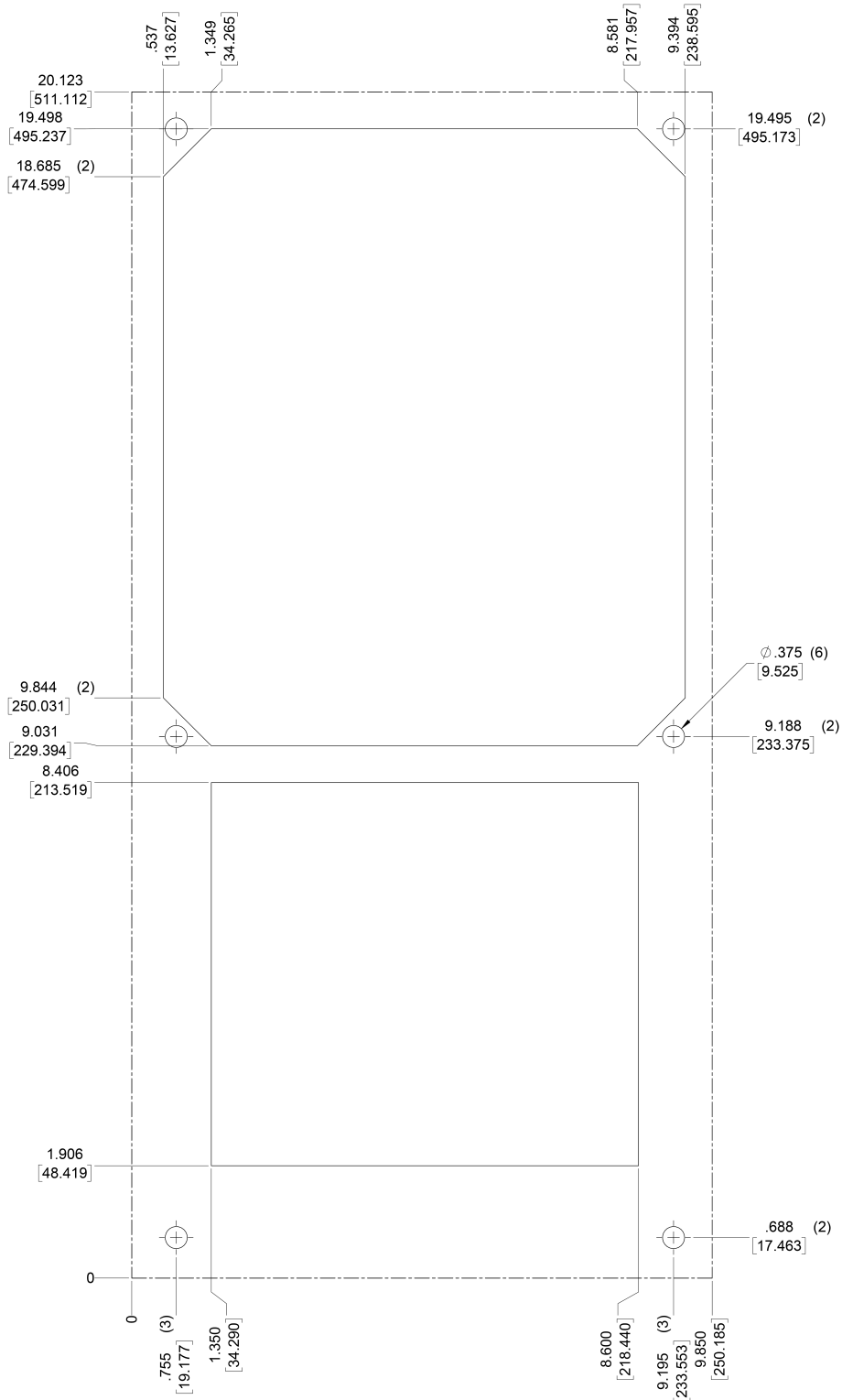
FOOTNOTES

1. Must choose one from category.
2. Unit construction is paired to finish and NEMA Type/IP classification.



ITEM NUMBER	VERSION	MANUFACTURER'S PART NUMBER	DESCRIPTION
N/A	IQ3EV pro	IQ35300	THE AMBIENT EXHAUST ENCLOSURE FOR THE IQ3EV pro
UNIVERSAL		MADE IN CHINA	
MA		AMERICAN MADE	
REV. NO.	DATE	SCALE	DRAWING NUMBER
1/24	01/14/2024	1/8	IQ354431
DRAWN BY: [Signature]		CHECKED BY: [Signature]	
DESIGNED BY: [Signature]		APPROVED BY: [Signature]	
DATE: 01/14/2024		SCALE: 1/8	
REV. NO.: 1/24		DRAWING NUMBER: IQ354431	

SHEET 2 of 4



DRAWING NUMBER: IQ351478 REV: B IQ1-2-3EV/IQ3EV pro CUTOUT DRAWING (TEMP1116)

VERIFY DIMENSIONS BEFORE CUTTING

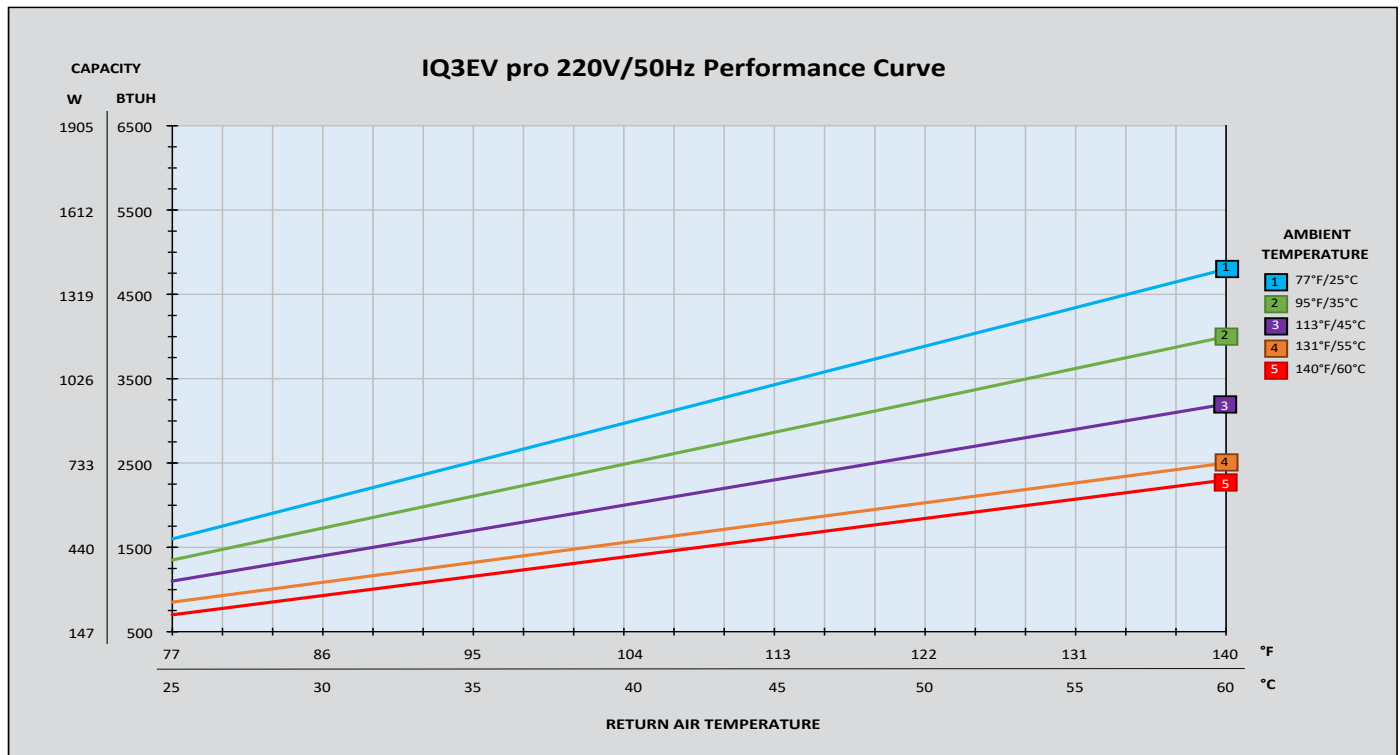
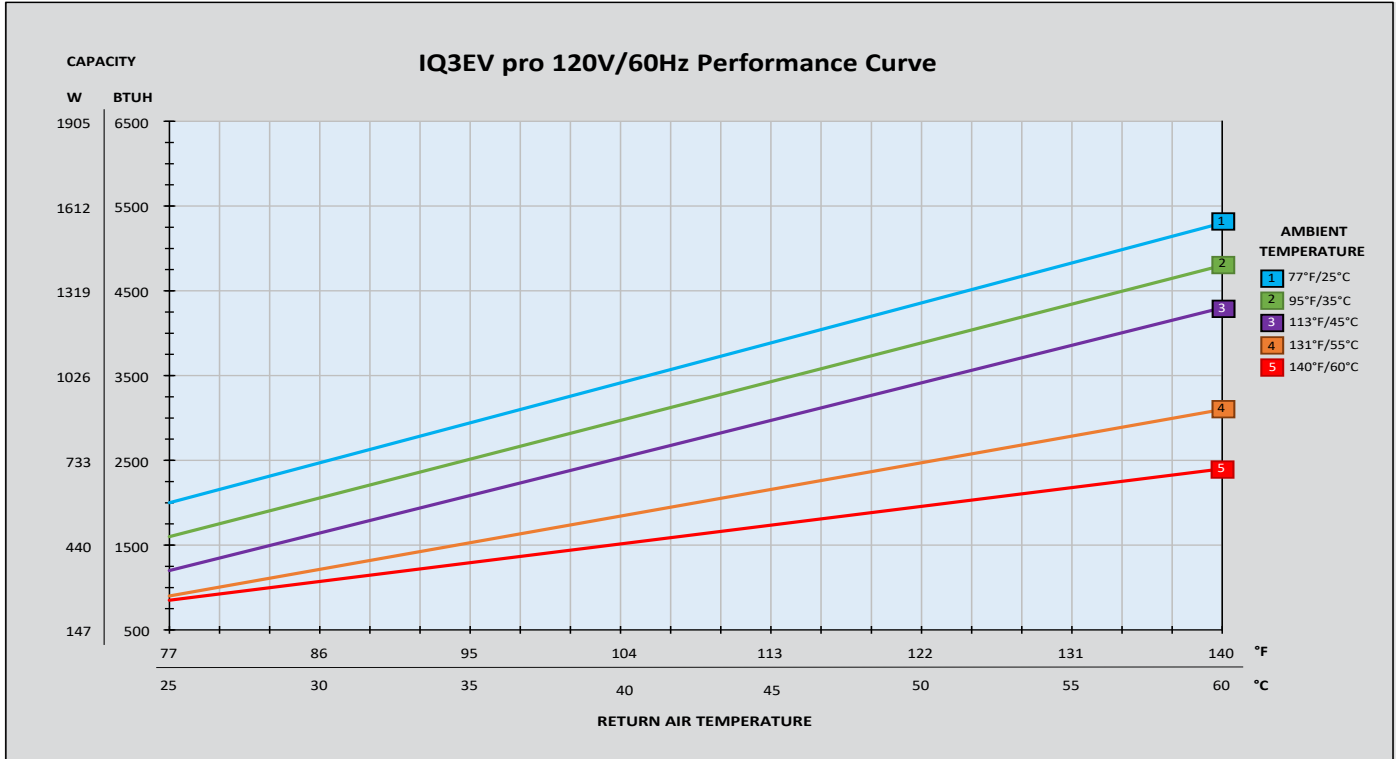
GD-ENG-61 REV 0

TECHNICAL DATA

ICEqube

IQ3EV pro

AN AMERIQube COMPANY

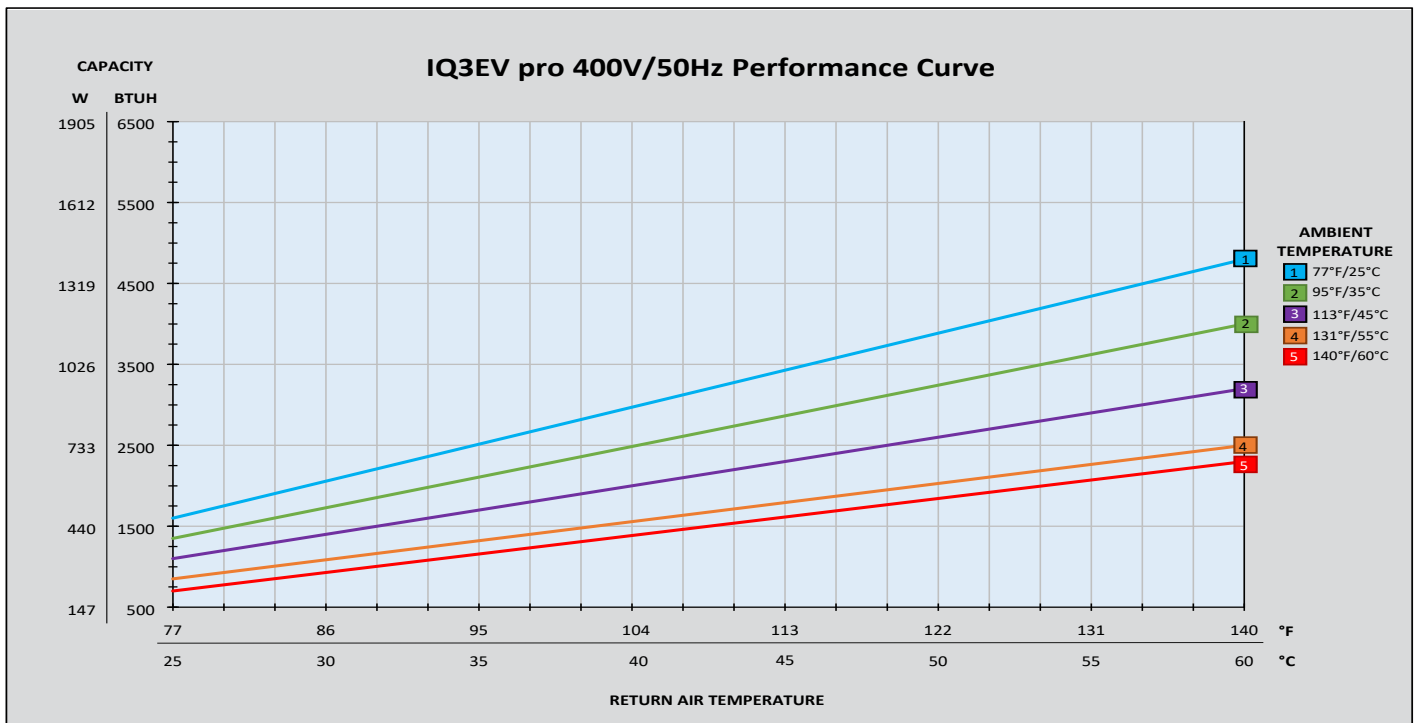
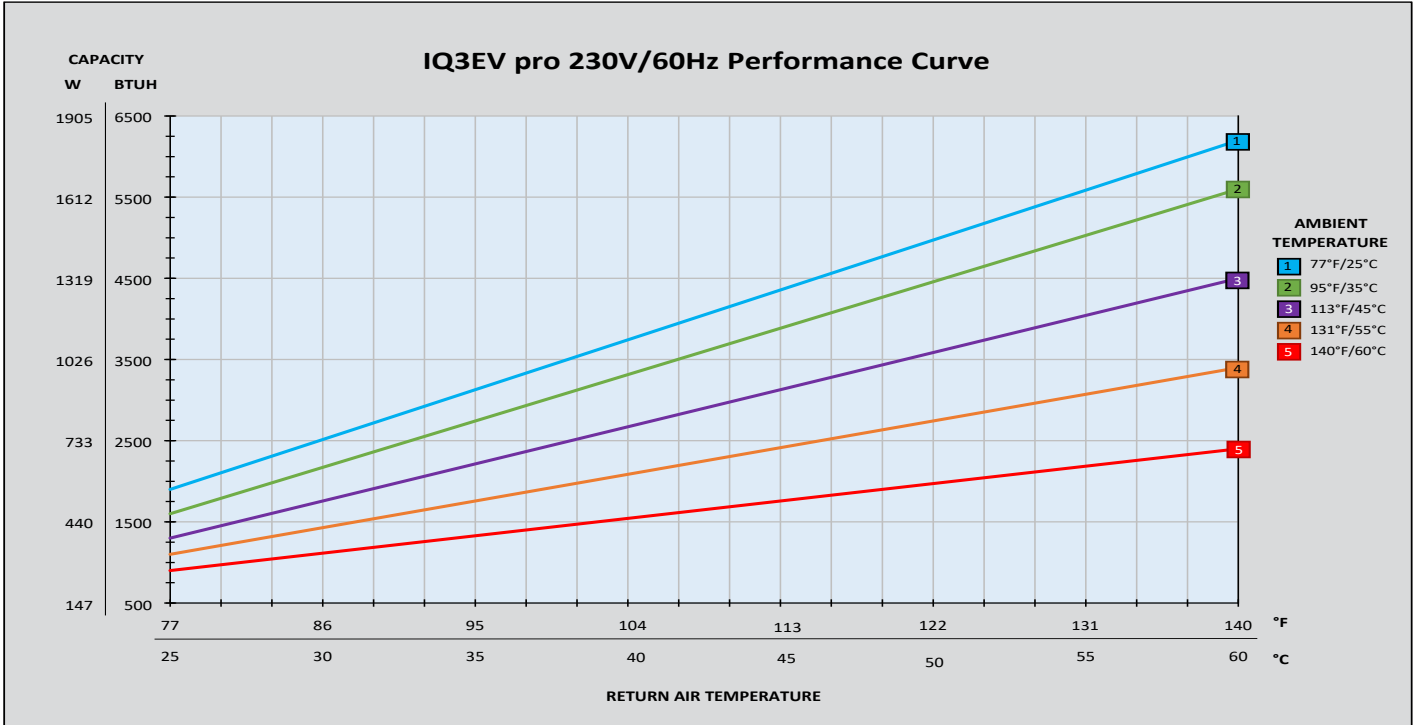


TECHNICAL DATA

ICEqube

IQ3EV pro

AN AMERIQube COMPANY

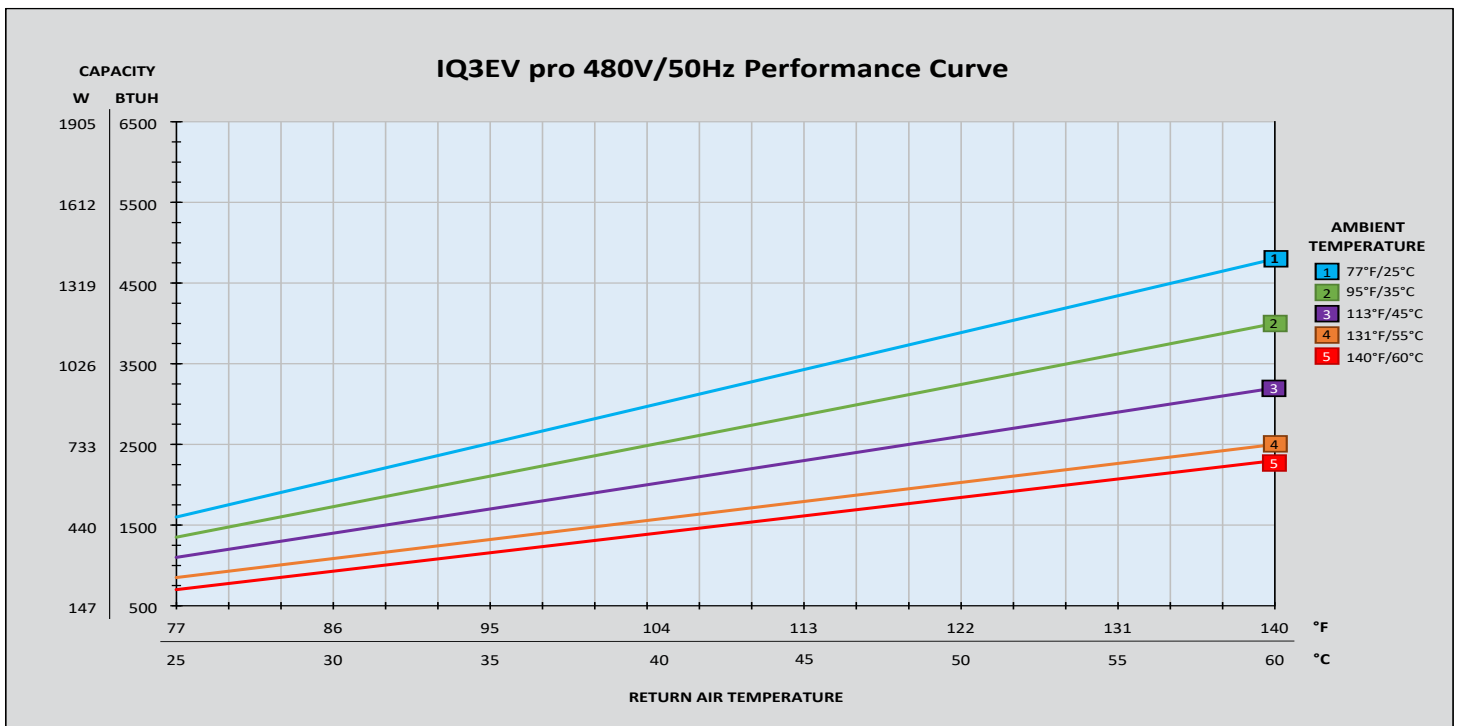
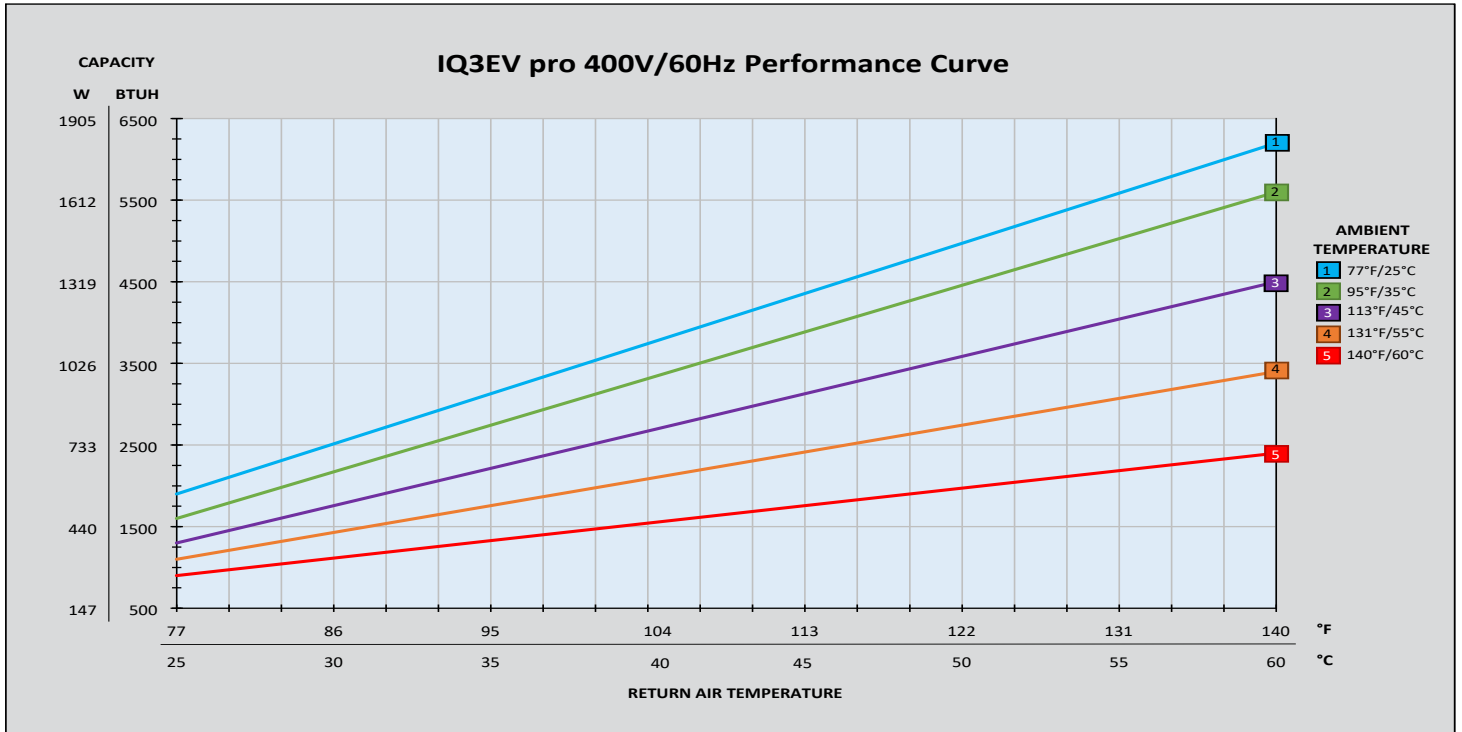


TECHNICAL DATA

ICEqube

IQ3EV pro

AN AMERIQube COMPANY



TECHNICAL DATA

ICEcube

IQ3EV pro

AN AMERIQUE COMPANY

