

D

C

B

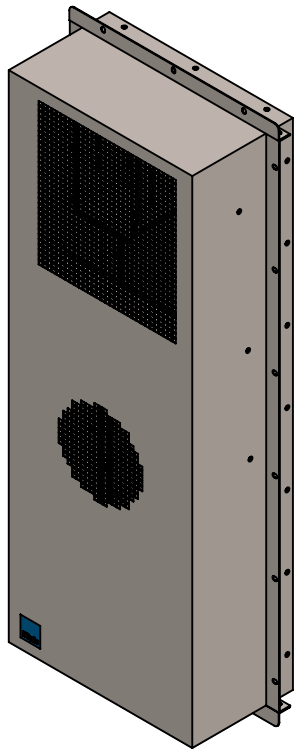
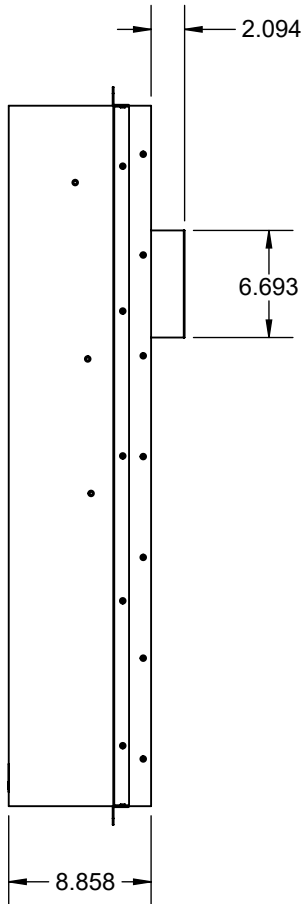
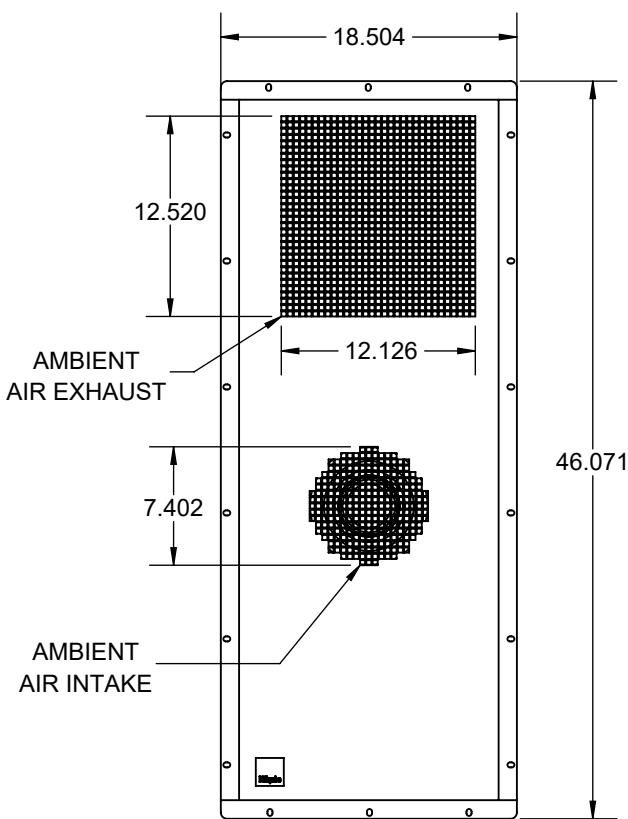
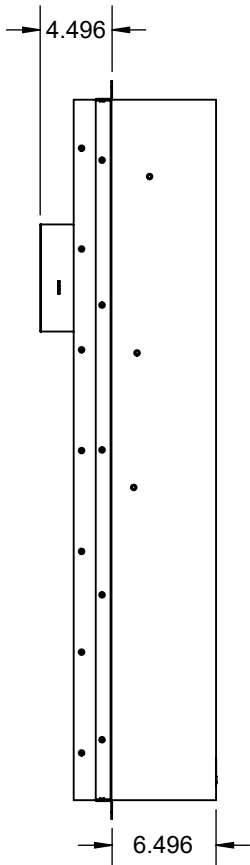
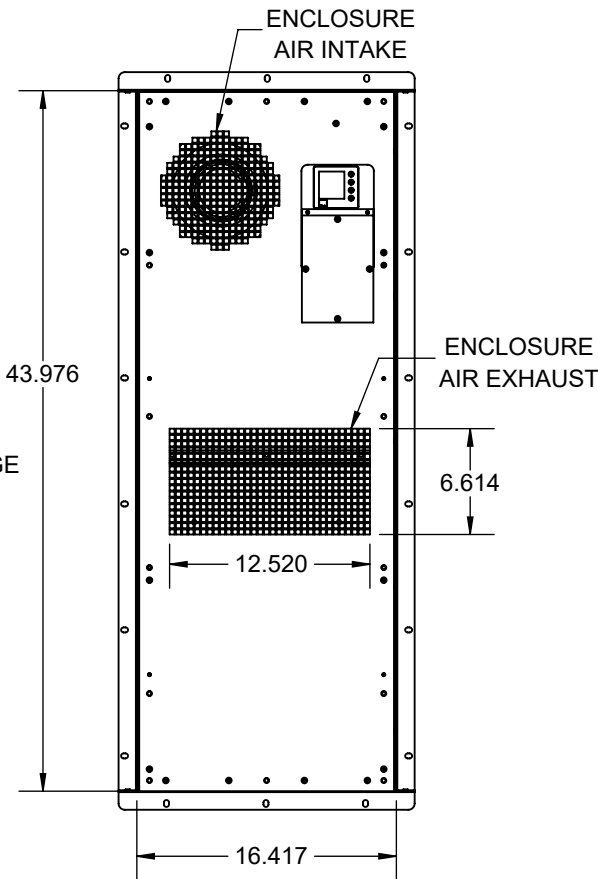
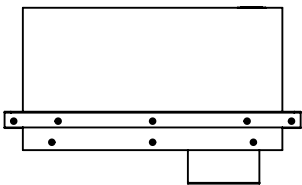
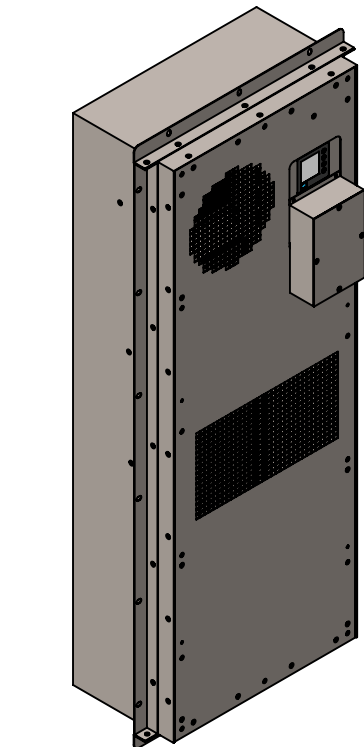
A

D

C

B

A



MODEL: **IQ6800BDC**

COOLING CAPACITY: 6824 BTU (2000W)

HEATING CAPACITY: 3412 BTU (1000W)

OPERATING VOLTAGE: 40-56VDC

COOLING OPERATING CURRENT: 15A (720W) @ 48VDC @ 95°F (35°C)

COOLING OPERATING CURRENT: 23A (1104W) @ 48VDC @ 131°F (55°C)

HEATING OPERATING CURRENT: 20A (960W) @ 48VDC

OPERATING TEMPERATURE RANGE: 14°F TO 131°F (-10°C TO 55°C)

SURFACE VERTICAL MOUNT DIMENSIONS: 43.98" H (1117MM) X 16.42" W (417MM) X 8.86" D (225MM)

INSET VERTICAL MOUNT DIMENSIONS: 46.07" H (1170MM) X 18.50" W (470MM) X 8.86" D (225MM)

SOUND LEVEL @ 5FT FROM UNIT @ A HT. OF 3FT: 60 dBA

SOUND LEVEL @ 2FT FROM UNIT @ A HT. OF 5FT: 62.8 dBA

ENCLOSURE EXHAUST AIRFLOW ≈ 450 CFM

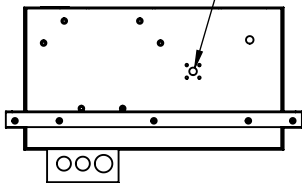
AMBIENT EXHAUST AIRFLOW ≈ 650 CFM

WEIGHT: 94.8 LBS (43KG)

REFRIGERANT: R134a

PROTECTION LEVEL: NEMA 12, 3R, 4, OR 4X

OVERFLOW DRAIN



D	ADDED 3RD PAGE AND REGISTERED SYMBOL ON LOGO	NAT	1/30/2025	RAR	1/30/2025	ECN-1620
C	CHANGED CUTOUT NOMENCLATURE	NAT	4/18/2023			
B	ADDED VERTICAL MODIFICATIONS AND CUTOUT, ADDED CFM READINGS	JWS	8/25/2021			
A	INITIAL DRAFT	NAT	9/28/2020			
REV	REVISION	CHG	DATE	APP	DATE	CN #

ITEM NUMBER	N/A
MATERIAL	N/A
EST WT:	lbs
DRAWN BY	NAT

USED ON	IQ6800BDC
DATE	9/28/2020
SCALE	1:12

UNLESS OTHERWISE SPECIFIED TOLERANCES	
.X	±.060
.XX	±.030
.XXX	±.015
FRACTIONAL	±1/16
ANGULAR	±1/2°
SURFACE FINISH	63
DO NOT SCALE DRAWING DIMENSIONS ARE INCHES	

ICE QUBE, INC.	THIS IS A PROPRIETARY DOCUMENT. DO NOT REPRODUCE OR DISCLOSE WITHOUT THE EXPRESS WRITTEN PERMISSION OF ICE QUBE, INC.
DESCRIPTION	SPEC DRAWING
DRAWING NUMBER	IQ352499
REV	D

8 7 6 5 4 3 2 1

D

C

B

A

INSET VERTICAL MOUNT

DIGITAL CONTROLLER

POWER AND SNMP CONNECTIONS

REAR VIEW

FRONT VIEW

IMPORTANT

GASKET MUST BE APPLIED AS SHOWN FOR PROPER OPERATION AND TO MAINTAIN ENCLOSURE INTEGRITY

INSET VERTICAL MOUNT CUTOUT

(46.102)

(2) 42.736

(2) 34.862

(2) 26.988

(2) 19.114

(2) 11.240

(2) 3.366

0

(2) 3.071

(2) 9.291

(2) 15.512

(18.504)

.374 (6)

1.042

17.462

18.130 (6)

45.709 (3)

45.041

Ø.402 (18)

1.061

.394 (3)

ITEM NUMBER N/A	USED ON IQ6800BDC	UNLESS OTHERWISE SPECIFIED TOLERANCES .X ±.060 .XX ±.030 .XXX ±.015 FRACTIONAL ±1/4 ANGULAR ±1/2° SURFACE FINISH 63	ICE QUBE, INC. THIS IS A PROPRIETARY DOCUMENT. DO NOT REPRODUCE OR DISCLOSE WITHOUT THE EXPRESS WRITTEN PERMISSION OF ICE QUBE, INC.
MATERIAL N/A		DESCRIPTION SPEC RAWING	
EST WT: NAT	DATE	SCALE 1:12	DRAWING NUMBER IQ352499
			REV D

DO NOT SCALE DRAWING
DIMENSIONS ARE INCHES

8 7 6 5 4 3 2 1

D

C

B

A

INSET VERTICAL MOUNT

0 0 0

DIGITAL CONTROLLER

POWER AND SNMP CONNECTIONS

0 0 0

REAR VIEW

FRONT VIEW

0 0 0

INSET VERTICAL MOUNT CUTOUT

(.374 (6)) 1.042

(.46.102) (2) 42.736 (2) 34.862 (2) 26.988 (2) 19.114 (2) 11.240 (2) 3.366 0

45.709 (3) 45.041

17.462 18.130 (6)

Ø.402 (18)

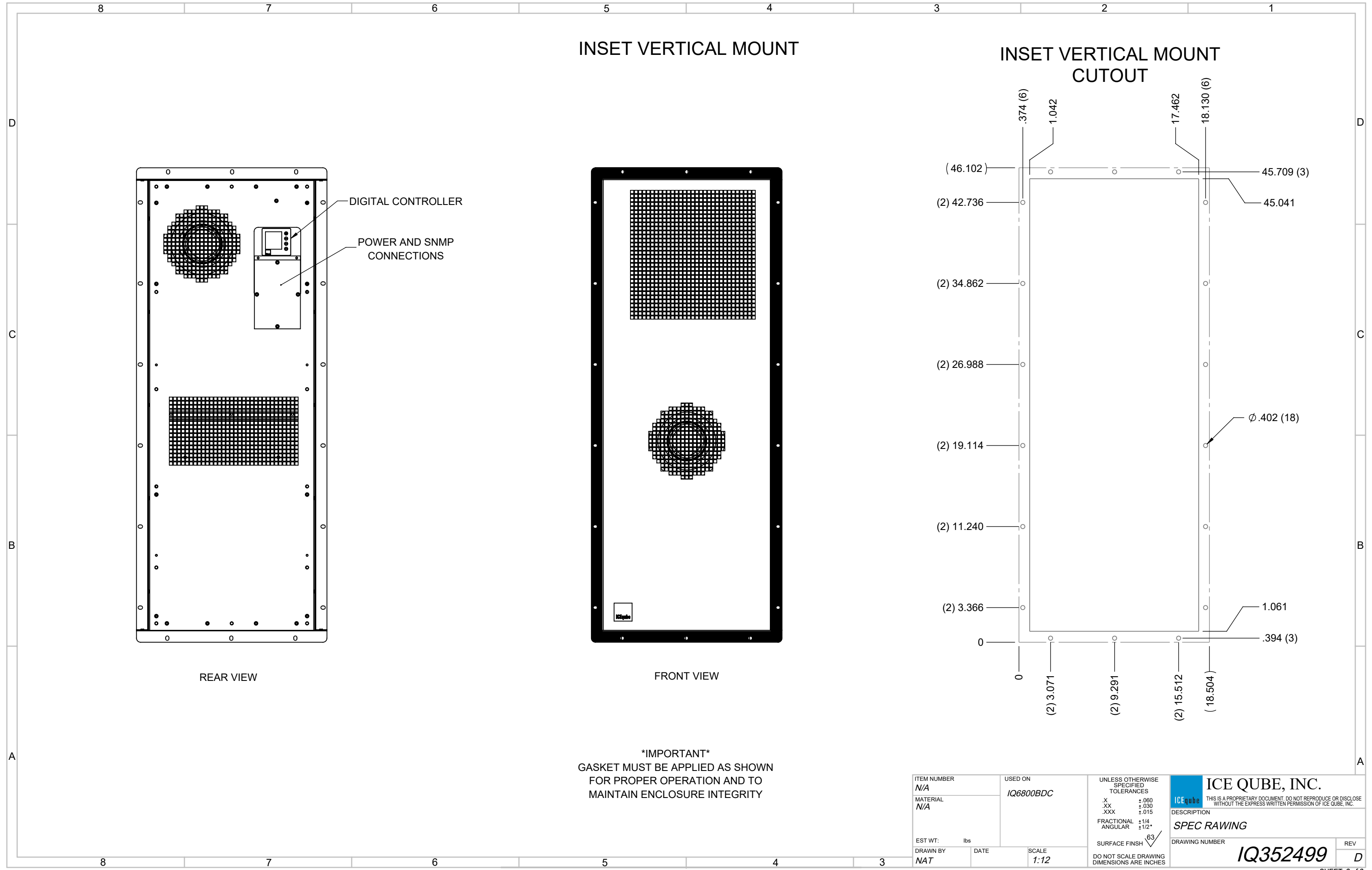
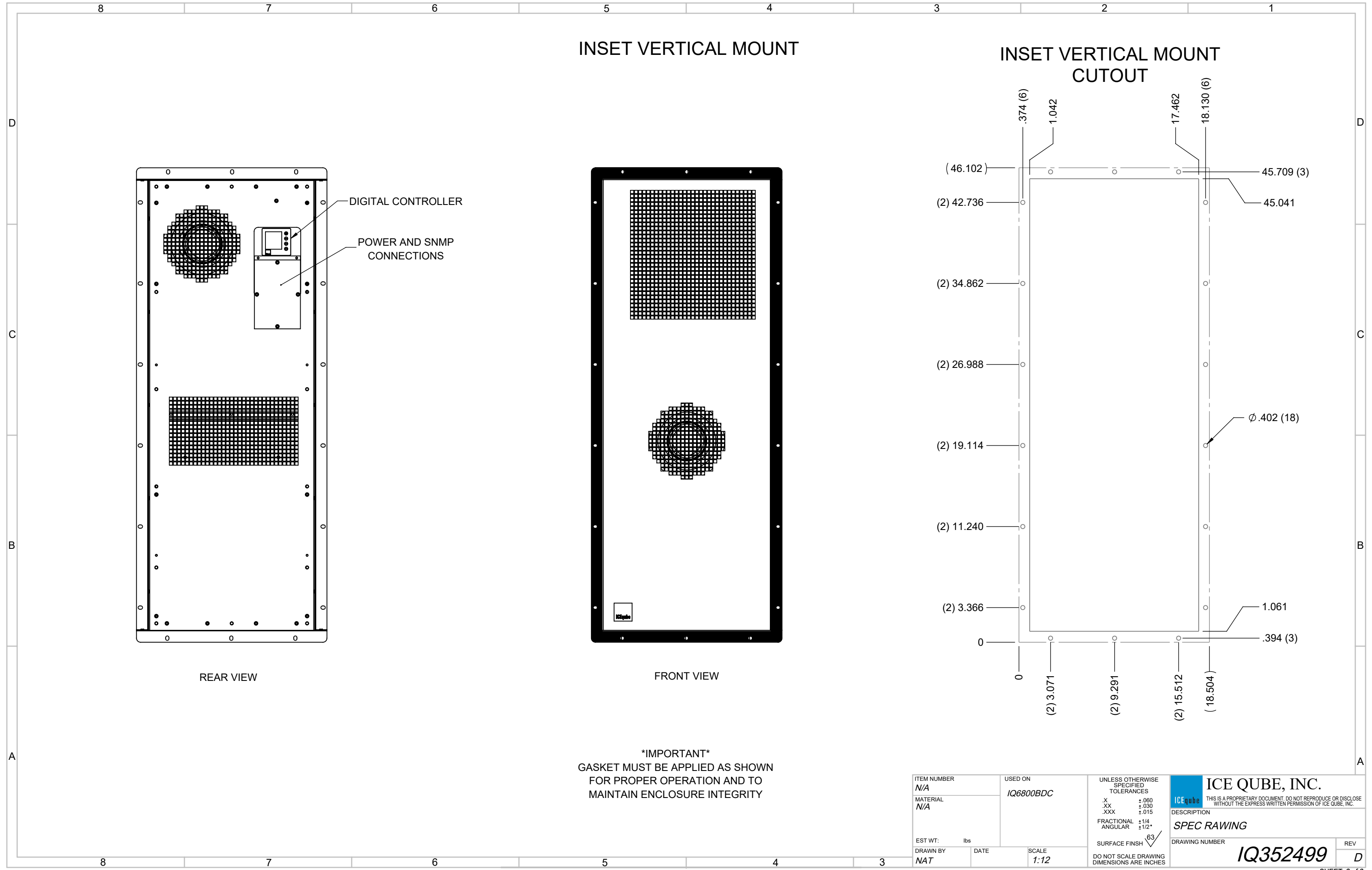
1.061 .394 (3)

0 (2) 3.071 (2) 9.291 (2) 15.512 (18.504)

IMPORTANT
GASKET MUST BE APPLIED AS SHOWN
FOR PROPER OPERATION AND TO
MAINTAIN ENCLOSURE INTEGRITY

ITEM NUMBER <i>N/A</i>	USED ON <i>IQ6800BDC</i>	UNLESS OTHERWISE SPECIFIED TOLERANCES .X ±.060 .XX ±.030 .XXX ±.015 FRACTIONAL ±1/4 ANGULAR ±1/2° SURFACE FINISH 63	ICE QUBE, INC. <small>THIS IS A PROPRIETARY DOCUMENT. DO NOT REPRODUCE OR DISCLOSE WITHOUT THE EXPRESS WRITTEN PERMISSION OF ICE QUBE, INC.</small>	
MATERIAL <i>N/A</i>		DESCRIPTION SPEC RAWING		
EST WT: lbs	DATE	SCALE 1:12	DRAWING NUMBER IQ352499	REV D
DRAWN BY <i>NAT</i>		DO NOT SCALE DRAWING DIMENSIONS ARE INCHES		

8 7 6 5 4 3

[illegible]

8 7 6 5 4 3 2 1

D

C

B

A

INSET VERTICAL MOUNT

DIGITAL CONTROLLER

POWER AND SNMP CONNECTIONS

REAR VIEW

FRONT VIEW

IMPORTANT

GASKET MUST BE APPLIED AS SHOWN FOR PROPER OPERATION AND TO MAINTAIN ENCLOSURE INTEGRITY

INSET VERTICAL MOUNT CUTOUT

(46.102)

(2) 42.736

(2) 34.862

(2) 26.988

(2) 19.114

(2) 11.240

(2) 3.366

0

(2) 3.071

(2) 9.291

(2) 15.512

(18.504)

.374 (6)

1.042

17.462

18.130 (6)

45.709 (3)

45.041

Ø.402 (18)

1.061

.394 (3)

ITEM NUMBER N/A	USED ON IQ6800BDC	UNLESS OTHERWISE SPECIFIED TOLERANCES .X ±.060 .XX ±.030 .XXX ±.015 FRACTIONAL ±1/4 ANGULAR ±1/2° SURFACE FINISH 63	ICE QUBE, INC. THIS IS A PROPRIETARY DOCUMENT. DO NOT REPRODUCE OR DISCLOSE WITHOUT THE EXPRESS WRITTEN PERMISSION OF ICE QUBE, INC.
MATERIAL N/A			
EST WT: lbs	DATE	SCALE 1:12	DESCRIPTION SPEC RAWING
DRAWN BY NAT			DRAWING NUMBER IQ352499
			REV D

8 7 6 5 4 3

8 7 6 5 4 3 2 1

D

C

B

A

INSET VERTICAL MOUNT

DIGITAL CONTROLLER

POWER AND SNMP CONNECTIONS

REAR VIEW

FRONT VIEW

IMPORTANT

GASKET MUST BE APPLIED AS SHOWN FOR PROPER OPERATION AND TO MAINTAIN ENCLOSURE INTEGRITY

INSET VERTICAL MOUNT CUTOUT

(46.102)

(2) 42.736

(2) 34.862

(2) 26.988

(2) 19.114

(2) 11.240

(2) 3.366

0

(2) 3.071

(2) 9.291

(2) 15.512

(18.504)

.374 (6)

1.042

17.462

18.130 (6)

45.709 (3)

45.041

Ø.402 (18)

1.061

.394 (3)

ITEM NUMBER N/A	USED ON IQ6800BDC	UNLESS OTHERWISE SPECIFIED TOLERANCES .X ±.060 .XX ±.030 .XXX ±.015 FRACTIONAL ±1/4 ANGULAR ±1/2° SURFACE FINISH 63	ICE QUBE, INC. THIS IS A PROPRIETARY DOCUMENT. DO NOT REPRODUCE OR DISCLOSE WITHOUT THE EXPRESS WRITTEN PERMISSION OF ICE QUBE, INC.
MATERIAL N/A			
EST WT: lbs	DATE	SCALE 1:12	DESCRIPTION SPEC RAWING
DRAWN BY NAT			DRAWING NUMBER IQ352499
			REV D

8 7 6 5 4 3

8 7 6 5 4 3 2 1

D

C

B

A

INSET VERTICAL MOUNT

The rear view shows the internal layout with a digital controller, power and SNMP connections, and two circular fan units. The front view shows the external appearance with a gasket and an Icecube logo.

DIGITAL CONTROLLER

POWER AND SNMP CONNECTIONS

REAR VIEW

FRONT VIEW

IMPORTANT

GASKET MUST BE APPLIED AS SHOWN FOR PROPER OPERATION AND TO MAINTAIN ENCLOSURE INTEGRITY

INSET VERTICAL MOUNT CUTOUT

This diagram provides precise dimensions for the cutout in inches. It includes vertical dimensions on the left, horizontal dimensions at the top and bottom, and specific hole locations.

(.374 (6))

1.042

(.46.102)

(2) 42.736

(2) 34.862

(2) 26.988

(2) 19.114

(2) 11.240

(2) 3.366

0

(2) 3.071

(2) 9.291

(2) 15.512

(18.504)

45.709 (3)

45.041

Ø.402 (18)

1.061

.394 (3)

ITEM NUMBER N/A	USED ON IQ6800BDC	UNLESS OTHERWISE SPECIFIED TOLERANCES .X ±.060 .XX ±.030 .XXX ±.015 FRACTIONAL ±1/4 ANGULAR ±1/2° SURFACE FINISH 63	ICE QUBE, INC. THIS IS A PROPRIETARY DOCUMENT. DO NOT REPRODUCE OR DISCLOSE WITHOUT THE EXPRESS WRITTEN PERMISSION OF ICE QUBE, INC.
MATERIAL N/A		DESCRIPTION SPEC RAWING	
EST WT: N/A	DATE	SCALE 1:12	DRAWING NUMBER IQ352499
			REV D

DO NOT SCALE DRAWING
DIMENSIONS ARE INCHES

8 7 6 5 4 3