

The ICEcube logo is located in the top left corner. It consists of the word "ICEcube" in a white, sans-serif font, with "ICE" in all caps and "cube" in title case. The logo is set against a solid blue square background.

**ICEcube**

AN **AMER**cube COMPANY

**DON'T CUT CORNERS.**

**qube it<sup>TM</sup>**

A decorative horizontal bar is positioned below the "qube it" text. It features a blue segment on the left and a red segment on the right, separated by a diagonal line.

**CLIMATE CONTROL | CABINETS | ENCLOSURES | RACKS**

# FAN SYSTEMS

Our Fan Systems comprise a versatile category of Filtered Fans, Backup Filtered Fans, and Washdown Filtered Fans. The FP, FPP, and FP-H are our Filtered Fans available in plastic or metal grills with optional hoods. The BFF Series is our Backup Filter Fans, designed to vent your application in emergency circumstances. The FPW Series is our Washdown Filtered Fans designed for the harshest of environments requiring protection against high-pressure water spray.

## **FILTERED FANS: FP, FPP, and FP-H Series**

## **BACKUP FILTERED FANS: BFF Series**

## **WASHDOWN FILTERED FANS: FPW Series**

### STANDARD FEATURES

- UL Listed–NEMA Type 12, 3R, 4, 4X (\*Model dictates NEMA Type Rating)
- CE Certified
- FPP Series-plastic filtered fans are easily installed and maintained
- FP, FP-H, FPW, and BFF Series constructed of durable powder coated 16-gauge welded steel construction
- Reusable 10-micron electrostatic intake filter standard
- Package includes both intake and exhaust units
- FP, FPP, FP-H, FPW Series available in 120 and 230 VAC
- BFF Series available in 120, 230, 24VDC, 48VDC, and dual voltages

### OPTIONS & ACCESSORIES

- 304SS and 316SS
- Custom Colors
- Replacement Filters
- 4-Micron Electrostatic Intake Filter



*Metal Filtered Fans  
(FP Series)*

*Backup Filtered Fans  
(BFF Series)*

*Plastic Filtered Fans  
(FPP Series)*



*Washdown Filtered Fans  
(FPW Series)*

# THERMOELECTRIC COOLERS

ICEcube's TE Series Thermoelectric Coolers utilize the Peltier Effect to create closed-loop cooling for your application. Our Thermoelectric Coolers allow for closed-loop cooling on applications that require a cooling unit to be mounted on an unlevelled surface. The TEC further ensures a more efficient utilization of the TE Series by giving you control of variable cooling and heating.

## **INSET MOUNT: TE and TEC Series**

### STANDARD FEATURES

- UL Listed–NEMA Type 12, 3R, 4, 4X
- CE Certified
- Horizontal and vertical mounting to enclosure
- 200–300 Watts (682–1024 Btu/h) of closed-loop cooling capacity
- Zero Ozone Depletion Potential (ODP)
- Zero Global Warming Potential (GWP)
- Powder coated durable 16-gauge welded steel construction



# NetworkQUBE®

## TELECOM & NETWORK ENCLOSURES

NetworkQUBE® is our unique industry leading space saving line of NEMA Type 12, 3R, 4, 4X telecom and network enclosures designed to protect your critical equipment and batteries in the harshest of environments.

**WALL/POLE MOUNT: MULTI-PURPOSE CABINETS (MPC) | WALL CABINETS (WC) | WALL CABINETS W/BATTERY CHAMBER (WCB)**

**PAD MOUNT: EQUIPMENT CABINETS (EC) | EQUIPMENT CABINETS W/BATTERY CHAMBER (ECB)**  
**EZ-ACCESS™ BATTERY CHAMBER**

### STANDARD FEATURES

- UL Listed to UL50/50E and UL508A NEMA Type 12, 3R, 4, 4X, and IP66
- Powder coated blue 19" or 23" rack rails
- ICEcube specializes in designing bay configurations that cater to the unique requirements of each customer. Below are some examples:  
[Single Bay Equipment Cabinets: 7-48RU](#) [Double Bay Equipment Cabinets: 14-96RU](#)  
[Triple Bay Equipment Cabinets: 21-144RU](#)
- Aircraft grade 5052 aluminum powder coated beige
- Fully welded construction
- Zinc primer and powder coated
- Stainless steel lifting brackets and hardware
- Easy lift off door
- Modular Series designed for easy integration of accessories and future expansion with removable side panels
- Modular Series has no connecting collar allowing for a smaller footprint when bolting multiple enclosures together



### OPTIONS & ACCESSORIES

- Swing Handles Zinc Die Black Powder Coated
- NEMA Type 3R, 4, 4X
- Stainless Steel Hardware
- Custom Colors
- Custom Sizes

# IndustriQUBE®

IndustriQUBE® is our unique line of NEMA Type 12, 3R, 4, 4X industrial enclosures designed to protect your critical equipment in the harshest of environments.

**WALL-ENCLOSURE: Front Door**

**FREE-STANDING ENCLOSURE: Front and/or Rear Door**

**FREE STANDING ENCLOSURES W/FLOOR STANDING: Front and/or Rear Door**

### STANDARD FEATURES

- UL Listed to UL50/50E and UL508A NEMA Type 12, 3R, 4, 4X and IP66
- Single or double door with removable middle post
- Carbon steel powder coated gray and 304SS or 316SS stainless steel
- Fully welded construction
- Easy lift off hinges for door removal
- Lifting brackets for easy in-field installation



### OPTIONS & ACCESSORIES

- Custom Colors and Custom Sizes
- AISI 304L or 316L Stainless Steel
- Three-point Latch and Quarter Turns
- Removable Back Panel

# AIR CONDITIONERS

Our signature Air Conditioners protect vital electronics by controlling the temperature and environment of enclosed sensitive electronic equipment in various industries.

**SURFACE VERTICAL MOUNT:** BDC®, EV pro, Qube (MM), V & VS Series

**INSET VERTICAL MOUNT:** BDC Series® and Blade (B) Series

**TOP MOUNT:** T and TXS Series

**INTERNAL MOUNT:** I and IXS Series

## STANDARD FEATURES

- UL Listed–NEMA Type 12, 3R, 4, 4X
- CE Certified
- Highest operating ambient temperature
- Industry's only variable speed units
- Digital temperature controller with multiple alarm outputs
- Built-in condensate evaporator or eliminator
- Durable 16 gauge welded steel construction
- Efficient, quiet, long-lasting rotary compressor
- Space-saving cabinet design with easy pull-out filter



Available  
in 1,000–  
27,000 BTUH  
Models

## OPTIONS & ACCESSORIES

- 24VDC, 48VDC, 120V, 230V, 400V and 480V
- AISI 304L and 316L Stainless Steel
- Custom Colors, Remote Controller, Ethernet Controller, and Internal Heat Output

# HEAT EXCHANGERS

ICEcube's Heat Exchangers are an energy-efficient, closed-loop cooling solution that utilizes MSCCT (Multi-Surface Cold Core Technology) for environments where system design temperatures are greater than ambient temperatures.

**SURFACE VERTICAL MOUNT:** XF and CF Series

**INSET SURFACE VERTICAL MOUNT:** Blade (B-CF) Series

## STANDARD FEATURES

- UL Listed–NEMA Type 12, 3R, 4, 4X
- CE Certified
- Durable 16 gauge welded steel construction
- Variable speed fans\*
- Space-saving aesthetic cabinet design
- Industries most efficient MSCCT (Multi-surface cold core technology)
- Quiet, long-lasting ball bearing fans



Available in  
5.7–105.5 W/°F  
(10.3–189.9  
W/°C)

## OPTIONS & ACCESSORIES

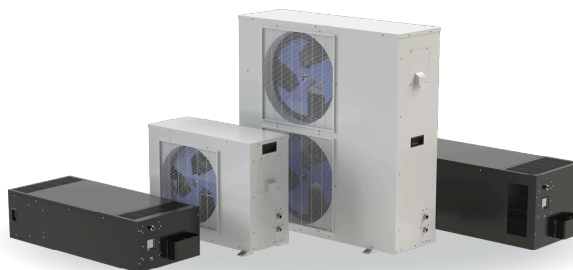
- AISI 304L and 316L Stainless Steel
- Custom Colors and Internal Heat Output
- 24VDC, 48VDC, 120V & 230V

# SERVER RACK & SHELTER / CONTAINER COOLERS

**MINI-SPLIT SYSTEMS:** SE and SC Series

## STANDARD FEATURES

- UL Listed
- CE Certified
- Condensate evaporator and pump
- Mounts in 19" rack enclosures maintaining hot and cold aisles in your application
- 3,000 Watt–10,000 Watt (10,230–34,100 BTUH) cooling capacity





# HAZLOC AIR CONDITIONERS

## HAZARDOUS LOCATION

ICEqube has been manufacturing and continuously refining Hazardous Location Air Conditioners since 2003. Today, we offer a complete line of EX Series Zone 1, EV Series Zone 2-CI22, and EV Series CID2 products ranging from 1,000-20,000 Btu/h (293-5861 Watts) of closed-loop cooling capacity.

**SURFACE VERTICAL MOUNT:** EX Series-Zone 1 ATEX/IECEX/UK CA, EV Series-Zone 2 CID2 ATEX/IECEX/AEx/UK CA, and EV Series-CID2

### STANDARD FEATURES

- EX Series Zone 1 - ATEX/IECEX/UK CA
- EV Series Zone 2 - CI22 ATEX/IECEX/AEx/UK CA
- EV Series CID2-UL Listed
- Highest operating ambient temperature in the industry
- Compact design utilizing hermetically sealed components, solid-state technology, and intrinsically safe components
- Zone 1 comes standard with 304SS or 316SS
- Zone 2 and CID2 comes standard carbon powder coated
- NEMA Type 12, 3R, 4, 4X and IP66

### OPTIONS & ACCESSORIES

- AISI 304L and 316L Stainless Steel
- Custom Colors
- Purge Fitting
- Alarm Output



# HAZLOC HEAT EXCHANGERS

## HAZARDOUS LOCATION

ICEqube's Hazardous Location Heat Exchangers utilizes our unique MSCCT. This technology has allowed ICEqube to achieve industry-leading efficiency, eliminating the need for refrigerant-based systems (heat pipes), that are prone to system failures. These closed-looped units come certified for Zone 2-CI22 and CID2 with 5.7 to 83 W/°F (10.3-149.4 W/°C) of cooling capacity.

**SURFACE VERTICAL MOUNT:** HE Series ZONE 2-CI22 ATEX/IECEX/AEx/UK CA, and CID2

### STANDARD FEATURES

- UL Listed-NEMA Type 12, 3R, 4, 4X
- IP66
- Highest operating ambient temperature in the industry
- Unique MSCCT design
- Durable 16-gauge powder coated welded steel construction

### OPTIONS & ACCESSORIES

- AISI 304L and 316L Stainless Steel
- Custom Colors



Available in  
5.7-83 W/°F  
(10.3-149.4  
W/°C)

# LET'S CHAT

ICEqube has been proudly manufacturing climate control and enclosure solutions, expertly designed and meticulously crafted for critical applications since 1995. Our innovative solutions serve a wide variety of industries, including telecom, oil and gas, energy, water, wastewater, industrial automation, process automation, energy storage, pharmaceutical, digital signage, packaging, food and beverage, and retail. ICEqube's climate control solutions include the world's smallest and slimmest packaged air conditioners, the industry's only true variable speed 48VDC air conditioners, the industry's highest ambient operating air conditioners and heat exchangers, Hazardous Location climate control for Zone 1, Zone 2, C1Z2, and CID2 with ATEX/IECEx/AEx, and UL certifications.

Our enclosure solutions comprise of two categories: IndustriQUBE® for the industrial marketplace and NetworkQUBE® for the telecom and network marketplace. Our passionate team of designers, engineers, manufacturers, and sales associates, work hard to provide you with the most advanced, highest quality service, and cost-effective climate control and enclosure solutions to ensure your business can function at its highest capacity.

Planning a project? Let's chat! Dial **888-867-8234** to speak to one of our product sales specialists or visit [www.ICEqube.com](http://www.ICEqube.com) to check out our full line of climate control, cabinet, enclosure, and rack solutions.



**ICEqube.com**

Email [Sales@ICEqube.com](mailto:Sales@ICEqube.com)

Toll-free 888-867-8234 Fax 724-837-6365 Int'l +001 724-837-7600

Address 141 Wilson Avenue, Greensburg, PA 15601