

D

C

B

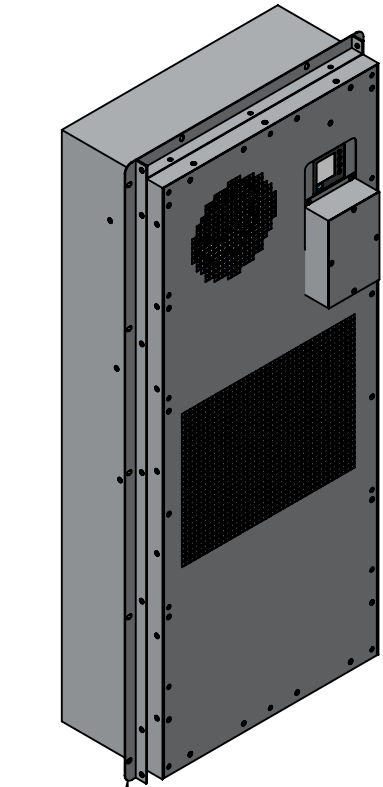
A

D

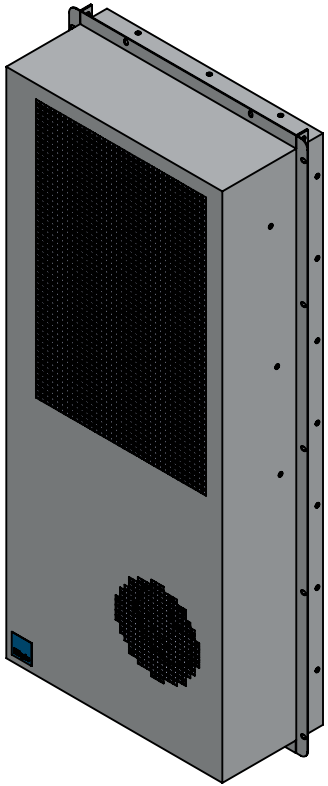
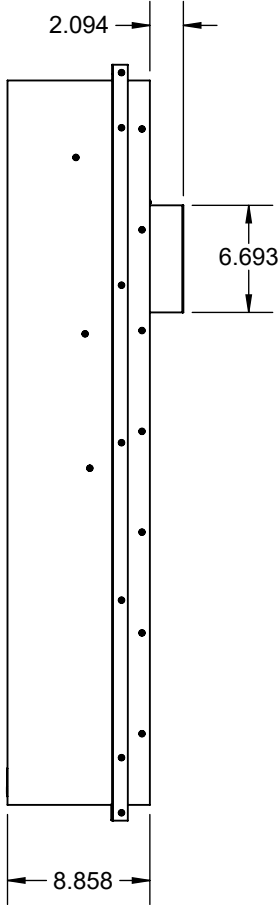
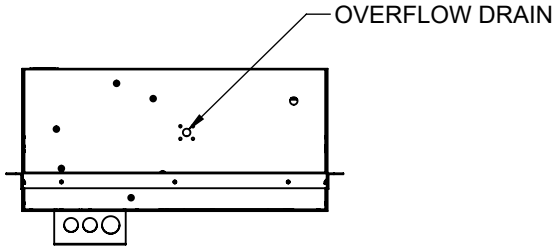
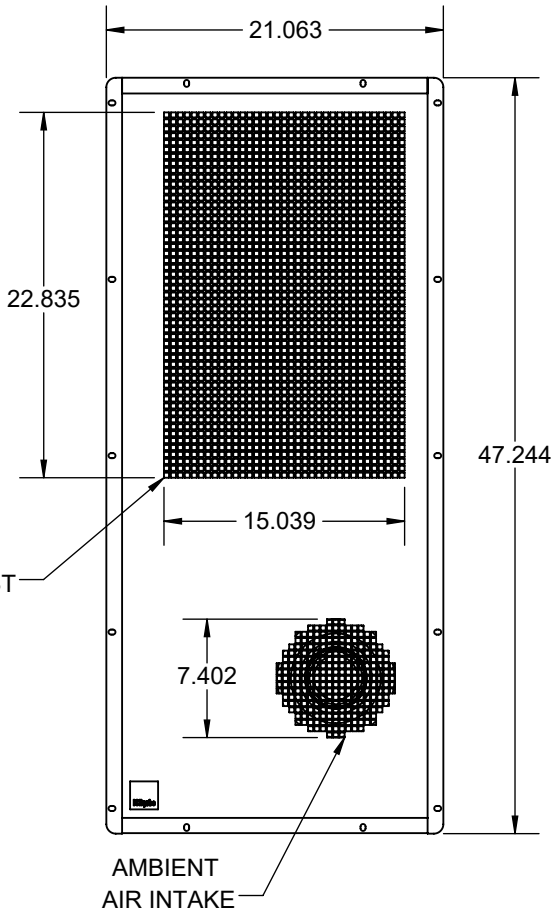
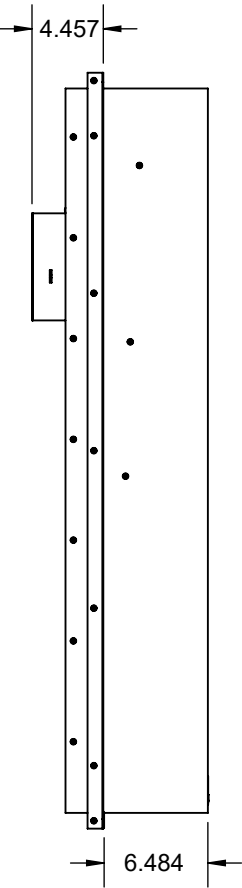
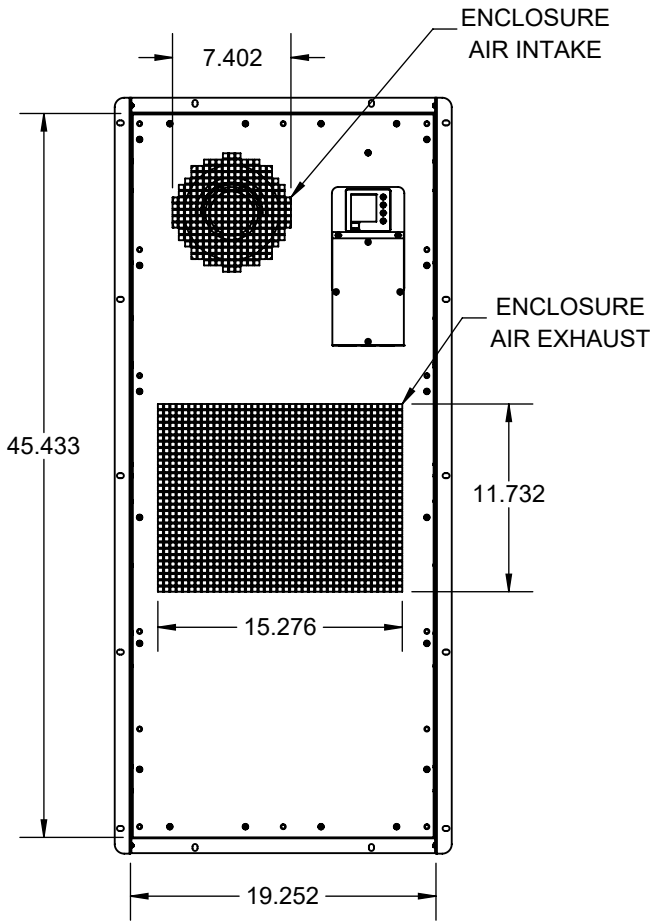
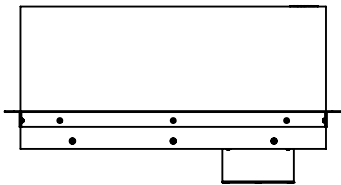
C

B

A



OPTIONAL:
INSET VERTICAL MOUNT FLANGE



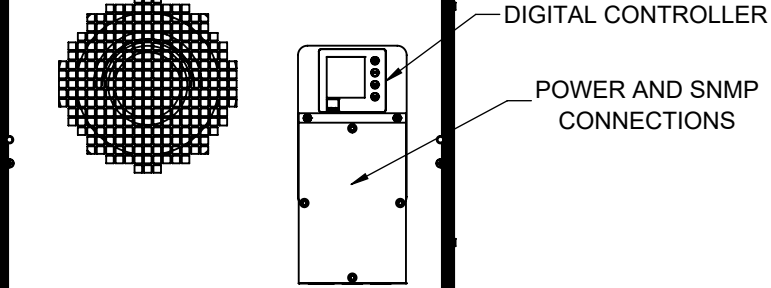
MODEL: **IQ12000BDC**
COOLING CAPACITY: 13000 BTU (3810W)
HEATING CAPACITY: 3412 BTU (1000W)
OPERATING VOLTAGE: 40-56VDC
COOLING OPERATING CURRENT: 27A (1296W) @ 48VDC @ 95°F (35°C)
COOLING OPERATING CURRENT: 38A (1824W) @ 48VDC @ 131°F (55°C)
HEATING OPERATING CURRENT: 21A (1008W) @ 48VDC
OPERATING TEMPERATURE RANGE: 14°F TO 131°F (-10°C TO 55°C)
SURFACE VERTICAL MOUNT DIMENSIONS: 45.43" H (1154MM) X 19.25" W (489MM) X 8.86" D (225MM)
INSET VERTICAL MOUNT DIMENSIONS: 47.24" H (1200MM) X 21.06" W (535MM) X 8.86" D (225MM)
SOUND LEVEL @ 5FT FROM UNIT @ A HT. OF 3FT: 60 dBA
SOUND LEVEL @ 2FT FROM UNIT @ A HT. OF 5FT: 62.8 dBA
ENCLOSURE EXHAUST AIRFLOW ≈ 650 CFM
AMBIENT EXHAUST AIRFLOW ≈ 790 CFM
WEIGHT: 116.8 LBS (53KG)
REFRIGERANT: R134a
LEVEL OF PROTECTION: NEMA 12, 3R 4, OR 4X

<table><tr><td>B</td><td colspan="3">UPDATED CAPACITY</td><td>NAT</td><td>5/22/2025</td><td>RAR</td><td>5/22/2025</td><td>ECN-1635</td></tr><tr><td>A</td><td colspan="3">INITIAL DRAFT</td><td>NAT</td><td>1/31/2025</td><td>RAR</td><td>2/11/2025</td><td>ECN-1620</td></tr><tr><td>REV</td><td colspan="3">REVISION</td><td>CHG</td><td>DATE</td><td>APP</td><td>DATE</td><td>CN #</td></tr></table>							B	UPDATED CAPACITY			NAT	5/22/2025	RAR	5/22/2025	ECN-1635	A	INITIAL DRAFT			NAT	1/31/2025	RAR	2/11/2025	ECN-1620	REV	REVISION			CHG	DATE	APP	DATE	CN #	ITEM NUMBER N/A		USED ON IQ12000BDC		UNLESS OTHERWISE SPECIFIED TOLERANCES .X ±.060 .XX ±.030 .XXX ±.015 FRACTIONAL ±1/16 ANGULAR ±1/2° SURFACE FINISH 63 DO NOT SCALE DRAWING DIMENSIONS ARE INCHES		<div>ICE QUBE, INC.</div> <div>THIS IS A PROPRIETARY DOCUMENT. DO NOT REPRODUCE OR DISCLOSE WITHOUT THE EXPRESS WRITTEN PERMISSION OF ICE QUBE, INC.</div> <div>DESCRIPTION SPEC DRAWING</div> <div>DRAWING NUMBER IQ354597</div> <div>REV B</div>	
							B	UPDATED CAPACITY			NAT	5/22/2025	RAR	5/22/2025	ECN-1635																										
							A	INITIAL DRAFT			NAT	1/31/2025	RAR	2/11/2025	ECN-1620																										
							REV	REVISION			CHG	DATE	APP	DATE	CN #																										
MATERIAL N/A																																									
EST WT: lbs		DRAWN BY NAT		DATE 1/31/2025		SCALE 1:12																																			

8	7	6	5	4	3	2	1
---	---	---	---	---	---	---	---



A

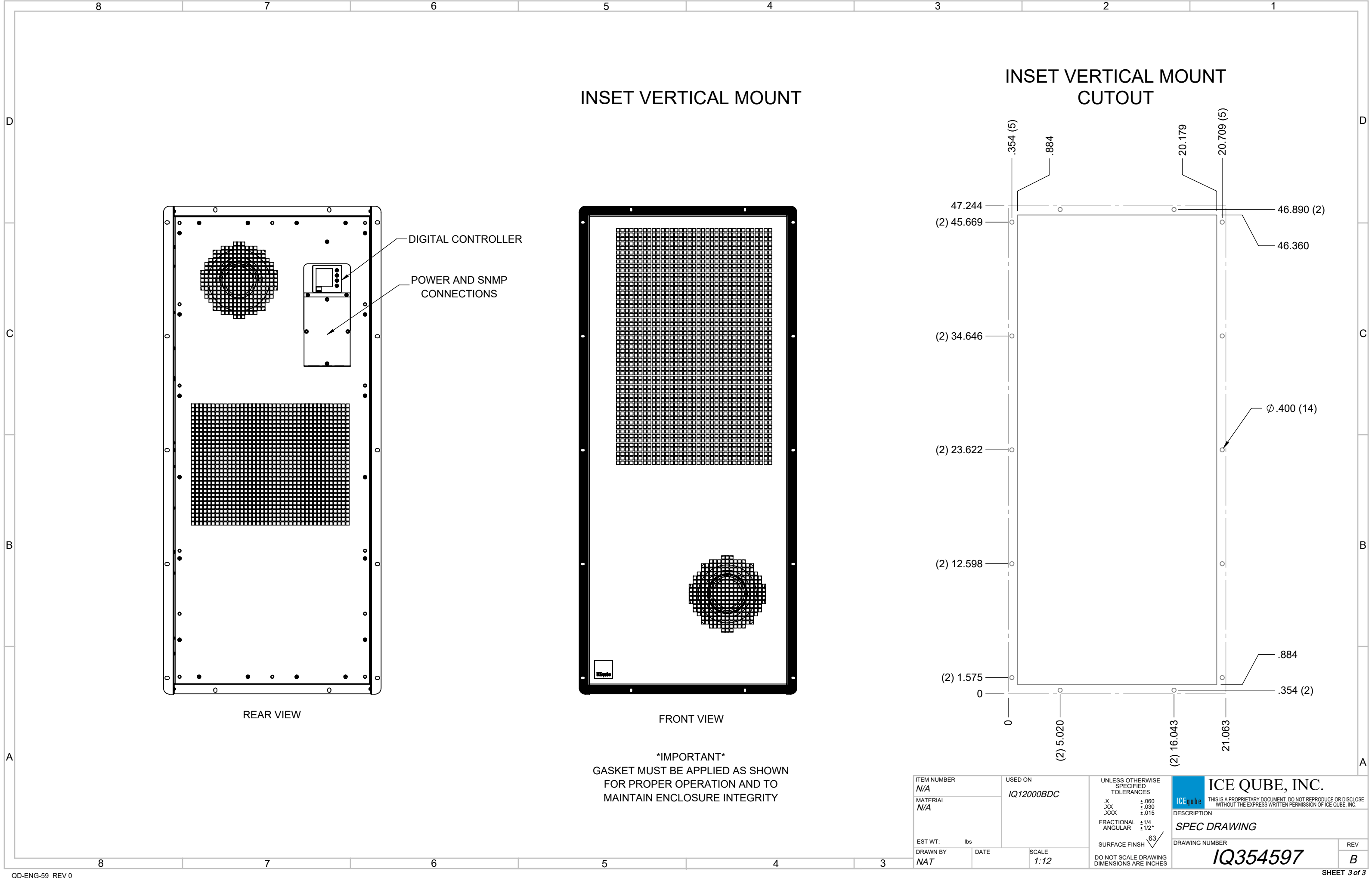


IMPORTANT
GASKET MUST BE APPLIED AS SHOWN
FOR PROPER OPERATION AND TO
MAINTAIN ENCLOSURE INTEGRITY

	2	1
--	---	---



QD-ENG-59 REV 0 SHEET 2 of 3



INSET VERTICAL MOUNT

INSET VERTICAL MOUNT
CUTOUT

REAR VIEW

FRONT VIEW

IMPORTANT
GASKET MUST BE APPLIED AS SHOWN
FOR PROPER OPERATION AND TO
MAINTAIN ENCLOSURE INTEGRITY

ITEM NUMBER <i>N/A</i>		USED ON <i>IQ12000BDC</i>		UNLESS OTHERWISE SPECIFIED TOLERANCES .X ±.060 .XX ±.030 .XXX ±.015 FRACTIONAL ±1/4 ANGULAR ±1/2°		ICE QUBE, INC. THIS IS A PROPRIETARY DOCUMENT. DO NOT REPRODUCE OR DISCLOSE WITHOUT THE EXPRESS WRITTEN PERMISSION OF ICE QUBE, INC.	
MATERIAL <i>N/A</i>		EST WT: lbs		SURFACE FINISH 63		DESCRIPTION <i>SPEC DRAWING</i>	
DRAWN BY <i>NAT</i>		DATE		SCALE <i>1:12</i>		DRAWING NUMBER <i>IQ354597</i>	
						REV <i>B</i>	